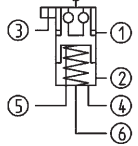


No. 6102H

„Turbine“ high-end clamping module for full automation

Hydraulic opening.
Opening operating pressure: 25-50 bar.
Retensioning operating pressure: 20 bar.
Cover and piston hardened.
Repeatability < 0.005 mm.



Order no.	Size	Pull-in/locking force up to	Holding force*	Weight
		[kN]	[kN]	[Kg]
420919	K23	23	23	4,8

Application:

For fully automatic clamping solutions for use as machine table support in processing centres with automatic pallet changing system or robot loading and for installation in pallets, machine tables, clamping brackets and cubes. Many possible versatile uses in automation.

Note:

Hardened support surfaces as island design with integrated support control. Additional blowing off of the support surfaces by centrally running-out turbine spindles and blowing out of the sphere space. Additional hydraulic 6 mm lift-out of the pallet to be changed for easier pallet removal.

Sensing options:

- Support control (pneumatic)
- Locking control (hydraulic)

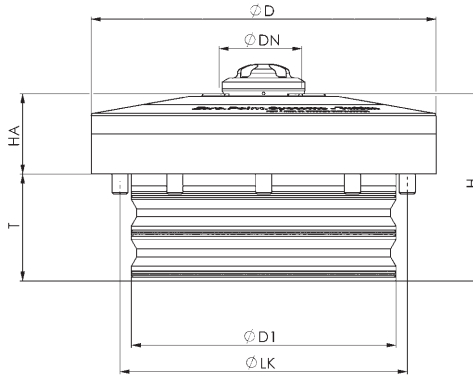
Turbine has six connections:

1x hydr. opening (1) / 1x hydr. retensioning (2) / 1x pneum. support control (3) / 1x blow-off, blow-out and pneum. turbine blow-off (4) / 1x hydr. locking control (5) / 1x run out short stroke piston (6).

* Please observe the installation instructions.

On request:

- Installation diagrams



Dimensions:

Order no.	Size	dia. D	dia. DN	dia. D1	H	HA	dia. LK	T
420919	K23	129	32	99	70	30	115	40



No. 6102ZN

Pull-stud for high-end clamping module „Turbine“

Hardened, for hydraulic high-end clamping module article no. 6102H.



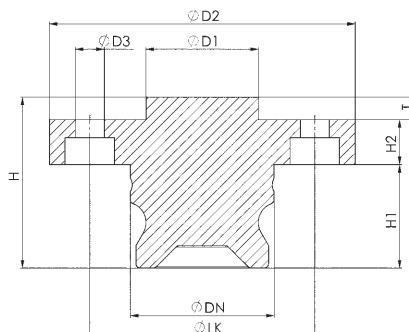
Order no.	Size	dia. DN	dia. D1	dia. D2	dia. D3	dia. LK	H	H2	H1	T	Weight [g]
426502	K23	32,0	25	68	6,4	50	38	23	10	5	370
426528	K23	32,0	25	68	6,4	50	38	23	10	5	370
426544	K23	31,8	25	68	6,4	50	38	23	10	5	370

Design:

Order no. 426502: zero point pull-stud

Order no. 426528: timing pull-stud

Order no. 426544: undersize pull-stud



Subject to technical alterations.