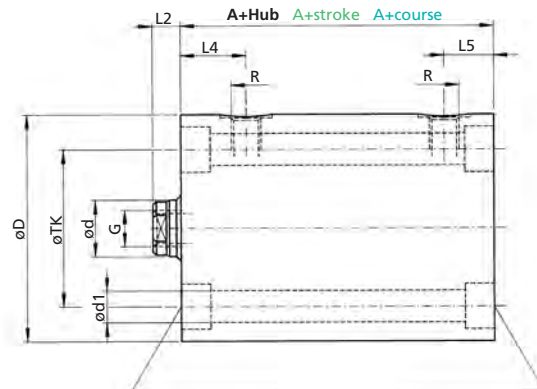
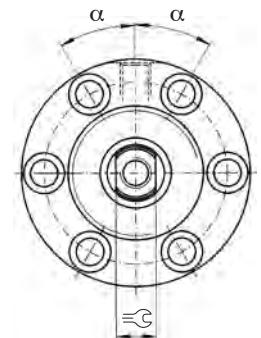




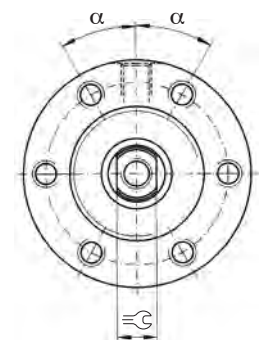
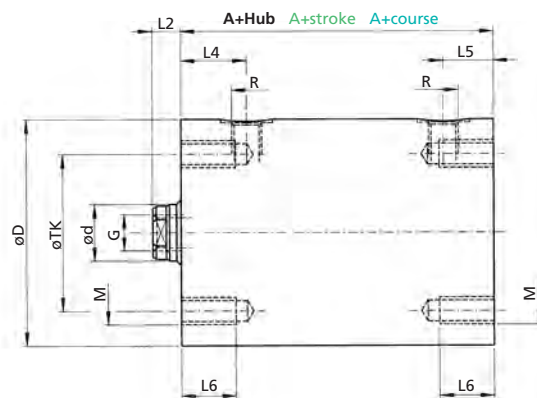
Bauform 01
 Style 01
 Forme 01



Senkung für DIN EN ISO 4762
 Counterbore for DIN EN ISO 4762
 Lamage pour DIN EN ISO 4762



Bauform 02
 Style 02
 Forme 02



Bestellbezeichnung (Beispiel)
 Order specification (example)
 Référence de commande (exemple)

RZ 500 50 / 32. 01. 201. 16

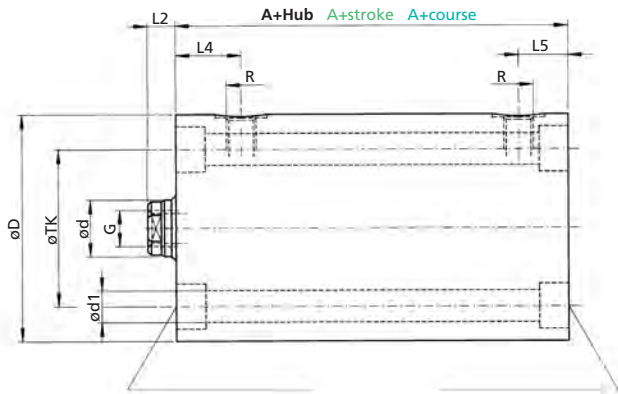
RZ 500 RZ 320

Kolben Ø Piston Ø Ø Piston	Stangen Ø (d) Rod Ø (d) Ø Tige (d)	Bauform Mounting mode Mode de fixation	Funktionsart Operation mode Mode de fonctionnement	Hub Stroke Course		Option Option Option	A	A	D	d1	L2	L4
				Min. Hub Min. stroke Course mini.	Standard Standard Standard							
16	10	01 02	201	201	RZ 500	V	50	-	60	4x6,5	6	18
20	12	01 02	201	9	≤100		52	63	60	4x6,5	7	20
25	16	01 02	201	7	≤100	E	54	70	65	6x6,5	7	20
32	20	01 02	201	8	≤100	E...NF	58	78	75	6x8,5	10	24
40	25	01 02	201	5	≤100		62	89	90	6x10,5	10	25
50	32	01 02	201	5	≤100	Z	72	97	100	6x10,5	10	30
63	40	01 02	201	7	≤100		83	112	125	6x13	14	33
80	50	01 02	201	7	≤130	Z	95	131	160	6x17	14	41
100	60	01 02	201	7	≤130		100	133	200	6x21	15	44

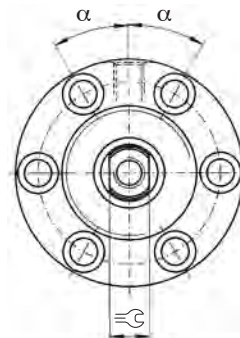
Technische Änderungen vorbehalten
 Subject to change without notice
 Sous réserve de modifications

Maße in mm
 Dimensions in mm
 Dimensions en mm

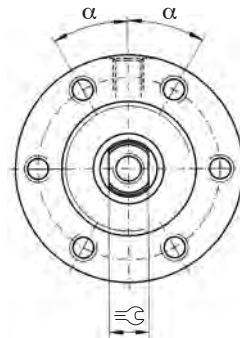
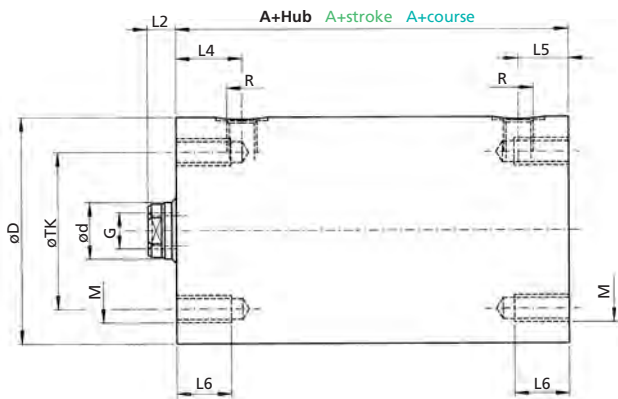
Berechnungsgrundlage siehe ahp informiert
 Calculation based on "Information from AHP"
 Base de calcul, voir « AHP vous informe »



Senkung für DIN EN ISO 4762
Counterbore for DIN EN ISO 4762
Lamage pour DIN EN ISO 4762



Bauform 01
Style 01
Forme 01



Bauform 02
Style 02
Forme 02

RZ 500 RZ 320

L5	L5	L6	M	α	R	☞	TK	G x Tiefe G x depth G x profondeur
18	-	15	4xM6	45°	G 1/4"	8	44	M6x12
18	20	15	4xM6	45°	G 1/4"	10	46	M8x12
18	20	15	6xM6	30°	G 1/4"	13	50	M10x15
19	24	18	6xM8	30°	G 1/4"	17	58	M12x15
19	25	18	6xM10	30°	G 1/4"	21	70	M16x25
19	30	20	6xM10	30°	G 1/4"	26	80	M20x30
23	33	20	6xM12	30°	G 1/2"	32	100	M27x40
25	41	25	6xM16	30°	G 1/2"	41	130	M30x40
28	44	30	6xM20	30°	G 1/2"	-	160	M42x60