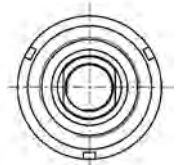
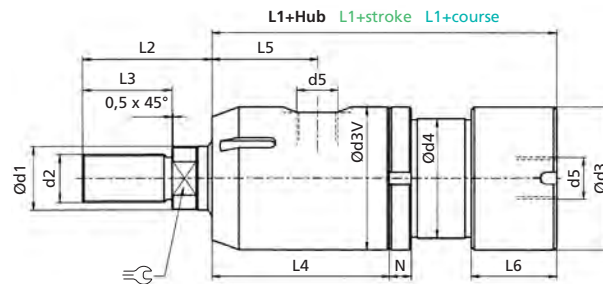


UZ 100 - 00 / 01

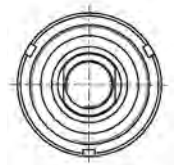
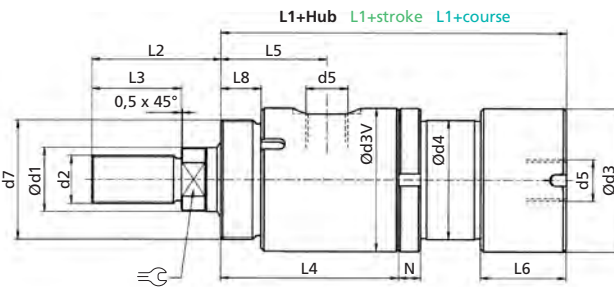
Nenndruck, statisch **Nominal pressure, static** Pression nominale, statique
100 bar (1450 PSI)



Befestigungsart 00
Mounting mode 00
Mode de fixation 00



Befestigungsart 01
Mounting mode 01
Mode de fixation 01



Bestellbezeichnung (Beispiel)
Order specification (example)
Référence de commande (exemple)

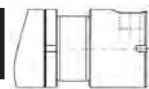
UZ 100 .32 / 16. 00. 201. 100.

M1



Innengewinde
Internal thread
Filetage intérieur

T



Anschluss seitlich
Side-mounted oil ports
Raccord latéral

Kolben Ø Piston Ø Ø Piston	Stangen Ø (d1) Rod Ø (d1) Ø Tige (d1)	Befestigungsart Mounting mode Mode de fixation			Funktionsart Operation mode Mode de fonctionnement				Hub Stroke Course	Option Option Option	d2	d3	d3V	d4	d5	d7	d12	d13	d14	
16	8	00	01	001	201	204	206	208	Nach Kundenwunsch To customer specifications À la demande du client	V	M6	28	29,5	20	G1/8"	M20x1,5	23	15	M3	
20	10	00	01	001	201	204	206	208			E	M8	32	32	25	G1/8"	G1/2"	26	18	M4
25	12	00	01	001	201	204	206	208				M10	36	36	30	G1/8"	G3/4"	30	22	M4
32	16	00	01	001	201	204	206	208		M1	M12	47	47	38	G1/4"	G1"	38	25	M5	
40	20	00	01	001	201	204	206	208			M16	58	58	48	G1/4"	G1 1/4"	45	33	M6	
50	25	00	01	001	201	204	206	208			M20x1,5	72	72	60	G1/4"	G1 1/2"	58	42	M6	
63	32	00	01	001	201	204	206	208		T	M24x1,5	85	85	75	G3/8"	G2"	65	48	M8	
80	40	00	01	001	201	204	206	208			M30x1,5	105	105	90	G1/2"	G2 1/2"	84	60	M10	
100	50	00	01	001	201	204	206	208			M36x1,5	130	130	115	G1/2"	G3"	102	72	M12	

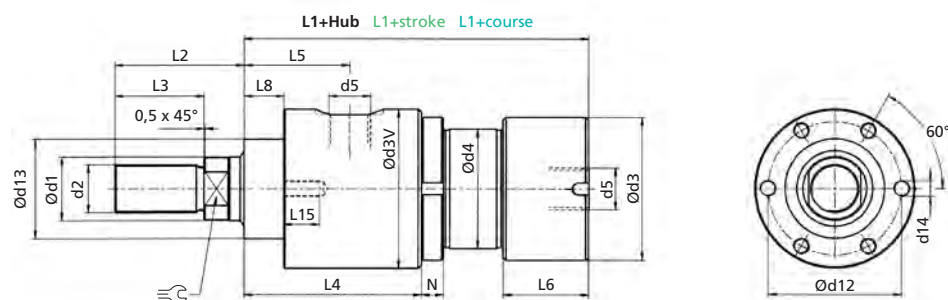
Technische Änderungen vorbehalten
Subject to change without notice
Sous réserve de modifications

Maße in mm
Dimensions in mm
Dimensions en mm

Berechnungsgrundlage siehe ahp informiert
Calculation based on "Information from AHP"
Base de calcul, voir « AHP vous informe »



Befestigungsart 001
Mounting mode 001
Mode de fixation 001



L1				L2	L3	L4	L5	L6		L8	L15	N	☰
201	204	206	208					201	204				
								206	208				
63	90	75	78	30	25	40	23	25	25	8	6	7	6
66	104	83	87	35	26	56	25	35	35	9	7	7	8
73	113	95	95	41	30	57	26,5	35	35	9	8	8	10
82	127	105	104	50	35	59	28	38	38	11	10	8	13
93	146	119,5	119,5	63	45	68	35	38	38	14	12	9	17
106	161	133,5	133,5	65	45	73	40	43	43	16	12	11	21
116	162	133	145	75	55	92	48	50	60	20	18	11	26
133	180	153	160	90	65	101	55	55	65	25	20	12	32
161	222	184	199	110	85	125	75	50	63	35	25	12	41