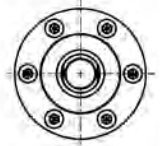
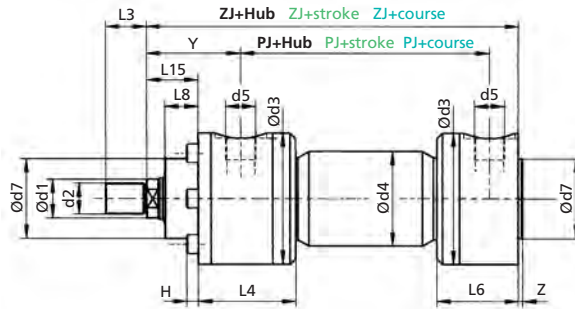
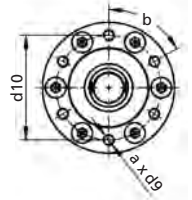
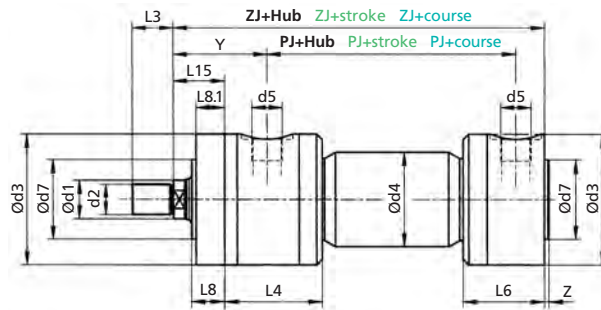




Befestigungsart 00*
Mounting mode 00*
Mode de fixation 00*



Befestigungsart 001*
Mounting mode 001*
Mode de fixation 001*



Bestellbezeichnung (Beispiel)
Order specification (example)
Référence de commande (exemple)

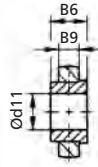
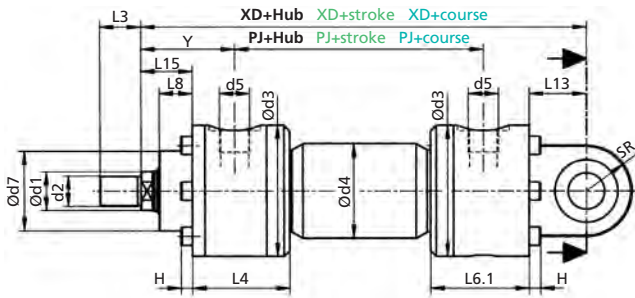
DHZ 160 .80 / 45. 00. 201. 100. AA 11. EE 44

Kolben Ø Piston Ø Ø Piston	Stangen Ø (d1) Rod Ø (d1) Ø Tige (d1)	Befestigungsart Mounting mode Mode de fixation				Funktionsart Operation mode Mode de fonctionnement				Hub Stroke Course	Anschlussposition Kopf/Boden Oil port position head / rear Position de raccordement avant / arrière	Entlüftungsarten Venting style Types de purge	Entlüftungsposition Kopf/Boden Venting position head / rear Position de purge avant / arrière	Option Option Option	a	b	B6	B9	d2
25	14 18	00	001	07	08	201	204	206	208	Nach Kundenwunsch To customer specifications A la demande du client	Siehe Anschluss- und Entlüftungspositionen Seite 6/22 See oil port and venting positions on page 6/22 Voir Positions de raccordement et de purge page 6/22	EE EM EG	V	4	90	12	7	M12x1,25 M14x1,5	
32	18 22	00	001	07	08	201	204	206	208					4	90	16	9	M14x1,5 M16x1,5	
40	22 28	00	001	07	08	201	204	206	208					4	90	20	12	M16x1,5 M20x1,5	
50	28 36	00	001	07	08	201	204	206	208					6	60	25	16	M20x1,5 M27x2	
63	36 45	00	001	07	08	201	204	206	208					6	60	32	18	M27x2 M33x2	
80	45 56	00	001	07	08	201	204	206	208					6	60	40	22	M33x2 M42x2	
100	56 70	00	001	07	08	201	204	206	208					6	60	50	28	M42x2 M48x2	
125	70 90	00	001	07	08	201	204	206	208					6	60	63	36	M48x2 M64x3	
140*	80	00	001	07	08	201	204	206	208					6	60	70	57	M56x2	
160	90 110	00	001	07	08	201	204	206	208					6	60	80	66	M64x3 M80x3	
180*	100	00	001	07	08	201	204	206	208					8	45	90	60	M72x3	
200	110 140	00	001	07	08	201	204	206	208					8	45	100	70	M80x3 M100x3	

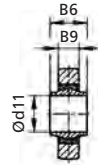
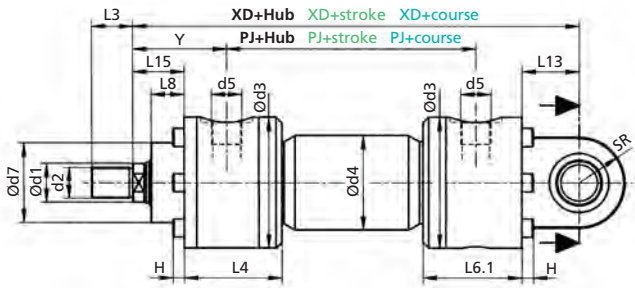
Technische Änderungen vorbehalten
Subject to change without notice
Sous réserve de modifications

Maße in mm
Dimensions in mm
Dimensions en mm

Berechnungsgrundlage siehe ahp informiert
Calculation based on "Information from AHP"
Base de calcul, voir « AHP vous informe »



Befestigungsart 07
Mounting mode 07
Mode de fixation 07
(MP3)



Befestigungsart 08
Mounting mode 08
Mode de fixation 08
(MP5)

d3	d4	d5	d7 ₈	d9	d10	d11 ^{H7}	H	L3	L4	L6	L6.1	L8	L8.1	L13	L15	PJ	SR	XD	Y	Z	ZJ
58**	35	G 1/4"	32	M6	46	12	6	16 18	67	52	58	15	12	22	28	77	16	178	58	3	150
66	45	G 3/8"	40	M8	53	16	6	18 22	72	57	68	19	16	26	32	89	20	206	64	3	170
85**	55	G 1/2"	50	M8	67	20	8	22 28	85	69	76	19	16	33	32	97	25	231	71	3	190
95	65	G 1/2"	60	M8	77	25	8	28 36	83	71	83	24	20	40	38	111	31	257	72	4	205
115	83	G 3/4"	70	M10	92	32	10	36 45	84	71	86	29	25	50	45	117	40	289	82	4	224
132**	100	G 3/4"	85	M12	108	40	12	45 56	113	101	111	36	32	72	54	134	50	332	91	4	250
158	125	G 1"	106	M14	132	50	14	56 63	138	117	132	37	32	80	57	162	63	395	108	5	300
194**	160	G 1 1/4"	132	M16	162	63	16	63 85	157	126	139	37	32	90	60	174	71	428	121	5	325
206	170	G 1 1/4"	145	M16	175	70	16	75	170	140	155	40	35	110	65	195	85	485	130	5	360
238	190	G 1 1/4"	160	M20	200	80	20	85 95	190	149	169	41	36	115	66	191	90	505	143	5	370
268	210	G 1 1/4"	185	-	-	90	20	90	205	161	-	45	40	135	75	224	100	580	160	5	425
294**	244	G 1 1/4"	200	-	-	100	20	95 112	195	136	-	45	40	135	75	224	112	615	190	5	450

* Nicht genormte Zwischengröße / Befestigungsart
* Non standard piston-Ø / mounting option
* Diametre piston / mode de fixation pas normalisé

** Abweichend zu DIN 6020/1
** Deviates to DIN 6020/1
** Divergence par rapport à DIN 6020/1