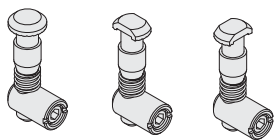


30 中心孔 10 系列铝型材 - 连接件

锚式连接销

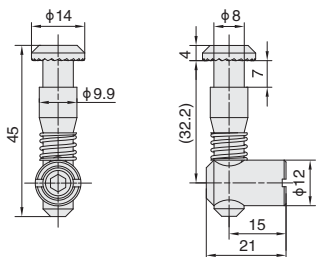
■ 锚式连接销



库存

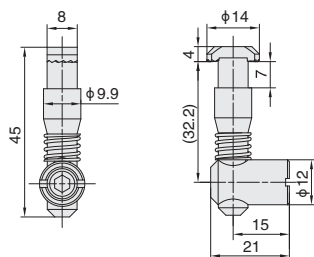
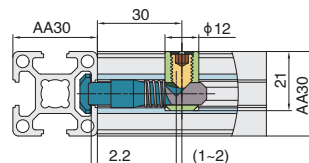
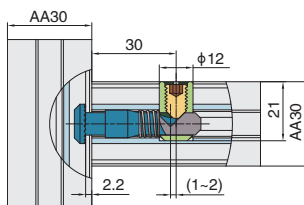
材质	表面处理
碳钢	镀锌

● 具有连接和锁紧功能，隐蔽性好，保证连接处没有缝隙，连接时只占用一个 T 型槽，方便安装板材和其他部件。



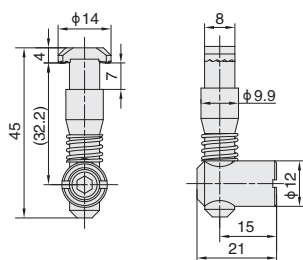
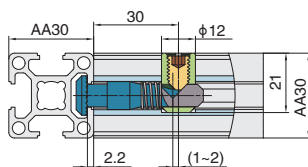
CA-30-01

ex.
安装示例



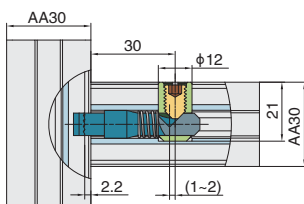
CA-30-02

ex.
安装示例



CA-30-03

ex.
安装示例



04
30 系列
中心孔 10

代号	材质	参考重量 (g)
CA-30-01	碳钢镀锌	22.6
CA-30-02		31.6
CA-30-03		31