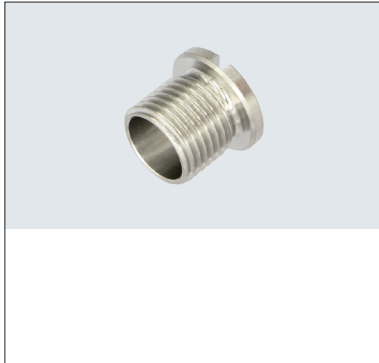


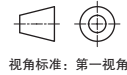
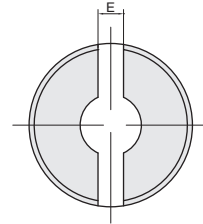
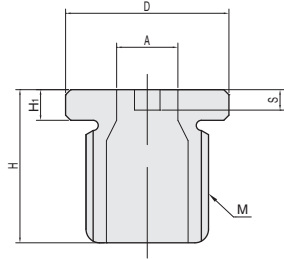
# 锁紧销

F4  
弹簧柱塞

## ■ 锁紧套



①代号	M材质	
LPVG	钢	镀镍
LPVX	不锈钢	-



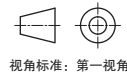
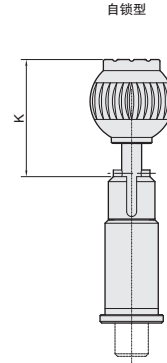
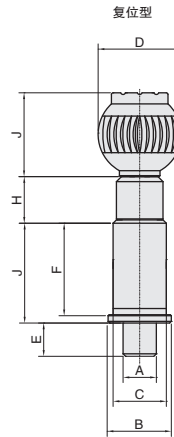
①代号	-	②A
LPVG	-	A6

①代号	②A+0.023 +0.012	M	适用板厚度B	D	H	e	s
LPVG LPVX	6	M12×1.5	6以上	16	15	2.5	2
	10	M16×1.5		20	17		

## ■ 球形旋钮型



①代号		旋钮	主体			销		弹簧
复位型	自锁型	M材质	M材质	S处理	M材质	S处理	M材质	
LPVJ	LPVY	铝合金	碳钢	发黑	碳钢	发黑	不锈钢	



①代号	-	②A
LPVJ	-	A10

①代号	②A	公差	B	C	D	E(min)	F	G	H	J	K
LPVJ LPVY	10		19	16	+0.023 +0.012	25	2.5	31		25	36.5
	12		23	20		32		35		33	44.5
	16	-0.005 -0.01	28	25	+0.028 +0.015	40	10	42	13	41.5	53
	20		33	30			3.0	50		41.5	53
	25		42	38	+0.033 +0.017	50		60		51	62.5