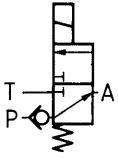


No. 6910-06-04

Seat Valve, 3/2-Way

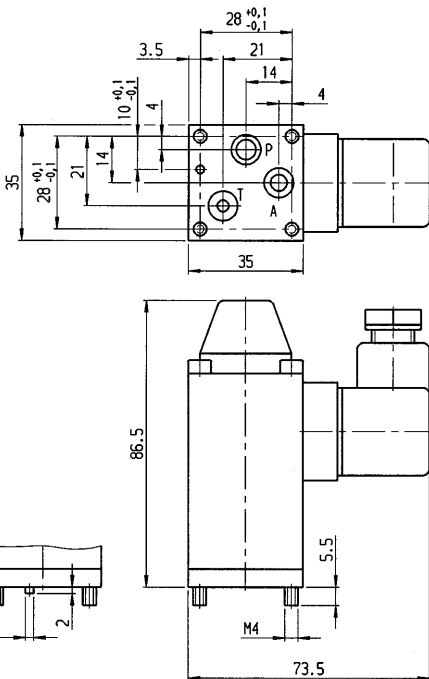
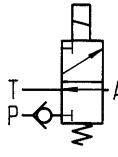
for O-ring joint,
max. operating pressure 450 bar,
min. operating pressure 10 bar.



No. 6910-06-05

Seat Valve, 3/2-Way

for O-ring joint,
max. operating pressure 450 bar,
min. operating pressure 10 bar.



Dimensions apply on both sides.



CAD



CAD

Order no.	Article no.	NG	Q [l/min]	Viscosity [cSt]	Weight [g]
276824	6910-06-04	4	8	10-200	600

Order no.	Article no.	Ambient temp. [°C]	U [V DC]	P [W]	Switching time on/off [ms]	Ed to 40°C [%]	Switching frequency per hour	Ingress protection
276824	6910-06-04	-40 - +80	24	24	70/50	100	2000	IP 65

Order no.	Article no.	NG	Q [l/min]	Viscosity [cSt]	Weight [g]
65391	6910-06-05	4	8	10-200	600

Order no.	Article no.	Ambient temp. [°C]	U [V DC]	P [W]	Switching time on/off [ms]	Ed to 40°C [%]	Switching frequency per hour	Ingress protection
65391	6910-06-05	-40 - +80	24	24	70/50	100	2000	IP 65

Design:

The ball, being the essential control element, is pressed either by a magnet or a spring onto the hardened ball seats. The blocked flow direction is thus hermetically shut off. The magnets work with or without a shift lever and are designed and checked to VDE 0580. The seat valve has a manual emergency actuator. A check valve is incorporated in channel P.

Application:

The 3/2-way seat valve is used to determine the direction of oil flow. These valves are mainly used for direct control of single-acting cylinders.

Features:

Hermetic sealing by ball seats. Sealing of the oil channels of the valve base with O-rings. The seat valve has completely hydraulic pressure compensation and negative switching.

Note:

The direction of flow must be the direction of the arrow according to the symbol. The position of installation is optional. Hydraulic oil HLP or HLPD according DIN 51524 part 2.

On request:

Directional seat valve with control voltage 230 V AC 50/60 Hz.

Diagram:

