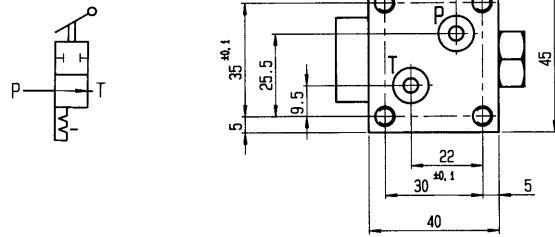


No. 6910-10

Manual Seat Valve, 2/2-Way

for O-ring joint,
max. operating pressure 500 bar,
min. operating pressure 10 bar.



Order no.	Article no.	Q [l/min]	Viscosity [cSt]	Ambient temp. [°C]	Switching torque [N cm]	Switching stroke [mm]	Switching angle	Weight [g]
181214	6910-10	12	10-500	-40 - +80	63	3,5	90°	400

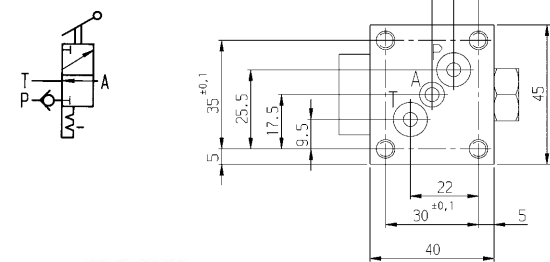
Application:

By means of the 2/2 manual way seat valve an oil channel can be closed or opened.

No. 6910-11

Manual Seat Valve, 3/2-Way

for O-ring joint,
max. operating pressure 500 bar,
min. operating pressure 10 bar.



Order no.	Article no.	Q [l/min]	Viscosity [cSt]	Ambient temp. [°C]	Switching torque [N cm]	Switching stroke [mm]	Switching angle	Weight [g]
114298	6910-11	12	10-500	-40 - +80	63	3,5	90°	400

Application:

The 3/2 manual way seat valve allows to determine the direction of oil flow.

Features:

Hermetic sealing by ball seats. Sealing of the oil channels of the valve base with O-rings. The seat valve has completely hydraulic pressure compensation and negative switching.

Note:

The direction of flow has to be the direction of the arrow according to the symbol. The position of installation is optional. Hydraulic oil HLP or HLPD according to DIN 51524 Part 2.

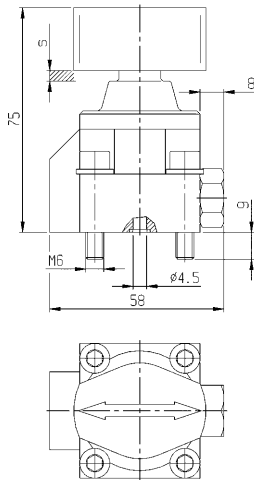
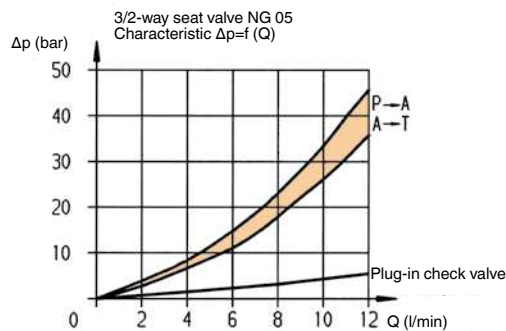


Diagram:



No. 6910A-05

Connection Plate



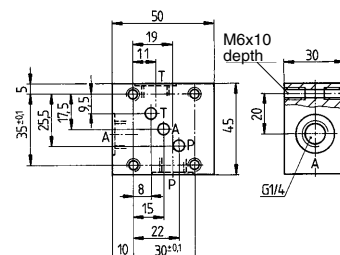
Order no.	Article no.	L x W x H	Connection	Weight [g]
60335	6910A-05	50x45x30	3 x G1/4	450

Design:

Tempering steel, TEM deburred and phosphatized.

Application:

For pipe connection in combination with
- 3/2-way seat valve no. 6910-06-01
- 2/2-way manual seat valve no. 6910-10
- 3/2-way manual seat valve no. 6910-11.



Subject to technical alterations.

