

No. 6917-1

Pressure Reducing Valve

for O-ring connection,
max. operating pressure 400 bar,
min. operating pressure 40 bar.



Order no.	Article no.	NG	Input pressure at P max. [bar]	Adjust. pressure at A min. [bar]	Adjust. pressure at A max. [bar]	Q [l/min]	OR-1 O-ring Order No.	Weight [g]
69179	6917-1	6	400	20	370	5	161810	1085

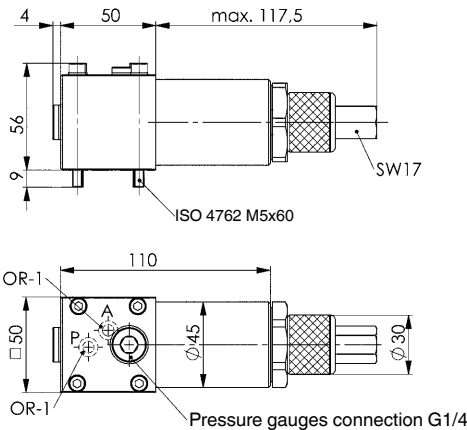
Design:

Cylinder body made of steel, phosphatized. Remaining parts made of tempering steel. Valve seat and piston are hardened and ground. This valve is leak free.

Application:

The stop valve shuts the flow from P to A when the pressure set A is reached. It opens when the pressure at A falls below the set value (e.g. through leakage).

1. Single-circuit system: The pressure reducing valve is used in a hydraulic circuit, where part of the cylinders are only to receive a reduced pressure (e.g. to prevent distortion of the workpieces or for positioning).
2. Dual-circuit system: If two working circuits are to be operated with different pressures from a single pump unit, the pressure of one circuit must be reduced by inserting a pressure reducing valve.



See hole pattern below!



No. 6917A-1

Connecting Plate

for pressure reducing valve.



Order no.	Article no.	L x W x H	Connection	Weight [g]
69211	6917A-1	50 x 50 x 25	G1/4	450

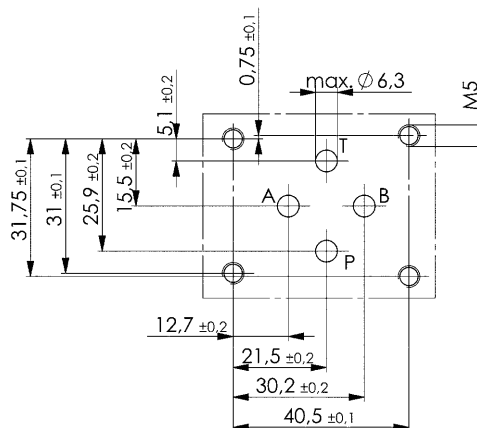
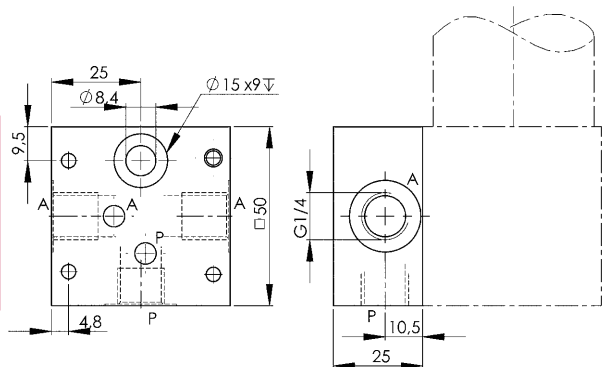
Design:

Tempering steel, phosphatized.

Application:

For pipe connection of pressure reducing valve No. 6917-1.

Hole pattern shape A nominal size 6 according to DIN 24340 T2:



Subject to technical alterations.