

## No. 6945-15-10

### Clamping Piston, complete

for stud clamping,  
max. operating pressure 400 bar.



Order no.	Article no.	Screw (6 items)	Md max. [Nm]	OR-1 O-ring Order No.	Weight [g]
61382	6945-15-10	M10 x 25	50	188300	1700

#### Design:

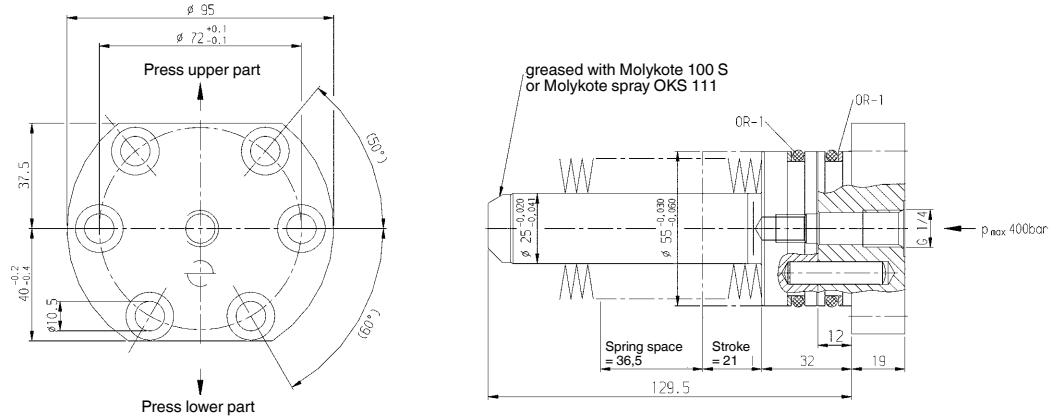
Hydraulic piston from hot workable steel, tempered and ground. Cover from hardened steel. Complete with disc springs, O-rings, support rings, dowel pin and fastening screws ISO 4762 resistance 8.8.

#### Application:

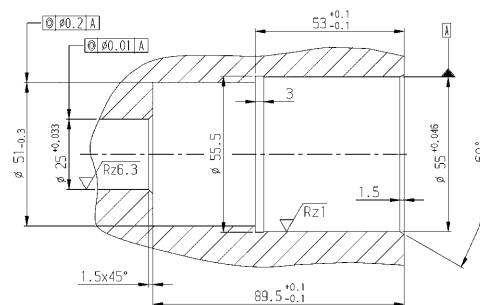
This clamping piston can be retrofitted to your original ram plate.

#### Note:

The use of clamping stud No. 6945-02-04-009 in combination with clamping piston set No. 6945-15-10 is restricted to a maximum operating pressure of 230 bar.



#### Installation dimensions:



CAD



## No. 6945-02-04

### Clamping Stud



Order no.	Article no.	dia. A	dia. D	M	Weight [g]
61671	6945-02-04-009	22	40	M24x1,5	760
61150	6945-02-04	32	50	M30x2,0	945

#### Design:

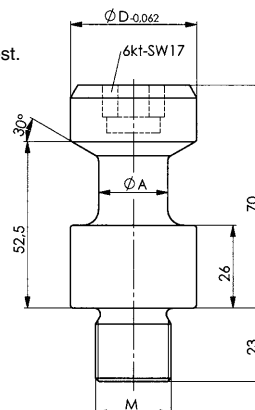
Tempering steel, tempered, inductively hardened clamping area.

#### Note:

Clamping stud does not conform to DIN, suitable only for use with our hydraulic stud clamping.

#### On request:

Special sizes available on request.



Subject to technical alterations.

CAD

