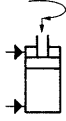


No. 6952EP

Swing clamp, cartridge flange, precision design

double acting,
max. operating pressure 350 bar,
min. operating pressure 40 bar.



Order no.	Article no.	Clamping force at 350 bar Sp* [kN]	Vol. Sp [cm ³]	Vol. Lo [cm ³]	eff. piston area Sp [cm ²]	eff. piston area Lo [cm ²]	Md max. [Nm]	Clamping stroke M [mm]	Total stroke N [mm]	Q max. * [l/min]	Weight [g]
554491	6952EP-02-21	2	0,92	2,46	0,63	1,7	100	6	14,5	0,165	370
554492	6952EP-02-22	2	0,92	2,46	0,63	1,7	100	6	14,5	0,165	370

Cl = clamping, Uncl = unclamp

* Specifications with clamping arm, standard

Design:

Cylinder barrel from steel, hardened and burnished. Piston rod case hardened and chrome plated. Piston rod with internal thread. Wiper at piston rod. Supply scope does not include clamping arm. Oil supply via oil channel in fixture body.

Application:

The swing clamp is used particularly in fixtures in which the workpieces must be freely accessible and placed from above. Workpieces with dedicated shapes can also be clamped using special clamp arms (available on request).

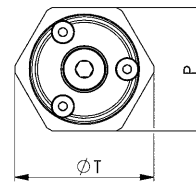
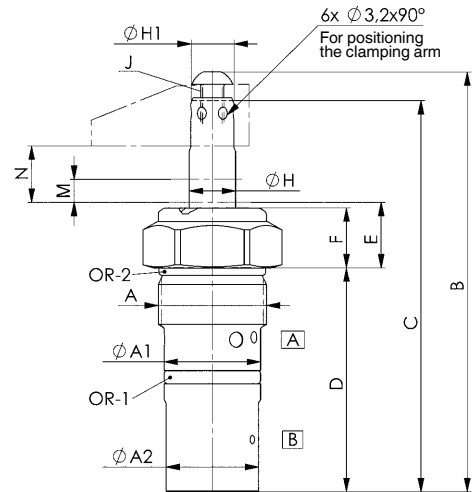
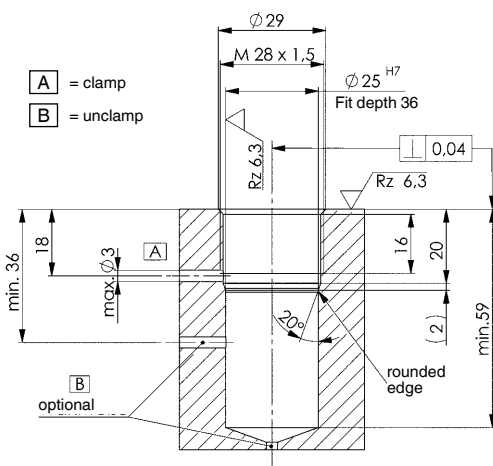
Features:

The swing motion is executed via three ball guides, thereby increasing positioning accuracy, repeat accuracy and service life.

Note:

The piston stroke is executed with spheres, so volume flow Q max. must be complied with. Clamping arm length and clamping arm weight must be strictly observed. No force may be applied to the piston when mounting accessories to it. When placing into operation, ensure that all air is bled from the system.

Installation dimensions:



Dimensions:

Order no.	Article no.	A	dia. A1	dia. A2	B	C	D	E	F	dia. H	dia. H1	J	P	dia. T	OR-1 O-ring Order No.	OR-2 O-ring Order No.
554491	6952EP-02-21	M28x1,5	25 f7	24	108,5	101,5	58	17	15,5	12	11,13	M6	SW32	36	409664	321166
554492	6952EP-02-22	M28x1,5	25 f7	24	108,5	101,5	58	17	15,5	12	11,13	M6	SW32	36	409664	321166

Subject to technical alterations.