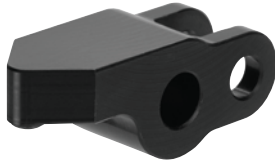


## No. 6958C-XX-04

### Clamping arm

**NEW!**



CAD

Order no.	Article no.	B	C	G°	K	L	N	P	R	R1	Weight [g]
556980	6958C-03-04	12	35	80	9	44,5	9,5	15	3	5	42
556981	6958C-04-04	15	40	80	10	50,5	10,5	18	3	5	64
556982	6958C-07-04	18	45	80	11	56,5	11,5	20	3	5	83
556983	6958C-10-04	21	50	80	12	62,0	12,5	20	3	5	103

#### Design:

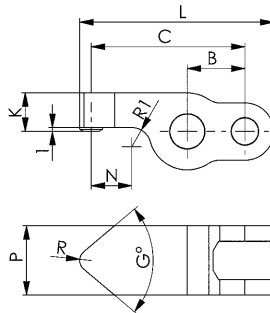
Hardened, tempered and burnished steel.

#### Application:

For vertical clamps 6958C and 6943C.

#### Note:

Clamping pressure, leverage, flow volume and clamp arm weight must always be observed.



## No. 6958CR-XX-04

### Clamping arm, blank

**NEW!**



CAD

Order no.	Article no.	B	C	G	J	L	P	Weight [g]
556984	6958CR-03-04	12	50	18	9	56,5	15	92
556985	6958CR-04-04	15	60	20	10	67,5	18	147
556986	6958CR-07-04	18	49	22	11	75,5	20	195
556987	6958CR-10-04	21	54	24	12	84,0	20	238

#### Design:

Hardened, tempered and burnished steel.

#### Application:

For vertical clamps 6958C and 6943C.

#### Note:

Clamping pressure, leverage, flow volume and clamp arm weight must always be observed.

