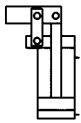


No. 6958DT

Vertical Clamp

Double-acting,
max. working pressure 250 bar,
min. operating pressure 25 bar.



Order no.	Article no.	Clamping force F1 at 100 bar [kN]	Clamping force F1 at 250 bar [kN]	Piston force F5 at 100 bar [kN]	Piston force F5 at 250 bar [kN]	Vol. Sp [cm ³]	Vol. Lo [cm ³]	eff. piston area Sp [cm ²]	eff. piston area Lo [cm ²]	Md max. [Nm]	Weight [g]
553427	6958DT-12	0,7	1,8	1,1	2,8	0,9	0,5	1,1	0,6	2,7	175
326231	6958DT-16	1,3	3,3	2,0	5,0	2,0	1,2	2,0	1,2	7,5	365
326298	6958DT-20	2,1	5,2	3,1	7,8	3,8	2,4	3,1	2,0	15,0	386
326397	6958DT-25	3,2	8,2	4,9	12,2	6,9	4,1	4,9	2,9	27,0	1015
327510	6958DT-32	5,3	13,4	8,0	20,1	13,7	8,3	8,0	4,9	47,0	1970

Sp = clamp, Lo = unclamp

Design:

Hydraulic cylinder as a drop-in cartridge. Top mounting with four cylinder screws (resistance min. 10.9); these are supplied as standard. All components are made from hardened, tempered and burnished steel. Piston and pivot bolts are made from tempered steel, hardened and nitrided. Metal wiper to protect the dirt wiper is integrated into the housing. Compressed air nozzle for pneumatic clamping control. Pivot bolts, tensioning straps and compressed air nozzle are supplied as standard, but not clamping arms. Oil supply via oil channel in fixture body.

Application:

The double-acting vertical clamp is highly suited to clamping in clamping pockets. For clearly defined return movements.

Features:

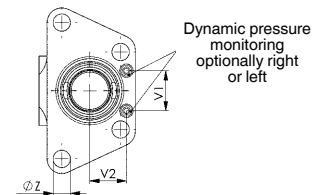
Small dimensions. Allows close side-by-side positioning. Clamping levers easy to change with built-in vertical clamp. The horizontal centre axis at the clamping lever and the pressure point on the workpiece lie in one plane. This prevents relative movement on the workpiece. To protect the O-rings sitting radially on the clamp, the cross channels at the installation hole must be rotated freely and equipped with insertion lead-ins. If the vertical clamp is closed, the compressed air that previously streamed out freely is blocked in the compressed air nozzle. The resulting back pressure can be used for clamping control with the help of a signal converter.

Note:

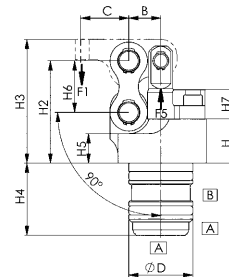
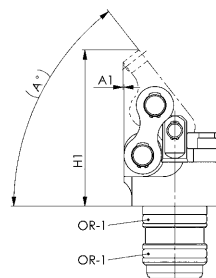
The signal converter is not included in the supply scope.

The lever ratio B to C is 1 to 1.5 for the standard levers!

In preparing the blank levers, deviations that cause a higher clamping force are permitted only in exceptional cases.

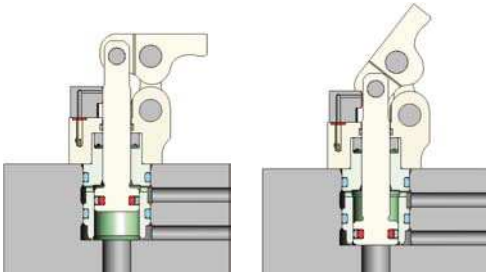


Dynamic pressure monitoring optionally right or left



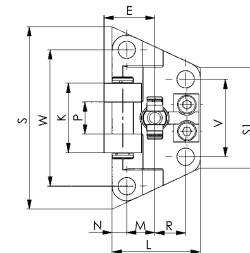
A = clamp
B = unclamp

Dynamic pressure monitoring:



closed: clamped

open: unclamped



Dimensions:

Order no.	Article no.	A	A1	B	C	E	dia. D	H	H1	H2	H3	H4	H5	H6	H7	K	L	M	N	P	R	S	S1	V	V1	V2	W	ØZ	OR-1 O-ring Order No.
553427	6958DT-12	49,5	0,13	10	15,0	17,0	18	13,5	47,7	31,0	38,0	22,0	7	16,0	12,2	20	28,5	10,0	4,5	10	8,5	50,1	23,55	20	7	11,4	36	4,5	409953
326231	6958DT-16	51,9	0,40	12	18,0	19,0	24	16,5	58,4	38,3	46,3	27,0	11	19,3	11	26	33	10,5	5,5	12	11,5	68,3	37,49	29	15	13,7	51	6,5	497461
326298	6958DT-20	54,0	1,25	14	21,0	23,0	30	20,3	73,2	49,0	59,0	34,0	14	25,0	16	32	40	13,0	6,0	16	14,0	78,9	41,60	33	15	17,5	59	8,5	490342
326397	6958DT-25	51,2	0,70	17	25,5	27,5	35	21,0	79,4	51,0	62,0	37,0	12	27,0	16	39	51	16,0	8,0	20	19,0	96,1	48,55	39	15	21,0	71	10,5	321018
327510	6958DT-32	53,4	-1,0	20	30,0	33,0	42	24,0	97,1	63,0	76,0	59,5	13	35,0	18	50	58	18,0	9,0	26	22,0	112,25	58,16	48	15	24,0	84	12,5	409748

Subject to technical alterations.