

No. 6958S-16

Clamping arm out of steel



| Order no. | Article no. | X | X1* | Clamping force at 100 bar [kN] | Clamping force at 250 bar [kN] | Clamping force at 350 bar [kN] | Weight [g] |
|-----------|------------------|----|-----|--------------------------------|--------------------------------|--------------------------------|------------|
| 320218 | 6958S-16-00-01 | 12 | 12 | 2,0 | 5,0 | 7,0 | 52 |
| 320234 | 6958S-16-00-02 | 18 | 12 | 1,3 | 3,3 | 4,6 | 60 |
| 320259 | 6958S-16-00-03 | 24 | 12 | 1,0 | 2,5 | 3,5 | 66 |
| 320275 | 6958S-16-00-04 | 30 | 12 | 0,8 | 2,0 | 2,8 | 72 |
| 322438 | 6958S-16-00-05** | - | 12 | - | - | - | 74 |

* X1 = level length at 90°

**Clamp arm blank, unhardened

Design:

Case-hardening steel, case-hardened.

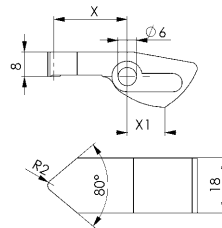
Application:

For vertical clamp 6958SU-16 and 6958ST-16.

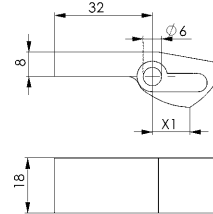
Note:

Clamping pressure, leverage, flow volume and clamp arm weight must always be observed.

Clamping arm

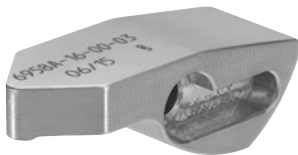


Clamping arm blank



No. 6958A-16

Clamping arm out of aluminium



| Order no. | Article no. | X | X1* | Clamping force at 100 bar [kN] | Weight [g] |
|-----------|------------------|----|-----|--------------------------------|------------|
| 320242 | 6958A-16-00-02 | 18 | 12 | 1,3 | 21 |
| 320267 | 6958A-16-00-03 | 24 | 12 | 1,0 | 23 |
| 320283 | 6958A-16-00-04 | 30 | 12 | 0,8 | 25 |
| 322453 | 6958A-16-00-05** | - | 12 | - | 26 |

* X1 = level length at 90°

** Clamp arm blank

Design:

Aluminium.

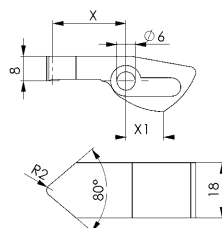
Application:

For vertical clamp 6958SU-16 and 6958ST-16.

Note:

Clamping pressure, leverage, flow volume and clamp arm weight must always be observed. Max. operating pressure 100 bar.

Clamping arm



Clamping arm blank

