

No. 6974

Centring clamp MINI with three clamping points

Double-acting,
max. operating pressure 350 bar,
min. operating pressure 10 bar.



CAD

| Order no. | Article no. | Clamping force at 100 bar* [kN] | Clamping force at 350 bar* [kN] | Clamping points | Clamping Ø N -1 | Stroke H [mm] | Repeatability [mm] | Q max. [l/min] | Weight [g] |
|-----------|-------------|---------------------------------|---------------------------------|-----------------|-----------------|---------------|--------------------|----------------|------------|
| 329268 | 6974-3025 | 4,0 | 14,0 | 3 | 25-29 | 3,0 | ±0,02 | 1,0 | 441 |
| 329300 | 6974-3028 | 4,0 | 14,0 | 3 | 28-32 | 3,0 | ±0,02 | 1,0 | 449 |
| 329342 | 6974-3032 | 4,0 | 14,0 | 3 | 32-36 | 3,0 | ±0,02 | 1,0 | 460 |
| 329078 | 6974-3036 | 4,0 | 14,0 | 3 | 36-40 | 3,0 | ±0,02 | 1,0 | 575 |
| 329110 | 6974-3039 | 4,0 | 14,0 | 3 | 39-43 | 3,0 | ±0,02 | 1,0 | 591 |
| 329151 | 6974-3042 | 4,0 | 14,0 | 3 | 42-46 | 3,0 | ±0,02 | 1,0 | 607 |
| 329185 | 6974-3045 | 4,0 | 14,0 | 3 | 45-49 | 3,0 | ±0,02 | 1,0 | 624 |
| 329193 | 6974-3048 | 4,0 | 14,0 | 3 | 48-52 | 3,0 | ±0,02 | 1,0 | 641 |
| 329227 | 6974-3051 | 4,0 | 14,0 | 3 | 51-55 | 3,0 | ±0,02 | 1,0 | 660 |

* The clamping force is distributed centrally over the 3 clamping points.

Design:

Double-acting centring clamp with three clamping points.
All components from high-grade hardened and nitrided steel. Oil supply via oil channel in fixture body.

Application:

For centring and clamping workpieces with machined or cast holes, cutouts or penetrations.
Element screwed directly onto the fixture body, sealed with O-ring.

Features:

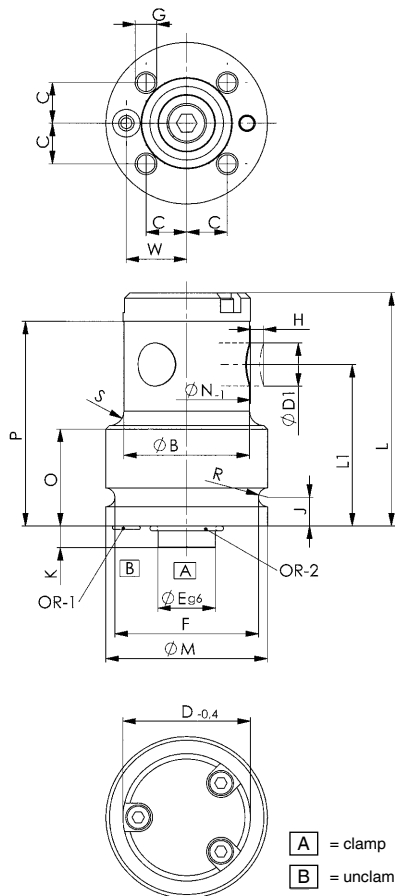
If the centring clamp is fastened from below, oil is supplied through conduits drilled in the fixture body.
If the centring clamp is fastened from above and oil supplied through conduits drilled in the fixture body, a connection plate for O-ring connection is needed.
If the centring clamp is fastened from above and oil supplied through pipes, a connection plate for pipe connection is needed.

Note:

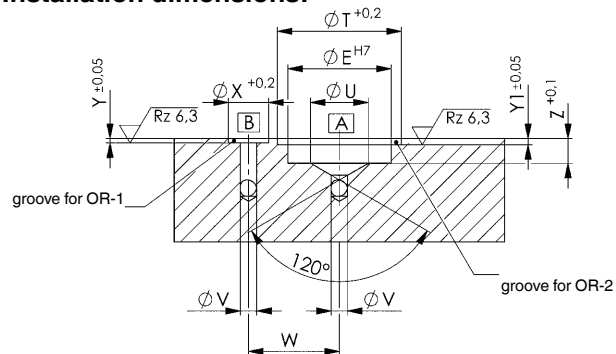
The practical combination of 2-point and 3-point elements can avoid over-determined clamping states. Unsuitable for use on lathes.

On request:

Other sizes available on request.



Installation dimensions:



Dimensions:

| Order no. | Article no. | dia. B | C | dia. D -0,4 | Bolt Ø D1 [mm] | dia. E g6/h7 | F | G | J | K | L | L1 | dia. O | P | R | S | dia. T | dia. U | dia. V | W | dia. X | Y | Y1 | Z | OR-1 O-ring Order No. | OR-2 O-ring Order No. | |
|-----------|-------------|--------|------|-------------|----------------|--------------|----|-------|---|---|------|----|--------|----|------|-----|--------|--------|--------|---|--------|-----|-----|-----|-----------------------|-----------------------|--------|
| 329268 | 6974-3025 | 24 | 11,3 | 24,5 | 12 | 16 | 40 | M6x12 | 8 | 6 | 66,5 | 45 | 45 | 27 | 62,5 | 2,6 | 4,0 | 20,5 | 8 | 3 | 16,8 | 7,7 | 1,1 | 1,3 | 6 | 409508 | 537985 |
| 329300 | 6974-3028 | 24 | 11,3 | 27,5 | 12 | 16 | 40 | M6x12 | 8 | 6 | 66,5 | 45 | 45 | 27 | 62,5 | 2,6 | 4,0 | 20,5 | 8 | 3 | 16,8 | 7,7 | 1,1 | 1,3 | 6 | 409508 | 537985 |
| 329342 | 6974-3032 | 24 | 11,3 | 31,5 | 12 | 16 | 40 | M6x12 | 8 | 6 | 66,5 | 45 | 45 | 27 | 62,5 | 2,6 | 4,0 | 20,5 | 8 | 3 | 16,8 | 7,7 | 1,1 | 1,3 | 6 | 409508 | 537985 |
| 329078 | 6974-3036 | 35 | 11,3 | 35,5 | 12 | 16 | 40 | M6x12 | 8 | 6 | 65,0 | 45 | 45 | 27 | 57,0 | 2,6 | 4,0 | 20,5 | 8 | 3 | 16,8 | 7,7 | 1,1 | 1,3 | 6 | 409508 | 537985 |
| 329110 | 6974-3039 | 35 | 11,3 | 38,5 | 12 | 16 | 40 | M6x12 | 8 | 6 | 65,0 | 45 | 45 | 27 | 57,0 | 2,6 | 4,0 | 20,5 | 8 | 3 | 16,8 | 7,7 | 1,1 | 1,3 | 6 | 409508 | 537985 |
| 329151 | 6974-3042 | 35 | 11,3 | 41,5 | 12 | 16 | 40 | M6x12 | 8 | 6 | 65,0 | 45 | 45 | 27 | 57,0 | 2,6 | 4,0 | 20,5 | 8 | 3 | 16,8 | 7,7 | 1,1 | 1,3 | 6 | 409508 | 537985 |
| 329185 | 6974-3045 | 35 | 11,3 | 44,5 | 12 | 16 | 40 | M6x12 | 8 | 6 | 65,0 | 45 | 45 | 27 | 57,0 | 2,6 | 4,0 | 20,5 | 8 | 3 | 16,8 | 7,7 | 1,1 | 1,3 | 6 | 409508 | 537985 |
| 329193 | 6974-3048 | 35 | 11,3 | 47,5 | 12 | 16 | 40 | M6x12 | 8 | 6 | 65,0 | 45 | 45 | 27 | 57,0 | 2,6 | 4,0 | 20,5 | 8 | 3 | 16,8 | 7,7 | 1,1 | 1,3 | 6 | 409508 | 537985 |
| 329227 | 6974-3051 | 35 | 11,3 | 50,5 | 12 | 16 | 40 | M6x12 | 8 | 6 | 65,0 | 45 | 45 | 27 | 57,0 | 2,6 | 4,0 | 20,5 | 8 | 3 | 16,8 | 7,7 | 1,1 | 1,3 | 6 | 409508 | 537985 |

Subject to technical alterations.