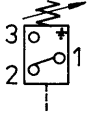


No. 6982

Piston Pressure Switch

electric-hydraulic



Order no.	Article no.	Operating pressure [bar]	Temp. [°C]	Ingress protection	Switching frequency [1/min]	Voltage	OR-1 O-ring Order No.	Weight [g]
176040	6982-04	10-100	-20 - +80	IP65	100	30V - 250V = 5A	457499	330
176214	6982-02	40-450	-20 - +80	IP 65	100	30V - 250V = 5A	457499	330

Design:

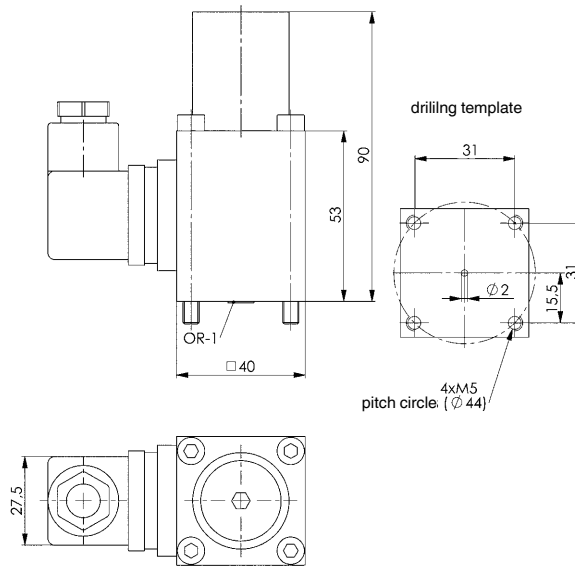
Microswitch. Design: Spring-loaded piston.

Application:

For electric-hydraulic pressure monitoring of a clamping circuit. The piston pressure switch can be mounted onto an adapter plate for tube connection.

Note:

Any built in position possible.



CAD



No. 6982-02-01

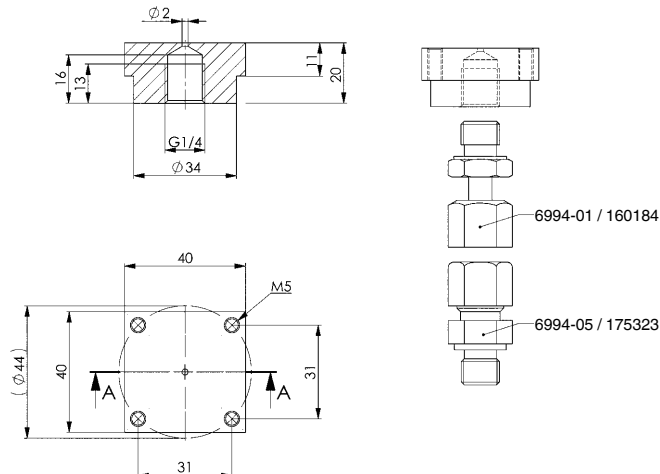
Connection Plate



Order no.	Article no.	Weight [g]
60780	6982-02-01	185

Application:

For connecting pressure switch 6982-02 and 6982-04.



CAD



Subject to technical alterations.