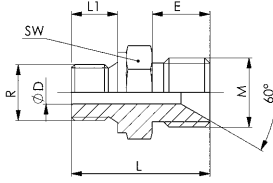


No. 6993

Screw-in nipple

Zinc-plated.



CAD

Order no.	Article no.	R	L	L1	E	M	dia. D	SW	max. operating pressure [bar]	Weight [g]
69302	6993-M12x1,5-G1/8	G1/8	24	8	10	M12 x 1,5	4	14	400	15
69328	6993-M12x1,5-G1/4	G1/4	30	12	10	M12 x 1,5	4	19	400	30

Design:

Sealing according to DIN3852 form D by means of sealing ring DIN 7603 Form A and 60° sealing cone.

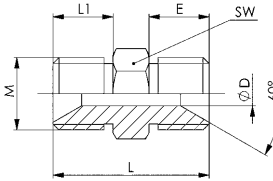
Note:

Warning: Do not use Teflon tape!

No. 6993-M12x1,5

Double connector

Zinc-plated.



CAD

Order no.	Article no.	L	L1	E	M	dia. D	SW	max. operating pressure [bar]	Weight [g]
69344	6993-M12x1,5	26	10	10	M12 x 1,5	4	13	400	15

Design:

Sealing according to DIN 3852 form D and 60° sealing cone.

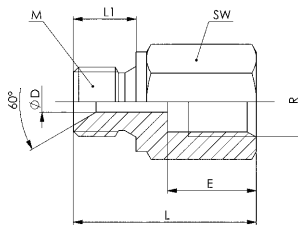
Note:

Warning: Do not use Teflon tape!

No. 6996

Adaptor

Zinc-plated.



CAD

Order no.	Article no.	R	L	L1	E	M	dia. D	SW	max. operating pressure [bar]	Weight [g]
69609	6996-G1/4-M12x1,5	G1/4	26	12	12	M12x1,5	4	19	400	30
69625	6996-G1/4-G1/8	G1/4	31	8	17	G1/8	3	19	400	38
69641	6996-G1/4-G1/4-35	G1/4	35	12	17	G1/4	4	19	400	44
160093	6996-G1/4-G1/4-59	G1/4	59	12	13	G1/4	4	19	400	100
153288	6996-M16/M12x1,5	M16x1,5	41	11	11	M12x1,5	4	22	400	85

Design:

Sealing according to DIN3852 form D by means of sealing ring DIN 7603 Form A and 60° sealing cone.

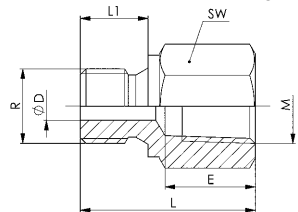
Note:

Warning: Do not use Teflon tape!

No. 6997

Reducer

Zinc-plated.



CAD

Order no.	Article no.	R	L	L1	E	M	dia. D	SW	max. operating pressure [bar]	Weight [g]
69666	6997-G1/4-1/4NPT	G1/4	31	12	15	1/4 NPT	5	19	400	38

Design:

Sealing by means of sealing ring DIN 7603 Form A.

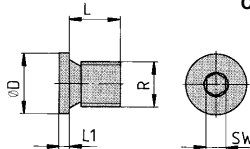
Note:

Warning: Do not use Teflon tape!

No. 908G

Threaded plug with soft seal

Zinc-plated.



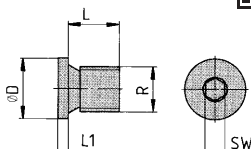
CAD

Order no.	Article no.	R	L	L1	dia. D	SW	max. operating pressure [bar]	Weight [g]
176693	908G-G1/8	G1/8	8	4	14	5	400	7
176719	908G-G1/4	G1/4	12	5	19	6	400	17
179952	908-M16x1,5	M16x1,5	12	5	22	8	400	24
176701	908-G3/8	G3/8	12	5	24	8	400	22

DIN 908

Screw plug

Zinc-plated.



CAD

Order no.	Article no.	R	L	L1	dia. D	SW	Weight [g]
69393	908-G1/8	G1/8	8	3	14	5	6
69419	908-G1/4	G1/4	12	3	18	6	13

Subject to technical alterations.