

No. 6958S-16

Clamping arm out of steel



Order no.	Article no.	X	X1*	Clamping force at 100 bar [kN]	Clamping force at 250 bar [kN]	Clamping force at 350 bar [kN]	Weight [g]
320218	6958S-16-00-01	12	12	2,0	5,0	7,0	52
320234	6958S-16-00-02	18	12	1,3	3,3	4,6	60
320259	6958S-16-00-03	24	12	1,0	2,5	3,5	66
320275	6958S-16-00-04	30	12	0,8	2,0	2,8	72
322438	6958S-16-00-05**	-	12	-	-	-	74

* X1 = level length at 90°

**Clamp arm blank, unhardened

Design:

Case-hardening steel, case-hardened.

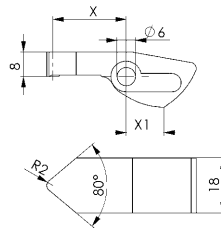
Application:

For vertical clamp 6958SU-16 and 6958ST-16.

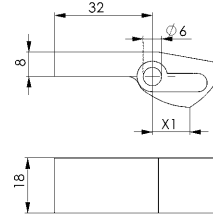
Note:

Clamping pressure, leverage, flow volume and clamp arm weight must always be observed.

Clamping arm

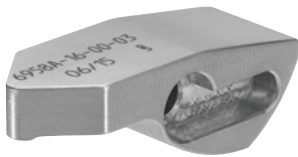


Clamping arm blank



No. 6958A-16

Clamping arm out of aluminium



Order no.	Article no.	X	X1*	Clamping force at 100 bar [kN]	Weight [g]
320242	6958A-16-00-02	18	12	1,3	21
320267	6958A-16-00-03	24	12	1,0	23
320283	6958A-16-00-04	30	12	0,8	25
322453	6958A-16-00-05**	-	12	-	26

* X1 = level length at 90°

** Clamp arm blank

Design:

Aluminium.

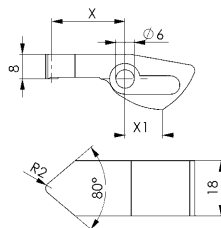
Application:

For vertical clamp 6958SU-16 and 6958ST-16.

Note:

Clamping pressure, leverage, flow volume and clamp arm weight must always be observed. Max. operating pressure 100 bar.

Clamping arm



Clamping arm blank

