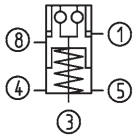


## No. 6108LA-XX-08

### Installation clamping module for automation solutions

Pneumatic opening.  
 Pneumatic blow-out.  
 Opening operating pressure:  
 K10.3 min. 5 bar.  
 K20.3 min. 4.5 bar.  
 Cover and piston hardened.  
 Repeat accuracy < 0.005 mm.  
 With locking control (pneum.)  
 and support control (pneum.).



Order no.	Size	Pull-in/locking force up to [kN]	Holding force* [kN]	Blow out	Weight [Kg]
550257	K10.3	10	25	●	1,4
550258	K20.3	17	55	●	2,6

#### Design:

Centric blow-out, support control and opening and locking control.

#### Application:

Zero-point clamping system for automation solutions for set-up-time-optimised clamping during cutting and non-cutting machining.

#### Note:

Locking control: Dynamic pressure with locked clamping module, flow-through with opened clamping module.

Opening control: Dynamic pressure with opened clamping module, flow-through with locked clamping module.

The installation clamping module is opened pneumatically and locked mechanically by spring force. Subsequent uncoupling of the pressure line is possible at any time (module is clamped at normal pressure).

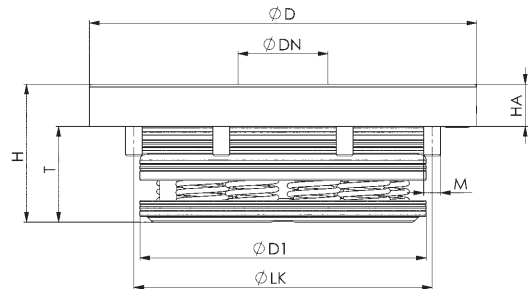
The clamping module has five connections:

- 1 = pneum. opening
- 3 = pneum. blow-out
- 4 = pneum. opening control inlet
- 5 = vent
- 8 = pneum. locking control, inlet

\* Please observe the installation instructions.

#### On request:

- Installation diagrams



#### Dimensions:

Order no.	Size	dia. D	dia. DN	dia. D1	H	HA	dia. LK	M	T
550257	K10.3	112	22	78	35	10	88	6 x M6	25
550258	K20.3	138	32	102	49	15	115	8 x M6	34

