

## No. 6204P-S2

### Fixture plate

Aluminium, suitable for 2-point clamping station K10.2.

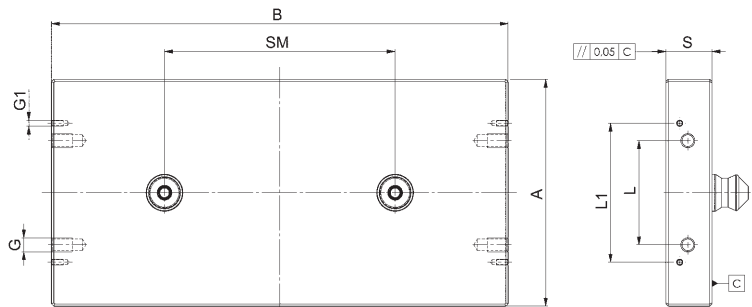
Order no.	Size	A	B	G	G1	L	L1	S	SM	Weight [Kg]
429266	K10.2	166	396	M12	M5	90	120	30	200	6

#### Note:

On request, we can incorporate mounting holes according to your specifications in the fixture plate.

#### On request:

Other dimensions, pitch spacings and number of equipped pull-studs.



CAD



## No. 6204P-S4

### Fixture plate

Aluminium, suitable for 4-point clamping station K10.2.

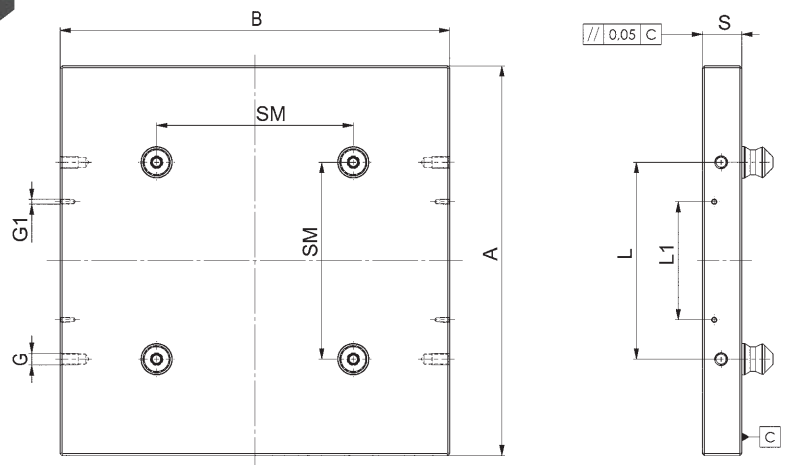
Order no.	Size	A	B	G	G1	L	L1	S	SM	Weight [Kg]
429282	K10.2	366	366	M12	M5	200	120	30	200	10

#### Note:

On request, we can incorporate mounting holes according to your specifications in the fixture plate.

#### On request:

Other dimensions, pitch spacings and number of equipped pull-studs.



CAD



Subject to technical alterations.

## No. 6204P-S6

### Fixture plate

Aluminium, suitable for 6-point clamping station K10.2.

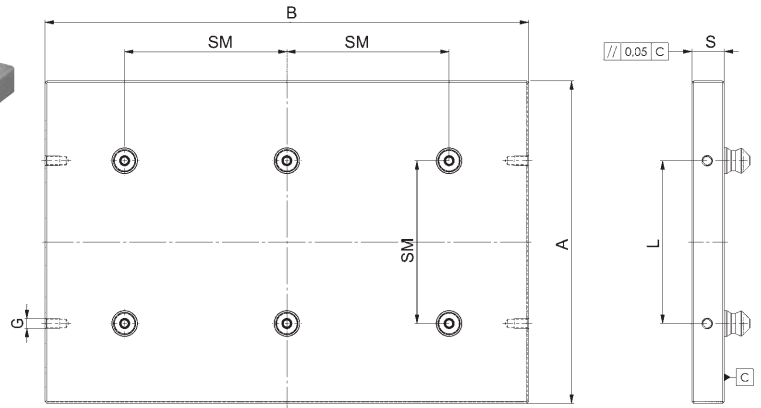
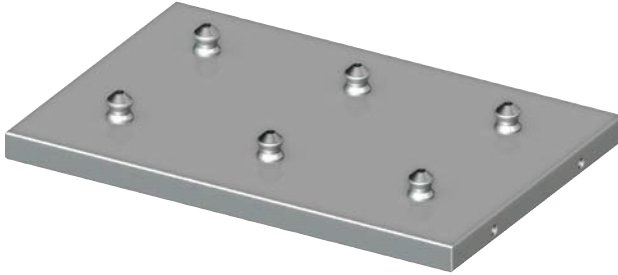
Order no.	Size	A	B	G	L	S	SM	Weight [Kg]
429308	K10.2	366	566	M12	200	30	200	16

#### Note:

On request, we can incorporate mounting holes according to your specifications in the fixture plate.

#### On request:

Other dimensions, pitch spacings and number of equipped pull-studs.



## No. 6204P-S8

### Fixture plate

Aluminium, suitable for 8-point clamping station K10.2.

Order no.	Size	A	B	G	L	S	SM	Weight [Kg]
429324	K10.2	366	770	M12	200	30	200	22

#### Note:

On request, we can incorporate mounting holes according to your specifications in the fixture plate.

#### On request:

Other dimensions, pitch spacings and number of equipped pull-studs.

