

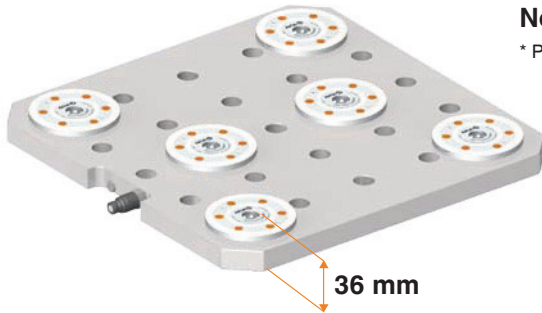
No. 6204S6HA-008

6-point clamping station

Hydraulic unlocking.
Pneumatic blow-out.

Clamping modules' contact surface: Steel, stainless and hardened.

Base plate: Steel, unhardened.
Repetition accuracy < 0.005 mm.



Order no.	Size	Pull-in/locking force up to	Holding force*	Blow out	Weight
		[kN]	[kN]		
427625	K10.2	6x10	6x25	●	55

Design:

Hydraulic clamping station for optimised clamping times on machine tables with distance between slots of 100 mm. Clamping is with M16 socket head screws. At least two fitting holes are attached for alignment.

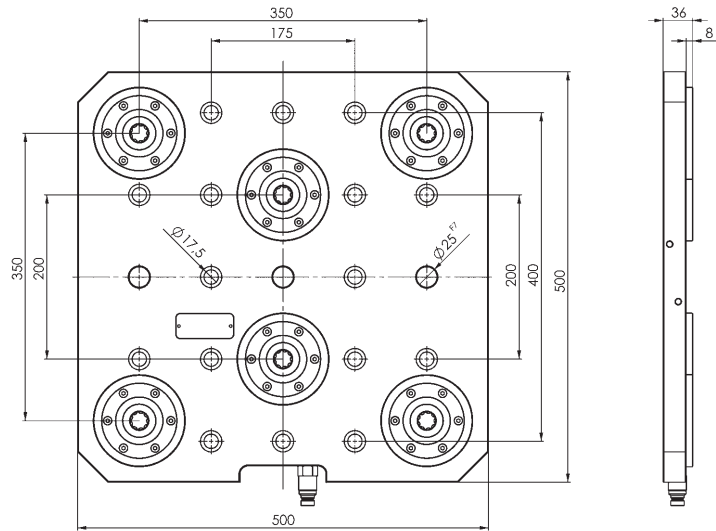
The quick coupling plug is pre-mounted, and the integrated blow-out function can be individually connected.

Advantage:

Low overall height of only 36 mm.

Note:

* Please observe the installation instructions.



CAD



No. 6204WU12HA-001

12-point clamping cube

Hydraulic unlocking.
Pneumatic blow-out.

Clamping modules' contact surface: Steel, stainless and hardened.

Base plate: Steel, unhardened.
Repetition accuracy < 0.005 mm.



Order no.	Size	Pull-in/locking force up to	Holding force*	Blow out	Weight
		[kN]	[kN]		
427641	K10.2	12x10	12x25	●	210

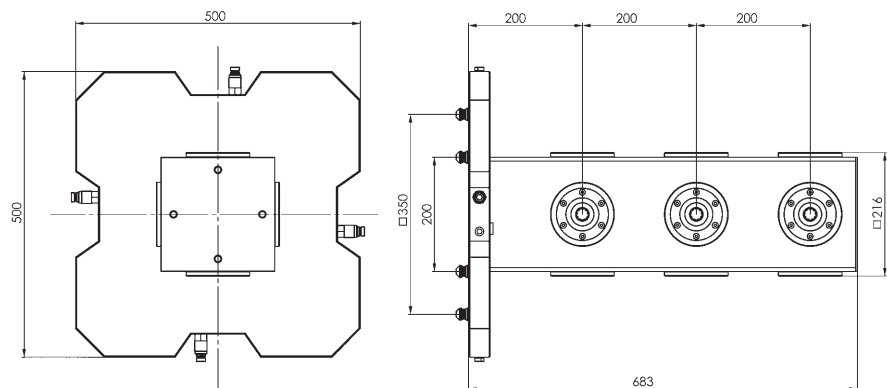
Design:

Hydraulic clamping cube for set-up-time-optimised clamping on clamping station 6204S6HA-008. Fastening is with pull-studs installed underneath.

The pitch spacing of the clamping modules is 200 mm. The quick-coupling plug is pre-mounted, and the integrated blow-out function can be individually connected.

Note:

* Please observe the installation instructions.



Subject to technical alterations.