



No. 6208IM

Clamping module, mechanical, with indexing

Mechanical opening and closing.
Tempered steel, plasma-nitrided and burnished.
Repetition accuracy < 0.01 mm.



Order no.	Size	Pull-in/locking force up to	Holding force*	Tightening torque	Weight
		[kN]	[kN]	[Nm]	[g]
559680	K10	6	25	30	1031
562355	K20	10	55	30	3295

Application:

Mechanical zero point clamping system with indexing grooves offset by 90° for time-optimised clamping during cutting and non-cutting machining.
Especially suitable for the modular design of clamping solutions via zero point clamping system.

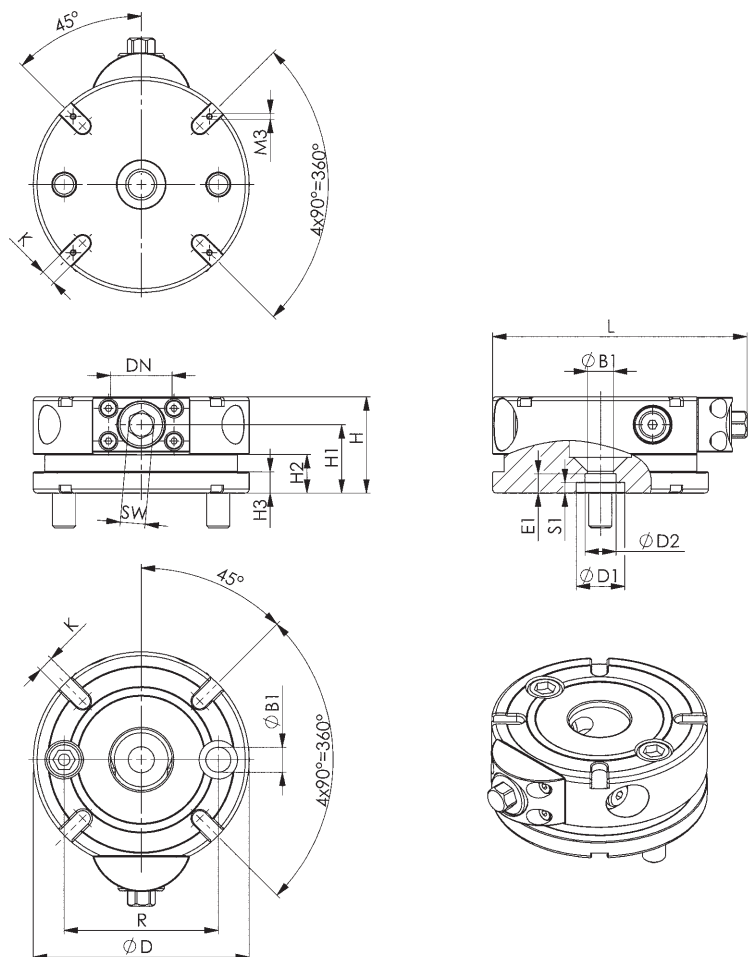
Note:

The mechanical assembly clamping module with indexing notches offset by 90° has high holding, pull-in and locking forces.
The clamping module can be positioned on the machine table and fastened with standard clamping elements at the circumferential clamping rim.
The positioning bore for stop sleeves and a through-hole for fastening onto grid plates with countersunk head screws are present underneath (observe the max. permitted screw force). The mounting bore for the K20 pull-stud is also in the module.

Pull-stud: The K10 and K20 versions of the pull-studs are used with this mechanical clamping module. The zero point, sword or undersize pull-stud can be used, depending on the application.

A cylinder pin, as well as fastening bolts for use with the support elements (6210S) or for use on a fixture, are supplied as standard.

This clamping module can be used at ambient temperatures of up to max. 200°C.
* Please observe the installation instructions.



Dimensions:

Order no.	Size	dia. B1	dia. D	dia. D1 0/+0,01	dia. D2 F7	dia. DN	E1	H ±0.01	H1	H2	H3	K F6	L	R	S1	SW
559680	K10	9,0	78	15	-	22	4,5	32	22,0	-	-	8	93	50	-	10
562355	K20	13,5	112	25	16	32	10,0	50	35,5	20	11	8	132	80	5,5	13



Subject to technical alterations.