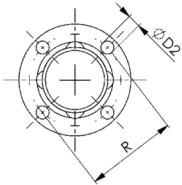
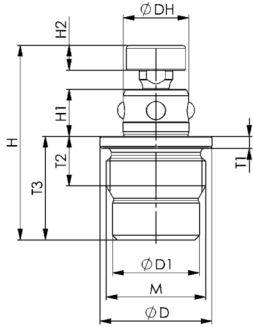


No. 6214RM-250

Clamping module, mechanical, screw-in version

Mechanical opening.
Housing and piston hardened.
Repetition accuracy < 0.1 mm.



Order no.	Size	Pull-in/locking force up to	Holding force*	Weight
		[N]	[N]	[g]
559090	RM250	100	1000	26

Application:

Mechanical zero point clamping system for set-up-time-optimised clamping during non-cutting machining.

Note:

The mechanical zero-point clamping system is opened by pressing the actuator knob with hand force. Interlock is achieved mechanically via spring force. A tool is not required for this. The base plate serves as the contact surface, into which the clamping module is screwed. An extended actuating pin with a height of 20 mm is available under the order no. 561391. A suitable mounting tool is available under the order no. 559439. Order numbers of the clamping sleeves: 559092 and 559093.

* Please observe the installation instructions.

On request:

- Installation diagrams

Dimensions:

Order no.	Size	dia. D	dia. D1	dia. D2	ØDH	H	H1	H2	M	R	T1	T2	T3
559090	RM250	18	14	2,1	10,6	28,2 - 31,3	7,6	4	M16 x 1	14,75	1,95	8	16,7



Subject to technical alterations.

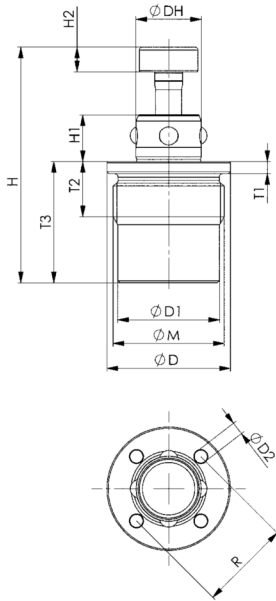
No. 6214RM-251

Clamping module with locking function, mechanical, screw-in version

Mechanical opening.
Housing and piston hardened.
Repetition accuracy < 0.1 mm.



NEW!



Order no.	Size	Pull-in/locking force up to	Holding force*	Weight
		[N]	[N]	[g]
567133	RM251	100	1000	28

Application:

Mechanical zero point clamping system with detent function for set-up-time-optimised clamping during non-cutting machining. Very suitable for clamping smaller fixtures, e.g. in assembly.

Note:

The mechanical zero-point clamping system is opened by pressing the actuator knob with hand force and it remains in this position. Locking involves pressing the actuator knob again mechanically using spring force. A tool is not required for this. The base plate serves as the contact surface, into which the clamping module is screwed. An extended actuating pin with a height of 20 mm is available under the order no. 561391. A suitable mounting tool is available under the order no. 559439.

* Please observe the installation instructions.

On request:

- Installation diagrams

Dimensions:

Order no.	Size	dia. D	dia. D1	dia. D2	ØDH	H	H1	H2	M	R	T1	T2	T3
567133	RM251	20	16,5	2,1	10,6	31,2 - 38,8	7,6	4	M18 x 1	14,75	1,95	9	19,7