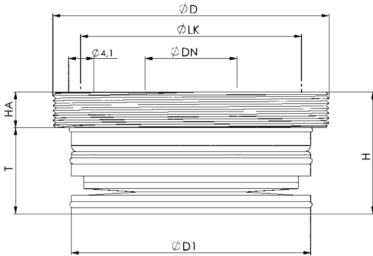
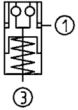


No. 6370EARH

Installation clamping module, screw-in version

Hydraulic opening.
Opening operating pressure: min. 50 bar - max. 60 bar.
Cover and piston hardened.
Repeatability < 0.005 mm.



Order no.	Size	Pull-in/locking force up to	Holding force*	Blow out	Weight
		[kN]	[kN]		[g]
305953	KH5	5	13	●	150

Application:

Zero-point clamping system for set-up-time-optimised clamping during cutting and non-cutting machining. With small space requirement and low installation height.

Note:

The installation clamping module has high holding, pull-in and locking forces. This is opened hydraulically (1) and mechanically locked through spring force. Subsequent uncoupling of the pressure lines is possible at all times (module is tensioned pressure-free). The contact surface serves as the upper housing surface. The clamping module with blow-out has two connections: 1x hydr. opening (1), 1x pneum. Blow-out and support control (3). (The pneumatic blow-out and support control can optionally be connected.) The suitable installation tool is available under the AMF order no. 41046.
* Please observe the installation instructions.

On request:

- Installation diagrams

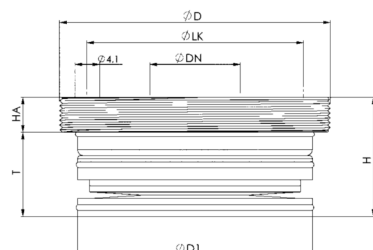
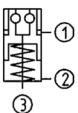
Dimensions:

Order no.	Size	dia. D	dia. DN	dia. D1	H	HA	dia. LK	T
305953	KH5	M45 x 1	15	39	19,8	5,8	36	14

No. 6370EARL

Installation clamping module, screw-in version

Pneumatic opening.
Opening operating pressure: min. 8 bar - max. 12 bar.
Retensioning operating pressure (turbo): min. 5 bar - max. 6 bar.
Cover and piston hardened.
Repeatability < 0.005 mm.



Order no.	Size	Pull-in/locking force up to	Holding force*	Blow out	Weight
		[kN]	[kN]		[g]
563900	KP5	1,5	13	●	150

Application:

Zero-point clamping system for set-up-time-optimised clamping during cutting and non-cutting machining. With small space requirement and low installation height.

Note:

The installation clamping module has high holding, pull-in and locking forces. This is opened pneumatically (1) and locked mechanically through spring force. To achieve the specified pull-in and locking forces, it must be briefly retensioned pneumatically (turbo) (2). Subsequent uncoupling of the pressure lines is possible at any time (module is clamped pressure-free). The contact surface is the upper surface of the housing. It is recommended to use the pneumatic pressure booster no. 6370ZVL. The clamping module with blow-out has three connections: 1x pneum. Opening (1), 1x pneum. Retensioning (turbo) (2), 1x pneum. Blow-out and support control (3). (The pneumatic blow-out and support control can optionally be connected.) The suitable installation tool is available under the AMF order no. 41046.
* Please observe the installation instructions.

On request:

- Installation diagrams

Dimensions:

Order no.	Size	dia. D	dia. DN	dia. D1	H	HA	dia. LK	T
563900	KP5	M45 x 1	15	39	19,8	5,8	36	14

Subject to technical alterations.