

## No. 6370P2

### Fixture plate

Aluminium, suitable for double clamping station.

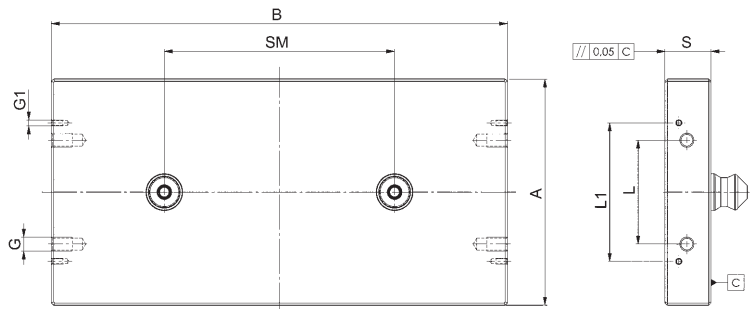
Order no.	Size	A	B	G	G1	L	L1	S	SM	Weight [Kg]
426700	K10	146	240	M12	M5	90	120	30	100	2,5
425041	K20	196	396	M12	M5	90	120	40	200	6,0
426783	K40	296	546	M12	-	120	-	45	320	19,0

#### Note:

Fastening bores for handles are attached to the end faces of the interchangeable pallets. See dimensions table L1 and G1. We can incorporate additional fastening bores according to your specifications in the change pallet on request.

#### On request:

Other dimensions, pitch spacings and number of equipped pull-studs.



CAD



## No. 6370P4

### Fixture plate

Aluminium, suitable for quadruple clamping station.

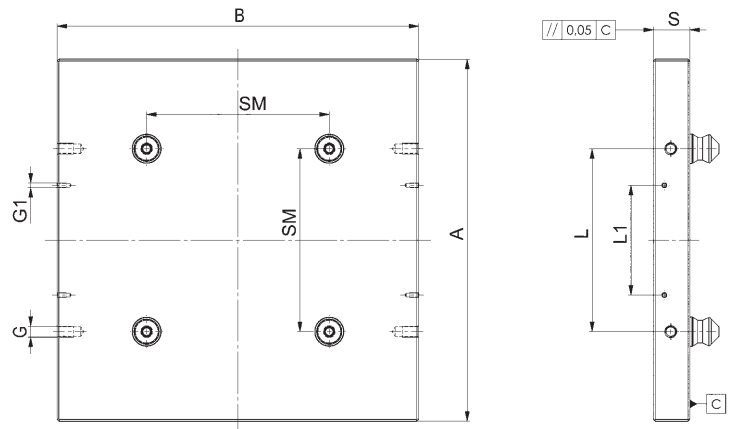
Order no.	Size	A	B	G	G1	L	L1	S	SM	Weight [Kg]
426767	K10	240	240	-	-	-	-	30	100	4,5
425033	K20	396	396	M12	M5	200	120	40	200	16,0
426809	K40	546	546	M12	-	320	-	45	320	35,0

#### Note:

Fastening bores for handles are attached to the end faces of the interchangeable pallets. See dimensions table L1 and G1. We can incorporate additional fastening bores according to your specifications in the change pallet on request.

#### On request:

Other dimensions, pitch spacings and number of equipped pull-studs.



CAD



Subject to technical alterations.