

No. 6370ZN-10

K10 pull-stud for M10 engagement screw

Hardened, for clamping modules size K10.



Order no.	Size	dia. DN	dia. D1	dia. D2	H	H1	M	T	Weight [g]
554936	K10	22,0	15	10	19	16	-	3	27
554937	K10	22,0	15	10	19	16	-	3	27
554938	K10	21,8	15	10	19	16	-	3	27
304535	K10	21,8	-	-	-	-	M 8	-	30

Design:

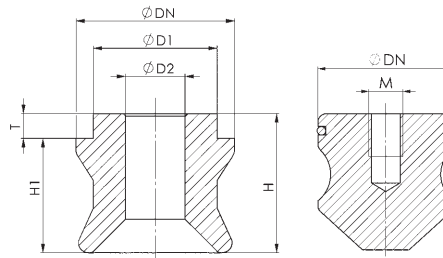
order no. 554936: zero point pull-stud, order no. 554937: timing pull-stud, order no. 554938: undersize pull-stud, order no. 304535: protection pull-stud

Note:

The timing pull-stud has an additional alignment bore, which can optionally be used for simple installation.

On request:

Protection pull-stud made of plastic.



No. 6370ZNR-10-02

Pull-stud K10 for engagement screw M10 with reduced fitting collar

Hardened, for clamping modules size K10.



NEW!



Order no.	Size	dia. DN	dia. D1	dia. D2	H	H1	M	T	Weight [g]
562755	K10	22,0	14,5	10	19	16	-	3	27
562757	K10	22,0	14,5	10	19	16	-	3	27
562759	K10	21,8	14,5	10	19	16	-	3	27
304535	K10	21,8	-	-	-	-	M 8	-	30

Design:

Order no. 562755: zero point pull-stud, order no. 562757: timing pull-stud, order no. 562759: undersize pull-stud, order no. 304535: protection pull-stud

Application:

For clamping in a fitting hole with a reduced diameter e.g. before heat treatment of a workpiece. After the boring out the hole, the respective standard pull-stud can be used.

Note:

The timing pull-stud has an additional alignment bore, which can optionally be used for simple installation.

On request:

Protection pull-stud made of plastic.

No. 6370ZN-20

K20 pull-stud for M12 engagement screw

Hardened, for clamping modules size K20.



Order no.	Size	dia. DN	dia. D1	dia. D2	H	H1	M	T	Weight [g]
303149	K20	32,0	25	12	28	23	-	5	110
303156	K20	32,0	25	12	28	23	-	5	110
303164	K20	31,8	25	12	28	23	-	5	110
303172	K20	31,8	-	-	-	-	M 8	-	110

Design:

Order no. 303149: zero point pull-stud, order no. 303156: timing pull-stud, order no. 303164: undersize pull-stud, order no. 303172: protection pull-stud

Note:

The timing pull-stud has an additional alignment bore, which can optionally be used for simple installation.

On request:

Protection pull-stud made of plastic.