

No. 6370ZSZ-112

Collet attachment for clamping module K20, hydr.

Material: high-strength aluminium.

Order no.	dia. D	dia. D1	ØD2 0/+0.01	Clamping stroke Ø [mm]	H	H1	Weight [g]
550286	112	20	25	0,5	50	30	1133

Design:

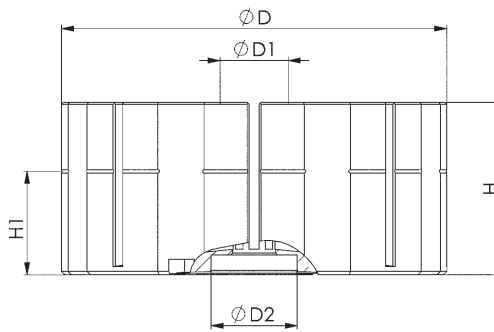
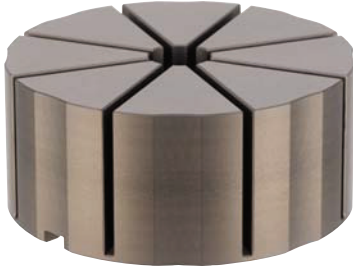
The 112 mm diameter collet attachment is suitable for the hydraulic AMF zero-point clamping system K20 with indexing, order no. 428425. The collet is made from anodised, high-strength aluminium.

Application:

The collet attachment is placed on the AMF Zero Point clamping system K20 in the hydraulic version and guides the radial clamping force to the workpiece after the clamping module is closed.

The workpiece contour is milled into the collet attachment with a minimum clamping depth of 2 mm. The collet attachment can be milled off to a height of H1, allowing new workpiece contours to be introduced.

The maximum workpiece diameter is 100 mm.



CAD



No. 6370ZSB

Mounting kit for collet attachment

for collet No. 6370ZSZ-112

Order no.	Size	Weight [g]
550287	K20	190

Design:

The mounting set includes:

- 1 pull-stud K20, design: strut
- 1 engagement screw K20
- 1 lock nut M12
- 2 indexing slot nuts, width 8 mm

Application:

The mounting set is mounted with the collet attachment 112 mm, order no. 550286.

After installation, the collet attachment can be securely and hydraulically clamped onto the AMF clamping modules, size K20.



CAD

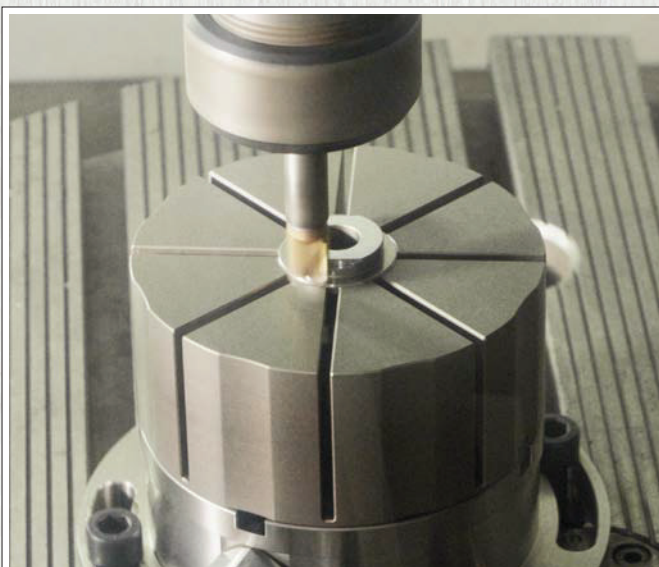


Subject to technical alterations.

**Collet attachment for
clamping module K20, hydr.**
550286

**Mounting kit for
collet attachment**
550287

**Assembly element K20,
hydraulic, with indexing**
534412



Subject to technical alterations.