

No. 6370ZSK

Quick fitting coupling, pneumatic

Max. operating pressure 12 bar.



Order no.	Nominal bore [NW]	Nominal flow [l/min]	SW [mm]	Weight [g]
430041	4,2	563	14	23
430066	5,0	563	14	27

Application:

This pneumatic quick-release coupling is particularly suitable for use in the AMF zero-point clamping technology of the zero-point system.

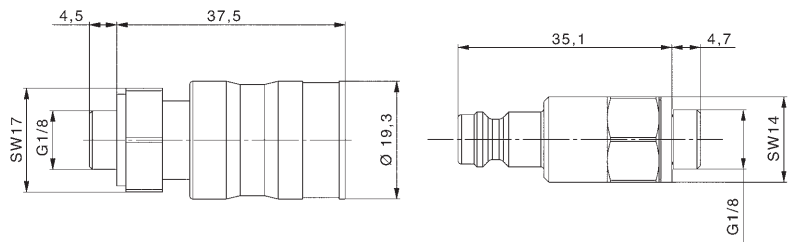
Note:

Sleeve with Order No. 430066:

Coupling valve with venting function and check valve. External thread G1/8.

Connector with Order No. 430041:

Dirt and shaving-repellent coupling connector with borehole for forced venting of the clamping station, fixture or zero-point clamping module. External thread G1/8.



430066 Sleeve

430041 Connector



No. 6370ZS-07

Hose, pneumatic

Polyurethane, outside calibrated.
Max. operating pressure 10 bar.



Order no.	Hose dia. [mm]	Length [m]	Weight [g]
430140	8	3	100

Application:

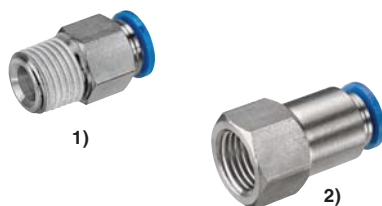
Hoses are used for the pneumatic connection of extension clamping modules or clamping stations.



No. 6370ZR-02

Push-in fittings, pneumatic

Max. operating pressure 12 bar.
For hose diameter 8 mm.



Order no.	Fig. No.	Connection	Weight [g]
421479	1	G1/8	14
421453	1	G1/4	16
430108	2	G1/8	19
430124	2	G1/4	27

Application:

Screwed connections are used for the pneumatic connection of extension clamping modules or clamping stations.

