

ANACONDA SEALTITE CONDUIT TYPE NMFG BLUE



All-plastic, medium mechanical strength, food grade conduit..

Sealtite NMFG is a conduit specially made for the food industry. The smooth jacket of FDA approved compound is easily cleaned and does not promote bacteria growth. This makes the NMFG perfectly applicable in the food and pharmaceutical industry.

Material & Construction:

Construction: Thick smooth thermoplastic (PVC compound) core reinforced with PVC spiral.

Cover specifications: PVC, lead-free according to RoHS, specially formulated for food and beverage applications per FDA CFR 21 and NSF 51 requirements.

Temperature: -35 °C to +60 °C, intermittent up to +80 °C.

Colour: blue.



Spiral reinforced PVC



Classification according NEN-EN-IEC 61386:

Compression resistance: Class 1, Very Light (125 N).

Impact resistance: Class 3, Medium (2 J).

Tensile strength: Class 4, Heavy (1000 N).

Protection class: IP 66 / 67 (dust-proof, water-tight).

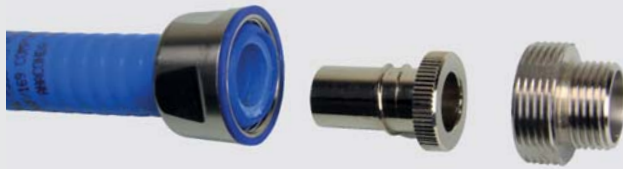
Sealtite	Diametre		Bending radius		Standard carton		Small carton		Reels		Weight (Kg/m)
	Size (Inch)	Inside (mm)	Outside (mm)	Static (mm)	Dynamic (mm)	Metre	Article No.	Metre	Article No.	Metre	
						Blue			Blue		Blue
3/8"	12,6	17,8	70	100	30	359.012.0	-	-	-	-	0,12
1/2"	16,0	21,1	100	135	30	359.016.0	-	-	-	-	0,18
3/4"	21,1	26,4	130	175	30	359.020.0	-	-	-	-	0,28
1"	26,8	33,1	180	220	30	359.026.0	-	-	-	-	0,34
1.1/4"	35,4	41,8	225	270	15	359.035.0	-	-	-	-	0,46
1.1/2"	40,3	47,8	255	320	15	359.040.0	-	-	-	-	0,60
2"	51,6	59,9	310	400	15	359.050.0	-	-	-	-	0,80

The fittings for Sealtite NMFG are outlined on page 8-13 till 8-17. Sealtite fittings illustrated in chapter 5 can also be used.



Sealtite	1/4"	5/16"	3/8"	1/2"	3/4"	1"	1.1/4"	1.1/2"	2"	2.1/2"	3"	4"
ISO	M10 / M12	M16 / M20	M16 / M20	M20	M25	M32	M40	M50 / M63	M50 / M63	M75	M90	-
Pg	7	9-11	11 / 13,5	16	21	29	36	42	48	-	-	-
NPT	-	-	1/2"	1/2"	3/4"	1"	1.1/4"	1.1/2"	2"	2.1/2"	3"	4"

FOOD GRADE FITTINGS, IP 68, STAINLESS STEEL AISI-316



Anaconda Compact Hygienic Design, stainless steel AISI-316 "food fitting" for Anaconda Sealtite

Anaconda compact hygienically designed, stainless steel AISI-316 food fittings can be used with all types of Anaconda Sealtite conduits (except CNP). The compact food fittings are compact in shape and lighter in weight against the standard food fittings. These stainless steel compact food fittings are designed with rounded corners and have a smooth contourless profile to minimise the risk of bacteria deposits and to promote easy cleaning. They display excellent resistance to corrosion.

Construction: Stainless steel AISI-316 fitting, consisting of 5 parts (counter nut, upper seal, clamping ring, ferrule and body).

Material: Counter nut and body are stainless steel AISI-316 and the ferrule is from nickel plated brass. The blue upper seal and clamping ring are made of TPE in accordance with FDA / CFR 21.

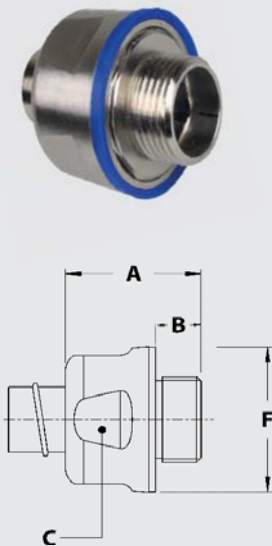
Special approvals: Special TPE seals, halogen-free, specially formulated for food and beverage applications per FDA guideline CFR 21.

Hygienic design approval by EHEDG.

Temperature: -45 °C till +105 °C continuous.

Protection class: IP 68 according EN 60529, IP69 according DIN 40050-9 (till 40 Bar high pressure).

Colour: Metal.



ISO straight, compact, food grade fitting, male, stainless steel AISI-316



Thread	Sealtite Size (NW)	Min. Internal Bore (mm)	Dimensions in mm					Standard Package	Article Number	Weight (Kg/100)
			A	B	C	D	F			
M16 x 1,5	3/8"	10,4	29	10	27	-	31	10	742.016.9	5,7
M20 x 1,5	1/2"	13,8	30	10	30	-	34	10	742.020.9	6,9
M25 x 1,5	3/4"	18,5	31	10	36	-	40	5	742.025.9	9,8
M32 x 1,5	1"	23,8	35	12	44	-	48	5	742.032.9	17,2
M40 x 1,5	1.1/4"	31,8	35	13	53	-	57	2	742.040.9	21,7
M50 x 1,5	1.1/2"	36,8	38	14	60	-	65	1	742.050.9	32,6
M63 x 1,5	2"	47,8	40	16	72	-	78	1	742.063.9	44,3

General Index
Anaconda Multiflex
Anaconda Multitite
Anaconda Sealtite
Anaconda Sealtite Spec.
Anaconda Fittings
Anaconda Accessories
Anaconda IECEx - ATEX
Anaconda All Plastic

FOOD GRADE FITTINGS, IP 68, STAINLESS STEEL AISI-316



Anaconda Hygienic Design, stainless steel AISI-316 "food fitting" for Anaconda Sealtite.

Anaconda hygienically designed, stainless steel AISI-316 food fittings can be used with all types of Anaconda Sealtite conduits (except CNP). These stainless steel fittings are designed with rounded corners and have a smooth contourless profile to minimise the risk of bacteria deposits and to promote easy cleaning. They display excellent resistance to corrosion.

Construction: Stainless steel AISI-316 fitting, consisting of 6 parts (lower seal, counter nut, upper seal, clamping ring, ferrule and body).

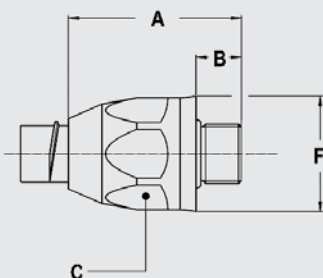
Material: Counter nut and body are stainless steel AISI- 316 and the ferrule is from nickel plated brass. Clamping ring is from PA6. The blue rubber seals are made of TPE in accordance with FDA / CFR 21.

Special approvals: Special TPE seals, halogen-free, specially formulated for food and beverage applications per FDA guideline CFR 21.

Temperature: -45 °C till +105 °C continuous.

Protection class: IP 68 according EN 60529, IP69 according DIN 40050-9 (till 40 Bar high pressure).

Colour: Metal.



ISO straight food grade fitting, male, stainless steel AISI-316



Thread	Sealtite Size (NW)	Min. Internal Bore (mm)	Dimensions in mm					Standard Package	Article Number	Weight (Kg/100)
			A	B	C	D	E			
M16 x 1,5	3/8"	10,4	48	12	27	-	31	10	832.016.9	6,6
M20 x 1,5	1/2"	13,8	50	13	30	-	34	10	832.020.9	8,0
M25 x 1,5	3/4"	18,5	57	15	36	-	41	5	832.025.9	11,8
M32 x 1,5	1"	23,8	68	15	46	-	53	5	832.032.9	22,8
M40 x 1,5	1.1/4"	31,8	75	16	54	-	62	2	832.040.9	34,2
M50 x 1,5	1.1/2"	36,8	81	18	63	-	70	1	832.050.9	38,6
M63 x 1,5	2"	47,8	88	20	77	-	85	1	832.063.9	76,6

FOOD GRADE FITTINGS, IP 67, NICKEL PLATED BRASS



Anaconda, mirror-polished “elbow food fitting” for Anaconda Sealtite.

Anaconda hygienically designed **mirror polished** elbow fittings can be used with Anaconda Sealtite NMFG and offer a high corrosion resistance. Because of the special mirror-polished treatment these fittings are specifically smooth and give a good protection especially for the pharmaceutical and food industry. The mirror polished treatment reduces the risk of bacterial formation and permits easy cleaning. The fittings have a perfect fit, by using a special ferrule, and are easy to install.

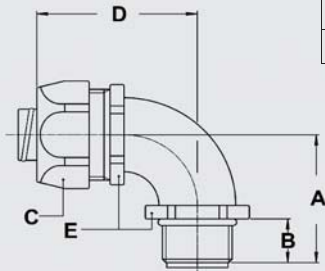
Construction: Nickel plated brass fitting, consisting of 4 parts (counter nut, clamping ring, ferrule and body).
Material: Counter nut, body and ferrule are nickel plated brass. Clamping ring and inserts are made from PA6 (red for ISO metric).
Temperature: -45 °C till +105 °C continuous.
Protection class: IP 67 (dust-proof, water-tight).
Colour: Metal.



ISO 90° fitting, male, mirror-polished nickel plated brass



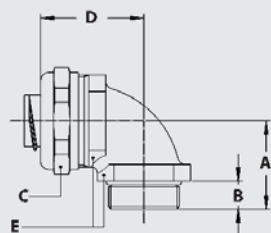
Thread	Sealtite Size (NW)	Min. Internal Bore (mm)	Dimensions in mm					Standard Package	Article Number	Weight (Kg/100)
			A	B	C	D	E			
M16 x 1,5	3/8"	10,2	32	12	26	42	22	10	818.916.0-NM	8,2
M20 x 1,5	3/8"	10,2	33	13	26	42	22	10	818.917.0-NM	8,4
M20 x 1,5	1/2"	13,9	36	13	29	43	27	10	818.920.0-NM	12,6
M25 x 1,5	3/4"	18,5	43	15	35	48	33	5	818.925.0-NM	19,2
M32 x 1,5	1"	23,8	48	15	45	59	42	5	818.932.0-NM	31,6



ISO 90° fitting, compact, male, mirror-polished nickel plated brass

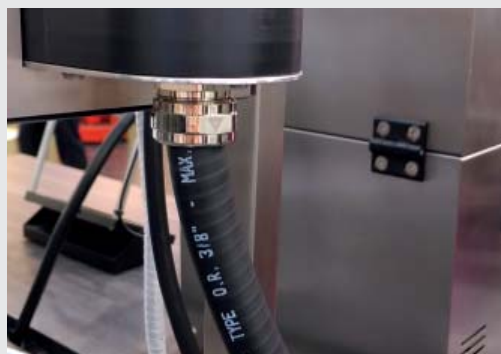
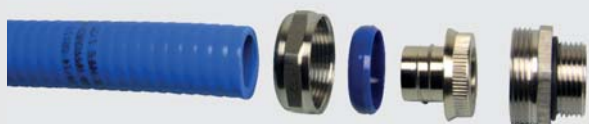


Thread	Sealtite Size (NW)	Min. Internal Bore (mm)	Dimensions in mm					Standard Package	Article Number	Weight (Kg/100)
			A	B	C	D	E			
M40 x 1,5	1.1/4"	33,3	46	13	53	53	52	2	718.940.0-NM	40,1
M50 x 1,5	1.1/2"	38,0	52	14	62	57	60	2	718.950.0-NM	57,5
M63 x 1,5	2"	49,0	62	16	76	68	72	2	718.963.0-NM	90,6



General Index
 Anaconda Multiflex
 Anaconda Multitite
 Anaconda Sealtite
 Anaconda Sealtite Spec.
 Anaconda Fittings
 Anaconda Accessories
 Anaconda IECEx - Atex
 Anaconda All Plastic

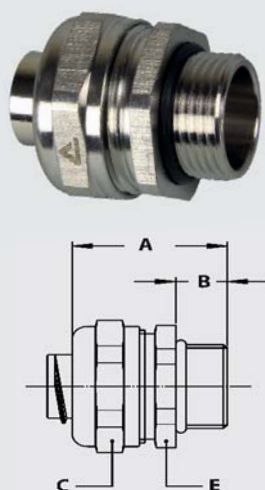
COMPACT FITTINGS, IP 67, STAINLESS STEEL AISI-304



Anaconda compact fittings, stainless steel AISI-304, for Anaconda Sealtite.

The compact stainless steel AISI-304 fittings are specially designed to be used with Anaconda Sealtite NMFG. This Anaconda fitting is a universal fitting with shorter design and lower weight. The ferrule is adjusted for a better fit and easier to install. Because the fittings are made from stainless steel AISI-304 they offer a high corrosion protection in combination with a nice appearance.

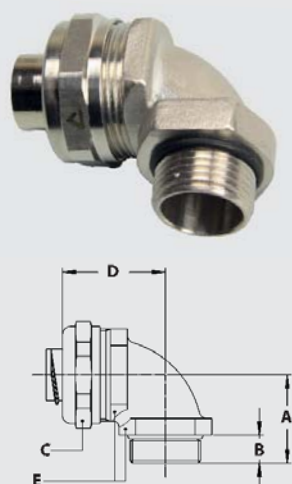
Construction: Stainless steel AISI-304, consisting of 4 parts (counter nut, clamping ring, ferrule and body).
Material: Counter nut and body are stainless steel AISI-304. Clamping ring is made from PA6 and the ferrule is made off nickel plated brass. The O-rings are from NBR rubber (black for ISO).
Temperature: -45 °C till +105 °C continuous
Protection class: IP 66 / 67, Nema 4X.
Colour: Metal



ISO straight fitting, compact, stainless steel AISI-304



Thread ISO	Sealtite Size (NW)	Min. Internal Bore (mm)	Dimensions in mm					Standard Package	Article Number	Weight (Kg/100)
			A	B	C	D	E			
M16 x 1,5	3/8"	10,6	31	10	26	-	24	10	712.016.9-NM	3,9
M20 x 1,5	3/8"	10,6	31	10	26	-	24	10	712.017.9-NM	4,0
M20 x 1,5	1/2"	14,0	32	10	29	-	27	10	712.020.9-NM	4,4
M25 x 1,5	3/4"	19,1	33	10	35	-	33	5	712.025.9-NM	6,6
M32 x 1,5	1"	24,3	36	12	45	-	42	5	712.032.9-NM	11,7
M40 x 1,5	1.1/4"	32,7	40	13	53	-	50	2	712.040.9-NM	16,0
M50 x 1,5	1.1/2"	37,4	46	14	62	-	58	2	712.050.9-NM	25,3
M63 x 1,5	2"	47,9	52	16	76	-	72	2	712.063.9-NM	38,6



ISO 90° fitting, compact, male, stainless steel AISI-304



Thread ISO	Sealtite Size (NW)	Min. Internal Bore (mm)	Dimensions in mm					Standard Package	Article Number	Weight (Kg/100)
			A	B	C	D	E			
M16 x 1,5	3/8"	10,6	26	10	26	31	22	10	712.916.9-NM	6,6
M20 x 1,5	3/8"	10,6	26	10	26	32	24	10	712.917.9-NM	7,9
M20 x 1,5	1/2"	14,0	28	10	29	34	27	10	712.920.9-NM	9,2
M25 x 1,5	3/4"	19,1	32	10	35	40	33	5	712.925.9-NM	16,2
M32 x 1,5	1"	24,3	40	12	45	49	42	5	712.932.9-NM	27,8
M40 x 1,5	1.1/4"	32,7	46	13	53	53	52	2	712.940.9-NM	40,1
M50 x 1,5	1.1/2"	37,4	52	14	62	57	60	2	712.950.9-NM	57,5
M63 x 1,5	2"	47,9	62	16	76	68	72	2	712.963.9-NM	90,6

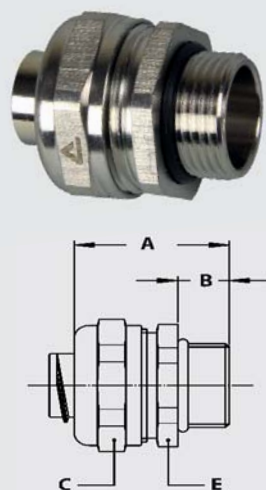
COMPACT FITTINGS, IP 66 / IP 67, STAINLESS STEEL AISI-316



Anaconda compact fittings, stainless steel AISI-316, for Anaconda Sealtite NMFG

The compact stainless steel AISI-316 fittings are specially designed to be used with Anaconda Sealtite NMFG. This Anaconda fitting is a universal fitting with shorter design and lower weight. The ferrule is adjusted for a better fit and easier to install. Because the fittings are made from stainless steel AISI-316 they offer superior corrosion protection in combination with a nice appearance.

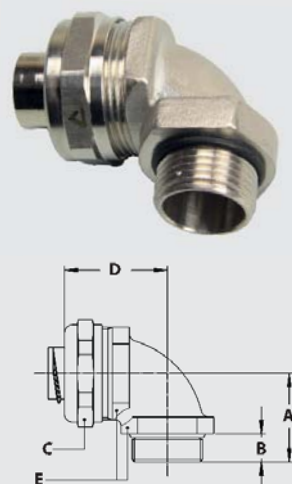
Construction: Stainless steel AISI-316, consisting of 4 parts (counter nut, clamping ring, ferrule and body).
Material: Counter nut and body are stainless steel AISI-316 whereas the ferrule is nickel plated brass. Clamping ring is made from PA6. The O-rings are from NBR rubber.
Temperature: -45 °C till +105 °C continuous
Protection class: IP 66 / IP 67, Nema 4X.
Colour: Metal



ISO straight fitting, compact, stainless steel AISI-316



Thread	Sealtite Size (NW)	Min. Internal Bore (mm)	Dimensions in mm					Standard Package	Article Number	Weight (Kg/100)
			A	B	C	D	E			
M16 x 1,5	3/8"	10,6	31	10	26	-	24	10	712.116.9-NM	3,9
M20 x 1,5	3/8"	10,6	31	10	26	-	24	10	712.117.9-NM	4,0
M20 x 1,5	1/2"	14,0	32	10	29	-	27	10	712.120.9-NM	4,4
M25 x 1,5	3/4"	19,1	33	10	35	-	33	5	712.125.9-NM	6,6
M32 x 1,5	1"	24,3	36	12	45	-	42	5	712.132.9-NM	11,7
M40 x 1,5	1.1/4"	32,7	40	13	53	-	50	2	712.140.9-NM	16,0
M50 x 1,5	1.1/2"	37,4	46	14	62	-	58	2	712.150.9-NM	25,3
M63 x 1,5	2"	47,9	52	16	76	-	72	2	712.163.9-NM	38,6



ISO 90° fitting, compact, male, stainless steel AISI-316

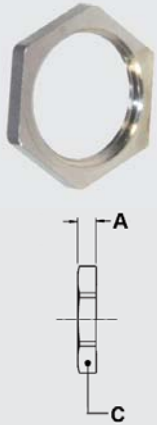


Thread	Sealtite Size (NW)	Min. Internal Bore (mm)	Dimensions in mm					Standard Package	Article Number	Weight (Kg/100)
			A	B	C	D	E			
M16 x 1,5	3/8"	10,6	26	10	26	31	22	10	712.516.9-NM	6,6
M20 x 1,5	3/8"	10,6	26	10	26	32	24	10	712.517.9-NM	7,9
M20 x 1,5	1/2"	14,0	28	10	29	34	27	10	712.520.9-NM	9,2
M25 x 1,5	3/4"	19,1	32	10	35	40	33	5	712.525.9-NM	16,2
M32 x 1,5	1"	24,3	40	12	45	49	42	5	712.532.9-NM	27,8
M40 x 1,5	1.1/4"	32,7	46	13	53	53	52	2	712.540.9-NM	40,1
M50 x 1,5	1.1/2"	37,4	52	14	62	57	60	2	712.550.9-NM	57,5
M63 x 1,5	2"	47,9	62	16	76	68	72	2	712.563.9-NM	90,6

ACCESSORIES, STAINLESS STEEL



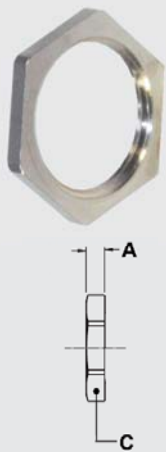
ISO lock nuts, stainless steel AISI-304



Thread	Sealrite Size (NW)	Min. Internal Bore (mm)	Dimensions in mm					Standard Package	Article Number	Weight (Kg/100)
			A	B	C	D	E			
M16 x 1,5	-	-	3,2	-	20	-	-	50	880.116.9	0,5
M20 x 1,5	-	-	3,6	-	24	-	-	50	880.120.9	0,7
M25 x 1,5	-	-	3,6	-	29	-	-	25	880.125.9	1,1
M32 x 1,5	-	-	4,6	-	35	-	-	25	880.132.9	2,4
M40 x 1,5	-	-	5,0	-	46	-	-	5	880.140.9	3,6
M50 x 1,5	-	-	5,0	-	60	-	-	5	880.150.9	5,4
M63 x 1,5	-	-	6,0	-	70	-	-	5	880.163.9	6,2



ISO locknut, stainless steel AISI-316



Thread	Sealrite Size (NW)	Min. Internal Bore (mm)	Dimensions in mm					Standard Package	Article Number	Weight (Kg/100)
			A	B	C	D	E			
M16 x 1,5	-	-	3,2	-	20	-	-	50	880.116.8	0,5
M20 x 1,5	-	-	3,6	-	24	-	-	50	880.120.8	0,7
M25 x 1,5	-	-	3,6	-	29	-	-	25	880.125.8	1,1
M32 x 1,5	-	-	4,6	-	35	-	-	25	880.132.8	2,4
M40 x 1,5	-	-	5,0	-	46	-	-	5	880.140.8	3,6
M50 x 1,5	-	-	5,0	-	60	-	-	5	880.150.8	5,4
M63 x 1,5	-	-	6,0	-	70	-	-	5	880.163.8	6,2



Ferrule for non-metallic conduit, nickel plated brass



Thread ISO	NMFG Size (NW)	Min. Internal Bore (mm)	Dimensions in mm					Standard Package	Article Number	Weight (Kg/100)
			A	B	C	D	E			
-	3/8"	10,6	-	-	-	-	-	10	815.011.6	0,8
-	1/2"	14,0	-	-	-	-	-	10	815.016.6	1,1
-	3/4"	19,1	-	-	-	-	-	5	815.021.6	1,7
-	1"	24,3	-	-	-	-	-	5	815.029.6	2,5



Ferrule for non-metallic conduit, nickel plated brass



Thread ISO	NMFG Size (NW)	Min. Internal Bore (mm)	Dimensions in mm					Standard Package	Article Number	Weight (Kg/100)
			A	B	C	D	E			
-	1.1/4"	32,7	-	-	-	-	-	2	815.036.6	4,6
-	1.1/2"	37,4	-	-	-	-	-	2	815.042.6	6,8
-	2"	47,9	-	-	-	-	-	2	815.048.6	10,7