

Anaconda stainless steel fittings for Multiflex UI.

The stainless steel Anaconda fittings can be used with all types of Anaconda Multiflex (except RWA). This Anaconda fitting offers superior corrosion protection in combination with a nice appearance. By using the UIG/UI connection set consisting of a special turned ferrule and clamping ring, a very high pull-out strength is achieved. The standard stainless steel fittings are AISI-303 or AISI-316. The connection set can be combined with all types of stainless steel Anaconda fittings and will be supplied separately.

Material & Construction:

Construction: Stainless steel (AISI-303 or AISI-316) fitting, consisting of 4 parts (counter nut, clamping ring, ferrule and body).

Material: Counter nut and body are stainless steel (AISI-303 or AISI-316), clamping ring and ferrule are nickel plated brass. Inserts are from PA6 (red for ISO metric, blue for Pg and white for NPT).

Temperature: -55 °C till +260 °C continuous.

Protection class: IP 40, (cable-hose fittings are IP 68 on the switchbox).

Colour: Metal.

ANACONDA
MULTIFLEX

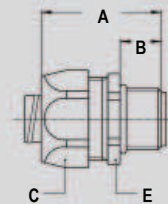
Connection set, nickel plated brass, for combination with Multiflex type UI.



Thread	UI	Min. Internal Bore (mm)	Fitting thread size			Standard Package	Article Number	Weight (Kg/100)
	Size (inch)		ISO	Pg	NPT			
-	5/16"	6,8	M16 x 1,5	Pg 9	1/2" NPT	10	817.210.9	2,2
-	3/8"	9,8	M16 x 1,5	Pg 11	1/2" NPT	10	817.213.9	2,0
-	1/2"	13,9	M20 x 1,5	Pg 16	1/2" NPT	10	817.216.9	2,4
-	3/4"	18,5	M25 x 1,5	Pg 21	3/4" NPT	5	817.220.9	3,8
-	1"	22,8	M32 x 1,5	Pg 29	1" NPT	5	817.226.9	4,0
-	1.1/4"	30,8	M40 x 1,5	Pg 36	1.1/4" NPT	2	817.235.9	9,8
-	1.1/2"	36,8	M50 x 1,5	Pg 42	1.1/2" NPT	2	817.240.9	12,4
-	2"	47,8	M63 x 1,5	Pg 48	2" NPT	2	817.250.9	18,2

FITTINGS FOR
TYPE UI
IP 40

ISO straight fitting, male, stainless steel (AISI-303) (including connection set).



Thread	UI	Min. Internal Bore (mm)	Dimensions in mm					Standard Package	Article Number	Weight (Kg/100)
	Size (inch)		A	B	C	D	E			
M16 x 1,5	5/16"	6,8	35	12	27	-	24	10	812.015.8	6,6
M20 x 1,5	5/16"	6,8	36	13	27	-	24	10	812.014.8	6,9
M16 x 1,5	3/8"	9,8	35	12	27	-	24	10	812.016.8	6,8
M20 x 1,5	3/8"	9,8	36	13	27	-	24	10	812.017.8	7,1
M20 x 1,5	1/2"	13,9	37	13	30	-	27	10	812.020.8	8,2
M25 x 1,5	3/4"	18,5	40	15	36	-	36	5	812.025.8	11,5
M32 x 1,5	1"	22,8	46	15	46	-	46	5	812.032.8	21,5
M40 x 1,5	1.1/4"	30,8	52	16	54	-	52	2	812.040.8	33,9
M50 x 1,5	1.1/2"	36,8	56	18	63	-	60	2	812.050.8	58,1