

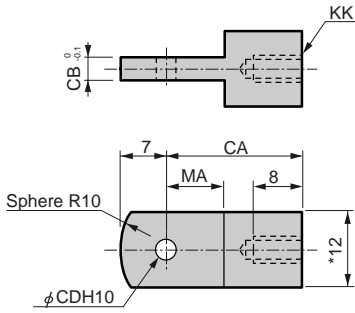
SCP*2 Series

SCP*2 Series common accessory

Dimensions

● Rod eye (I)

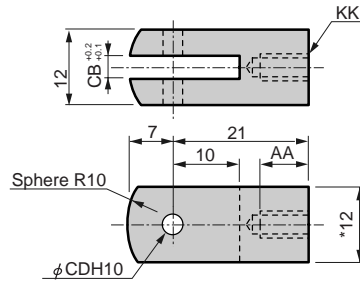
Material: Steel



Model no.	Tube bore size (mm)	CA	CB	CD	KK	MA	Weight (g)
P2-I-10	$\phi 10$	21	3.1	$3.2^{+0.048}_0$	M4	9	17
P2-I-16	$\phi 16$	25	6.4	$5^{+0.048}_0$	M5	14	21

● Rod clevis (Y)

Material: Steel

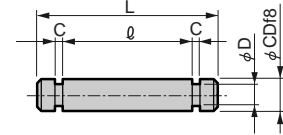


Note: Pin and snap ring are attached.

Model no.	AA	CB	CD	KK	Weight (g)
P2-Y-10	8	3.2	$3.2^{+0.048}_0$	M4	25
P2-Y-16	10	6.5	$5^{+0.048}_0$	M5	20

● Pin (P) for rod eye/clevis, bracket and clevis.

Material: Stainless steel

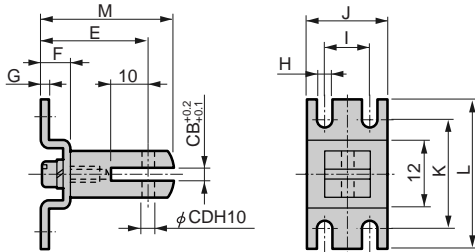


Model no.	Tube bore size (mm)	Applicable	C	D	CD	ϕ	L	Weight (g)
P2-P-10	10	Rod eye/clevis, bracket, clevis	0.6	2.5	$3.2^{+0.010}_{-0.028}$	13	17	1.2
P2-P-10Z		Clevis for Z				16	20	1.4
P2-P-16	16	Rod eye, bracket	0.7	4	$5^{+0.010}_{-0.028}$	13	18	3.0
P2-P-16A		Clevis	0.7	4	$5^{+0.010}_{-0.028}$	19	24	3.9

Note: For rod clevis type, a pin and a snap ring are attached to the product.

● Clevis bracket (B2)

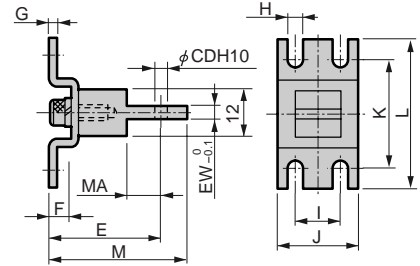
Material: Steel



Model no.	Tube bore size (mm)	CD	E	CB	F	G	H	I	J	K	L	M	Weight (g)
P2-B2-10	$\phi 10$	$3.2^{+0.048}_0$	29	3.2	8	2	4.2	12	22	30.2	40	36	44
P2-B2-16	$\phi 16$	$5^{+0.048}_0$	31	6.5	10	2.3	5.2	16	28	35.2	48	38	44

● Eye bracket (B1)

Material: Steel



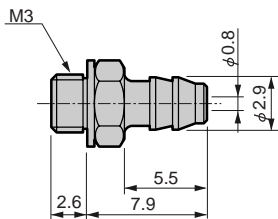
Model no.	Tube bore size (mm)	CD	E	EW	F	G	H	I	J	K	L	MA	Weight (g)
P2-B1-10	$\phi 10$	$3.2^{+0.048}_0$	29	3.1	8	2	4.2	12	22	30.2	40	36	37
P2-B1-16	$\phi 16$	$5^{+0.048}_0$	35	6.4	10	2.3	5.2	16	28	35.2	48	42	48

● Hose nipple for pencil shaped cylinder (sales unit 10 pcs./1 bag)

● Barbed joint



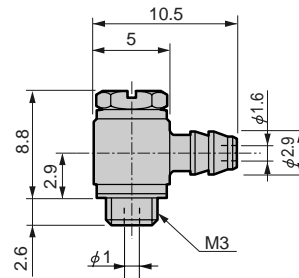
Straight/FTS4-M3



Effective sectional area 0.4 mm² Applicable tube O.D. $\phi 3.2, \phi 4$



Elbow/FTL4-M3

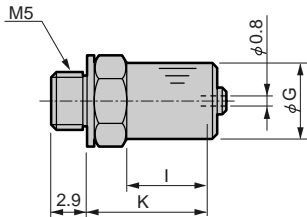


Effective sectional area 0.4 mm² Applicable tube O.D. $\phi 3.2, \phi 4$

● Clamp joint

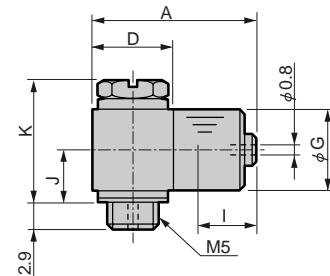


Straight/FCS



Model no.	Applicable tube O.D.	G	I	K	Weight (g)	Effective sectional area / (mm ²)
FCS4-M5P	$\phi 4$	7	4.3	11.7	3.2	0.35
FCS6-M5P	$\phi 6$	9	5	12.4	4.5	0.35

Elbow/FCL



Model no.	Applicable tube O.D.	A	D	G	I	J	K	Weight (g)	Effective sectional area (mm ²)
FCL4-M5P	$\phi 4$	16.1	8	7	4.3	5.1	11.6	6.8	0.35
FCL6-M5P	$\phi 6$	17.8	9	9	5	6.1	13.6	10.1	0.35