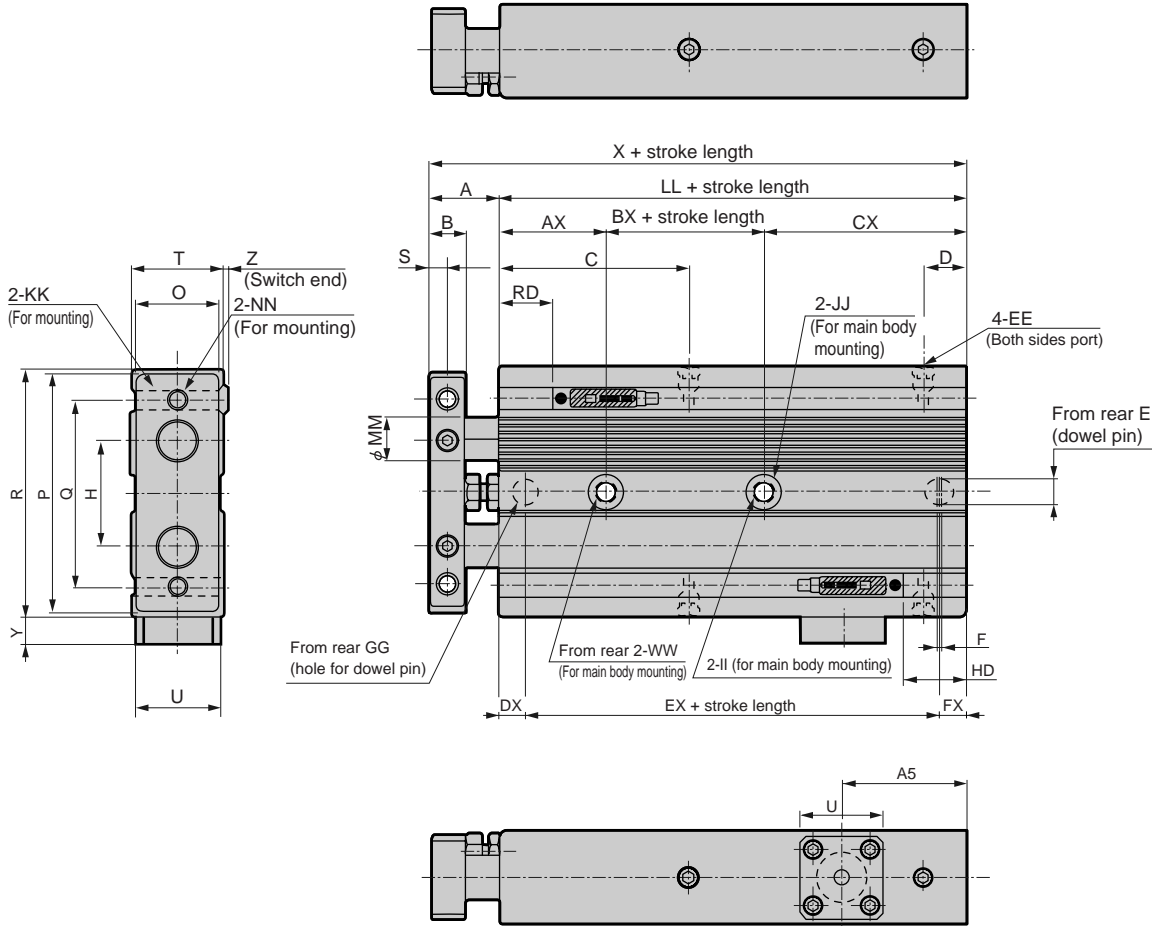




Dimensions (φ16 to φ32)

● Position locking type (Q) head side position locking (H), piping port position 180° change (O)



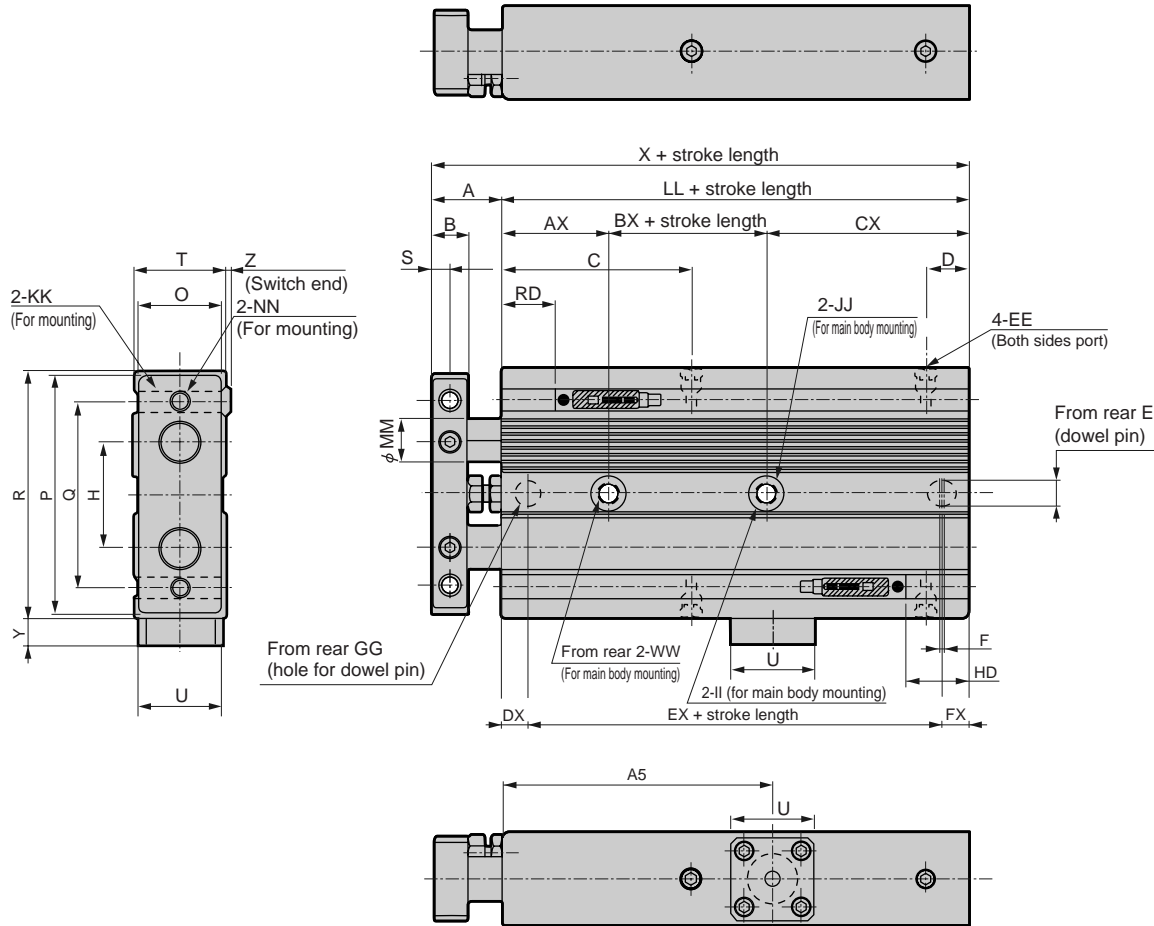
Note 1: Note that the HD and RD dimensions at 10 stroke may differ from these dimensions due to the various settings.
 Note 2: Refer to page 1910 for 2-color indicator, HD/RD dimensions and projection dimensions of the switch with preventive maintenance output.
 Note 3: When the counter bore surface (JJ) is the mounting surface, this cylinder has a step which could cause the cylinder to tilt. In this case, change the port position or use the option with port position changed 180° (O) so that the counter bore surface is not the mounting surface.

Symbol	Q-H basic dimensions																	
	A	B	C	D	E	EE	F	GG	H	II	JJ	KK	LL	MM	NN	O	P	
φ 16	16	8	43	9.5	6 ^{+0.07} / _{+0.02} depth 6	M5	1	6 ^{+0.07} / _{+0.02} depth 6	25	4.3	8 spot face depth 4.4	M5 penetrating	96	10	M5 penetrating	19	52	
φ 20	20	10	46	9.5	6 ^{+0.07} / _{+0.02} depth 6	M5	1	6 ^{+0.07} / _{+0.02} depth 6	28	5.2	9.5 spot face depth 5.4	M5 penetrating	105	12	M5 penetrating	24	60	
φ 25	22	12	44	10.5	6 ^{+0.07} / _{+0.02} depth 6	M5	1	6 ^{+0.07} / _{+0.02} depth 6	34	6.3	11 spot face depth 6.5	M6 penetrating	105	14	M6 penetrating	30	70	
φ 32	22	12	56	11	6 ^{+0.07} / _{+0.02} depth 6	Rc1/8	1	6 ^{+0.07} / _{+0.02} depth 6	44	6.3	11 spot face depth 6.5	M6 penetrating	121	16	M6 penetrating	36	94	
Symbol	K0/K5/K2/K3																	
	Q	R	S	T	U	WW	X	Y	AX	BX	CX	DX	EX	FX	Z	A5	HD	RD
φ 16	45	58	4	21	19	M5 depth 6	112	6	24	26	46	8	80	8	0.5	28	37	39.5
φ 20	50	62	5	27	23	M6 depth 8	125	7.5	24	33	48	9	87	9	0.5	25	40.5	45
φ 25	60	72	6	33	23	M8 depth 8	127	7.5	24	33	48	9	87	9	0.5	28	41.5	43.5
φ 32	75	96	6	38	23	M8 depth 8	143	7.5	24	47	50	9	103	9	0.5	27.5	45.5	55.5

Dimensions (φ16 to φ32)



- Position locking type (Q) head side position locking (R), piping port position 180° change (O)



Note 1: Note that the HD and RD dimensions at 10 stroke may differ from these dimensions due to the various settings.

Note 2: Refer to page 1910 for 2-color indicator, HD/RD dimensions and projection dimensions of the switch with preventive maintenance output.

Note 3: When the counter bore surface (JJ) is the mounting surface, this cylinder has a step which could cause the cylinder to tilt. In this case, change the port position or use the option with port position changed 180° (O) so that the counter bore surface is not the mounting surface.

Symbol	Q-R basic dimensions																	
Bore size (mm)	A	B	C	D	E	EE	F	GG	H	II	JJ	KK	LL	MM	NN	O	P	
φ 16	16	8	43	9.5	6 ^{+0.07} / _{+0.02} depth 6	M5	1	6 ^{+0.07} / _{+0.02} depth 6	25	4.3	8 spot face depth 4.4	M5 penetrating	96	10	M5 penetrating	19	52	
φ 20	20	10	46	9.5	6 ^{+0.07} / _{+0.02} depth 6	M5	1	6 ^{+0.07} / _{+0.02} depth 6	28	5.2	9.5 spot face depth 5.4	M5 penetrating	105	12	M5 penetrating	24	60	
φ 25	22	12	44	10.5	6 ^{+0.07} / _{+0.02} depth 6	M5	1	6 ^{+0.07} / _{+0.02} depth 6	34	6.3	11 spot face depth 6.5	M6 penetrating	105	14	M6 penetrating	30	70	
φ 32	22	12	56	11	6 ^{+0.07} / _{+0.02} depth 6	Rc1/8	1	6 ^{+0.07} / _{+0.02} depth 6	44	6.3	11 spot face depth 6.5	M6 penetrating	121	16	M6 penetrating	36	94	
Symbol																K0/K5/K2/K3		
Bore size (mm)	Q	R	S	T	U	WW	X	Y	AX	BX	CX	DX	EX	FX	Z	A5	HD	RD
φ 16	45	58	4	21	19	M5 depth 6	112	6	24	26	46	8	80	8	0.5	61.5	7	69.5
φ 20	50	62	5	27	23	M6 depth 8	125	7.5	24	33	48	9	87	9	0.5	61.5	10.5	75
φ 25	60	72	6	33	23	M8 depth 8	127	7.5	24	33	48	9	87	9	0.5	61.5	11.5	73.5
φ 32	75	96	6	38	23	M8 depth 8	143	7.5	24	47	50	9	103	9	0.5	72.5	15.5	85.5

- SCP*2
- CMK2
- CMA2
- SCM
- SCG
- SCA2
- SCS
- CKV2
- CA/OV2
- SSD
- CAT
- MDC2
- MVC
- SMD2
- MSD*
- FC*
- STK
- ULK*
- JSK/M2
- JSG
- JSC3
- USSD
- USC
- JSB3
- LMB
- STG
- STS/L
- LCS
- LCG
- LCM
- LCT
- LCY
- STR2**
- UCA2
- HCM
- HCA
- SRL2
- SRG
- SRM
- SRT
- MRL2
- MRG2
- SM-25
- CAC3
- UCAC
- RCC2
- MFC
- SHC
- GLC
- Ending

Twin rod cylinder
Combined functions