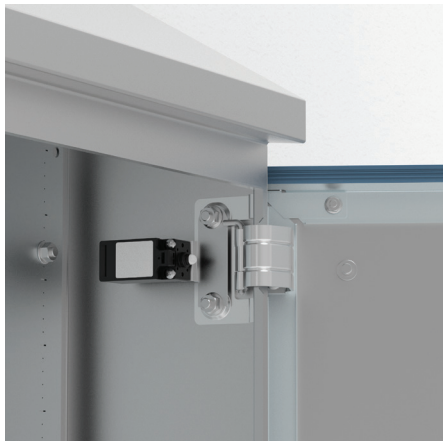


HDSW

Door switch for HDW



Description: Door switch to activate any electrical device (lighting, signalling, alarms, etc.) designed for HDW range of wall mounted enclosures. No machining is required.

Switch capacity: 3 A / 240 V.

Approvals: CE, cULus listed.

Pack quantity: 1 piece with mounting instructions.

Additional information: Minimum enclosure depth 210 mm.

WARNING		
Table Id	SysId	Message
table	186189	Failed to find Table Definition

WARNING		
Table Id	SysId	Message
table	186189	Failed to find Table Definition

WARNING		
Table Id	SysId	Message
table	186189	Failed to find Table Definition