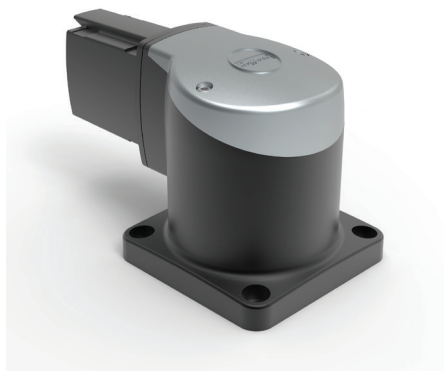


S2MSJ

Set up joint



Additional information: Set-Up Joint mounts suspension system to a horizontal surface. The arm can be rotated or turned 300 degrees. Includes safety stop and maintenance-free bearing. RAL 9005 black finish. Die-cast aluminum construction. Includes removable cable access cover, installation instructions, gaskets and tube setscrews. Surface mounting hardware is not provided.

Note: The maximum weight a medium swing arm can support depends on the length of the arm and the system structure. See diagram in the mounting instructions.

Item no.

S2MSJ
