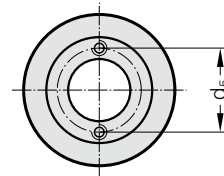
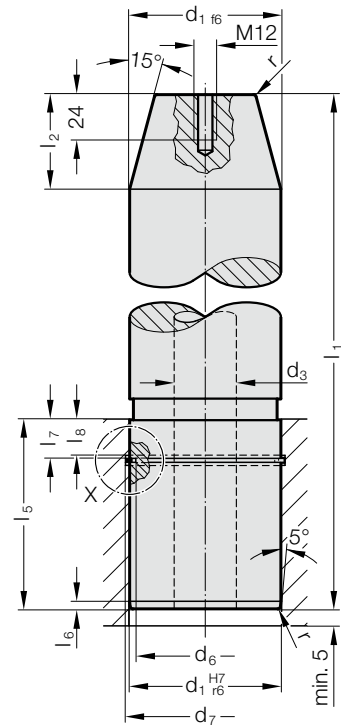
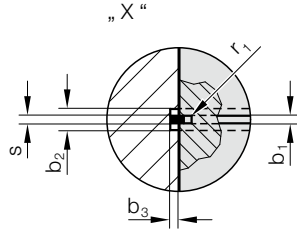


GUIDE PILLAR WITH PILOT TAPPER AND GROOVE, TO MERCEDES-BENZ STANDARD



Mounting example

2022.12.



Material:

Steel, surface hardened
Surface hardness: 60 + 4 HRC, Hardness penetration 1,5 + 1 mm

Execution:

ground
ø d₁ = 80 without central hole with 1 lifting thread M12
from ø d₁ = 100 with central hole (through) and with 2 lifting threads M8

Note:

- Secure with snap ring 2061.48.
- Guide pillar is recommended to be used only with guide elements with solid lubricant.
- ☞ Matching guide combinations, see selection matrix at the beginning of chapter D.
- ☞ Assembly guide lines / Dimensional requirements and tolerances at the end of chapter D.

2022.12. Guide pillar with pilot taper and groove, to Mercedes-Benz Standard

d ₁	80	100	125	160
d ₃	-	50	65	95
d ₅	-	62	82	119
d ₆	71.4	89.9	114.9	148.9
r	3	3	4	4
r ₁	1.05	1.3	1.3	1.3
l ₂	50	50	50	50
l ₅	100	125	140	180
l ₆	4	4	5	5
l ₇	21	31	31	31
l ₈	20	30	30	30
b ₁	2.1	2.6	2.6	2.6
b ₂	4.2	5.2	5.2	5.2
l ₁				
280	●			
315	●			
355	●	●		
400	●	●	●	
450	●	●	●	
500			●	●
560				●

Ordering Code (example):

Guide pillar with pilot taper and groove,
to Mercedes-Benz Standard = 2022.12.
Diameter of conduit d₁ 125 mm = 125.
Length l₁ 355 mm = 355
Order No = 2022.12. 125. 355