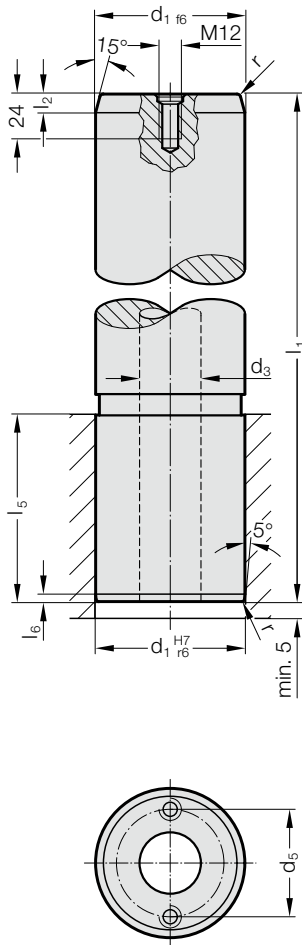


GUIDE PILLAR FOR LARGE TOOLS, DIN 9833/ISO 9182-3

2022.19.



Material:

Steel, surface hardened

Surface hardness: 60 + 4 HRC, Hardness penetration 1,5 + 1 mm

Execution:

ground

up to $\varnothing d_1 = 80$ without central hole

by $\varnothing d_1 = 80$ with 1 lifting thread M12

from $\varnothing d_1 = 100$ with central hole (through) and with 2 lifting threads M12

Note:

Guide pillar is recommended to be used only with guide elements with solid lubricant.

☞ Matching guide combinations, see selection matrix at the beginning of chapter D.

☞ Assembly guide lines / Dimensional requirements and tolerances at the end of chapter D.

2022.19. Guide pillar for large tools, DIN 9833/ISO 9182-3

d_1	25	32	40	50	63	80	100	125	160
d_3	-	-	-	-	-	-	50	65	95
d_5	-	-	-	-	-	-	72	90	132
r	2	2	2	2.5	2.5	3	3	4	4
l_2	8	8	8	10	10	10	10	12	12
l_5	40	45	56	70	80	100	125	140	180
l_6	4	4	4	4	4	4	4	5	5
l_1									
125	●	●							
140	●	●							
160	●	●	●	●					
180	●	●	●	●	●				
200	●	●	●	●	●				
224	●	●	●	●	●	●			
250		●	●	●	●	●	●		
280			●	●	●	●	●	●	
315				●	●	●	●	●	●
355				●	●	●	●	●	●
400					●	●	●	●	●
450						●	●	●	●
500						●	●	●	●
560									●

Ordering Code (example):

Guide pillar for large tools, DIN 9833/ISO 9182-3	=	2022.19.
Diameter of conduit d_1	63 mm	= 063.
Length l_1	180 mm	= 180
Order No	=	2022.19. 063. 180