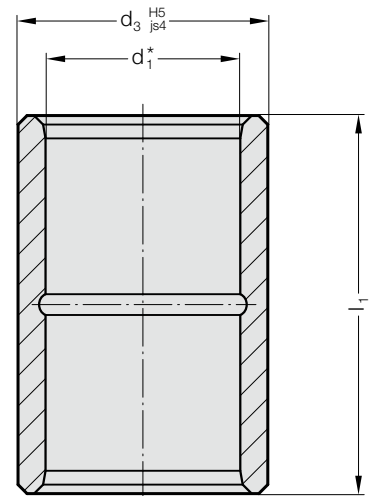


GUIDE BUSH, SINTERED FERRITE CARBONITRIDED WITH LONG-TERM LUBRICATION, ISO 9448-2



2051.32.



Material:

Sintered ferrite of high purity, carbonitrided, long-term lubrication

Execution:

Running surfaces and mounting diameter precision ground.
Oil groove(s) not until diameter $d_1 = 15$ mm.

Slip-Fit Bonding:

The position of the bearing is given by push fit holes tolerance H5. The adhesive (order no. 281.648) provides optimum push retention whilst offering the following **advantages:**

- high accuracy and stiffness
- no problems to find position when changing bushings

We do not recommend to press fit for the same reasons mentioned above.

Note:

- ☞ Notes on sliding type guides at the beginning of chapter D.
- *☞ Bearing clearance see pairing classification at the beginning of chapter D.
- ☞ Matching guide combinations, see selection matrix at the beginning of chapter D.
- ☞ Assembly guide lines / Dimensional requirements and tolerances at the end of chapter D.
- ø 8 - ø 12 not available in tolerance range red = .30.
- Tolerance range:
yellow = .10; green = .20; red = .30

2051.32. Guide bush, sintered ferrite carbonitrided with long-term lubrication, ISO 9448-2

d_1	8	11 12	15 16	19 20	24 25	30 32	38 40	48 50	60 63	80
d_3	13.7	22	28	32	40	48	58	70	85	95.7
l_1										
15	●									
23		●			●					
30		●	●	●	●	●	●			
37		●	●	●	●	●	●	●		
47			●	●	●	●	●	●		
60			●	●	●	●	●	●	●	●
77				●	●	●	●	●	●	●
95						●	●	●	●	
110										●
120							●	●	●	●

Ordering Code (example):

Guide bush, sintered ferrite carbonitrided with long-term lubrication, ISO 9448-2

		= 2051.32.
Diameter of conduit d_1	30 mm	= 030.
Length l_1	30 mm	= 030.
Classification TOL	yellow	= 10
Order No		= 2051.32. 030. 030. 10