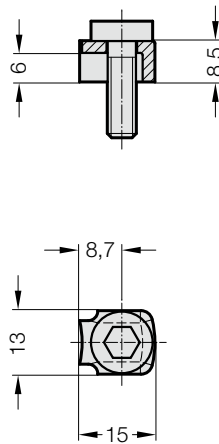


SCREW CLAMP WITH SCREW



207.45

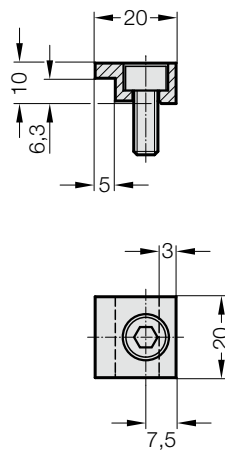


Screw clamp

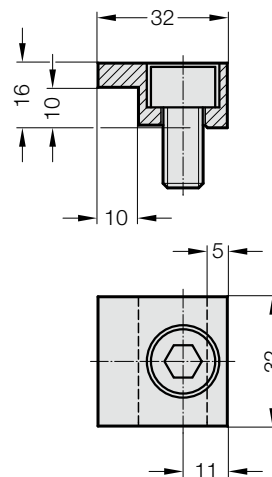
- incl. screw
- steel punched bent component
- clamping height 6 - 6,3 mm
- M6 screw



2072.45.10



2072.45.16

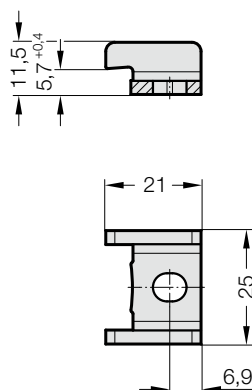


Screw clamp

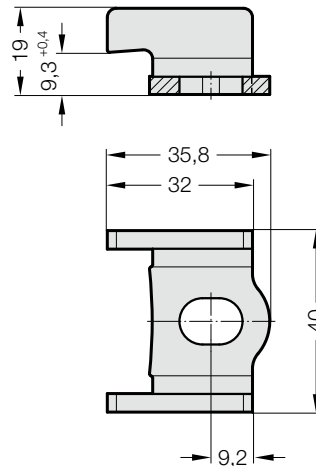
- incl. screw
- 2072.45.10
- Steel, milled
- Clamping height 6 - 6,3 mm
- M6 screw
- 2072.45.16
- Steel, milled
- Clamping height 10 mm
- M10 screw



2072.45.55.12



2072.45.55.14



Screw clamp

- without screw
- 2072.45.55.12
- Steel plate
- Clamping height 6 - 6.3 mm
- Screw M6
- 2072.45.55.14
- Steel plate
- Clamping height 10 mm
- Screw M10