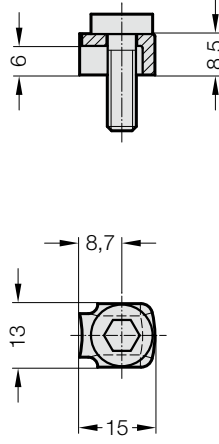


YATAKLAMA ELEMANLARI İÇİN SIKMA PABUÇLARI



207.45

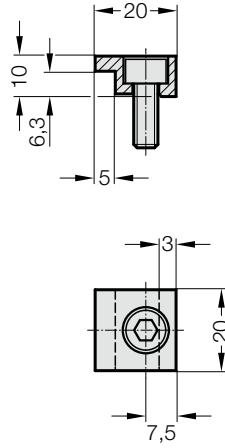


Sıkma Pabucu

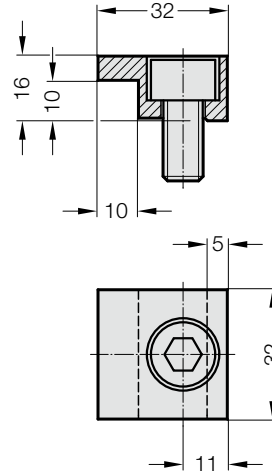
- Vida dahil
- Çelik, bükülmüş
- kenetleme yüksekliği 6 - 6,3 mm
- M6 vida



2072.45.10



2072.45.16

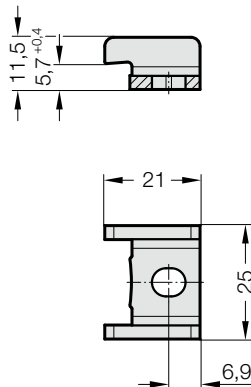


Sıkma Pabucu

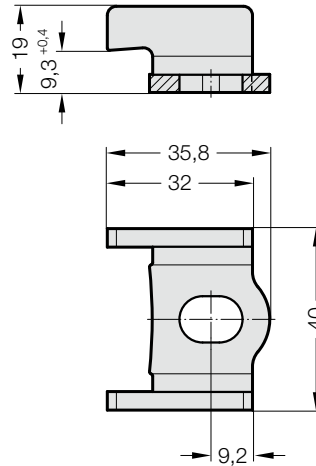
- Vida dahil
2072.45.10
- Çelik, işlenmiş
- kenetleme yüksekliği 6 - 6,3 mm
- M6 vida
2072.45.16
- Çelik, işlenmiş
- kenetleme yüksekliği 10 mm
- M10 vida



2072.45.55.12



2072.45.55.14



Sıkma Pabucu

- cıvatasız
2072.45.55.12
- Çelik sac
- kenetleme yüksekliği 6 - 6,3 mm
- Cıvata M6
2072.45.55.14
- Çelik sac
- kenetleme yüksekliği 10 mm
- Cıvata M10