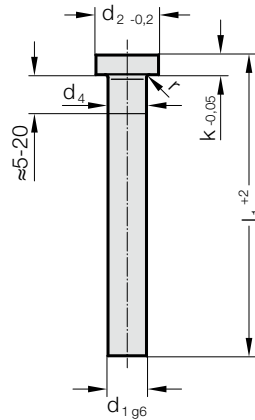


EJECTOR PIN, NITRIDED, DIN 1530-1 SHAPE A



237.8.



Material:

NWA
 Order No 237.8.
 Hardness:
 Shaft* ≥ 950 HV 0,3
 Head 45 ± 5 HRC
 Core strength > 1400 N/mm²

Description of FIBRO materials for tool and die components see at the beginning of Chapter E.

Execution:

Shaft precision ground, nitrided.
 Head hot dipped and tempered.
 The compression thickening below the head is omitted depending on the manufacturing process.

d_4 : For $d_1 < 5$ mm, $d_4 = d_1 + 0,03$
 For $d_1 \geq 5$ mm, $d_4 = d_1 + 0,04$
 for $d_1 \geq 18$ mm, $d_4 = d_1 + 0,07$

237.8. Ejector pin, nitrided, DIN 1530-1 Shape A

d_1	d_2	k	r	l_1	100	125	160	200	250	315	400	500	630	800
1.5	3	1.5	0.2		●	●	●	●						
2	4	2	0.2		●	●	●	●	●					
2.2	4	2	0.2		●	●	●	●						
2.4	5	2	0.2		●	●	●	●	●	●				
2.5	5	2	0.3		●	●	●	●	●	●				
2.7	5	2	0.3		●	●	●	●						
2.9	5	2	0.3		●	●	●	●	●	●				
3	6	3	0.3		●	●	●	●	●	●	●	●		
3.2	6	3	0.3		●	●	●	●	●	●	●	●		
3.4	6	3	0.3		●	●	●	●	●	●				
3.5	7	3	0.3		●	●	●	●	●	●	●			
3.7	7	3	0.3		●	●	●	●	●	●	●			
3.9	7	3	0.3		●	●	●	●	●	●				
4	8	3	0.3		●	●	●	●	●	●	●	●		
4.2	8	3	0.3		●	●	●	●	●	●	●			
4.4	8	3	0.3		●	●	●	●	●	●				
4.5	8	3	0.3		●	●	●	●	●	●	●			
4.7	8	3	0.3		●	●	●	●	●	●				
4.9	8	3	0.3		●	●	●	●	●	●				
5	10	3	0.3		●	●	●	●	●	●	●	●	●	●
5.2	10	3	0.3		●	●	●	●	●	●	●	●	●	●
5.4	10	3	0.3		●	●	●	●	●	●				
5.5	10	3	0.3		●	●	●	●	●	●	●	●		
5.7	10	3	0.3		●	●	●	●	●	●				
5.9	10	3	0.3		●	●	●	●	●	●				

Ordering Code (example):

Ejector pin, nitrided, DIN 1530-1 Shape A	=237.8.
Shaft diameter d_1	6.2 mm = 0620.
Length l_1	100 mm = 100
Order No	=237.8. 0620. 100

EJECTOR PIN, NITRIDED, DIN 1530-1 SHAPE A

Material:

NWA
 Order No 237.8.
 Hardness:
 Shaft* ≥ 950 HV 0,3
 Head 45 ± 5 HRC
 Core strength > 1400 N/mm²

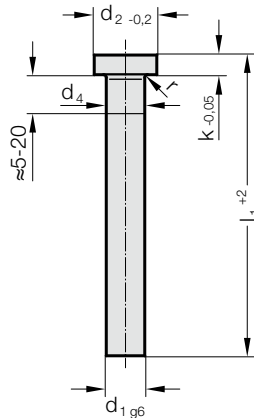
Description of FIBRO materials for tool and die components see at the beginning of Chapter E.

Execution:

Shaft precision ground, nitrated.
 Head hot dipped and tempered.
 The compression thickening below the head is omitted depending on the manufacturing process.

d_4 : For $d_1 < 5$ mm, $d_4 = d_1 + 0,03$
 For $d_1 \geq 5$ mm, $d_4 = d_1 + 0,04$
 for $d_1 \geq 18$ mm, $d_4 = d_1 + 0,07$

237.8.



237.8. Ejector pin, nitrided, DIN 1530-1 Shape A

d_1	d_2	k	r	l_1	100	125	160	200	250	315	400	500	630	800	1000
6	12	5	0.5		●	●	●	●	●	●	●	●	●	●	
6.2	12	5	0.5		●	●	●	●	●	●	●	●	●	●	
6.5	12	5	0.5		●	●	●	●	●	●	●	●	●	●	
6.7	12	5	0.5		●	●	●	●	●	●	●	●	●	●	
6.9	12	5	0.5		●	●	●	●	●	●	●	●	●	●	
7	12	5	0.5		●	●	●	●	●	●	●	●	●	●	
7.2	12	5	0.5		●	●	●	●	●	●	●	●	●	●	
7.8	12	5	0.5		●	●	●	●	●	●	●	●	●	●	
8	14	5	0.5		●	●	●	●	●	●	●	●	●	●	●
8.2	14	5	0.5		●	●	●	●	●	●	●	●	●	●	●
8.4	14	5	0.5		●	●	●	●	●	●	●	●	●	●	●
8.5	14	5	0.5		●	●	●	●	●	●	●	●	●	●	●
9	14	5	0.5		●	●	●	●	●	●	●	●	●	●	●
9.7	14	5	0.5		●	●	●	●	●	●	●	●	●	●	●
10	16	5	0.5		●	●	●	●	●	●	●	●	●	●	●
10.2	16	5	0.5		●	●	●	●	●	●	●	●	●	●	●
10.5	16	5	0.5		●	●	●	●	●	●	●	●	●	●	●
11	16	5	0.5		●	●	●	●	●	●	●	●	●	●	●
12	18	7	0.8		●	●	●	●	●	●	●	●	●	●	●
12.2	18	7	0.8		●	●	●	●	●	●	●	●	●	●	●
12.5	18	7	0.8		●	●	●	●	●	●	●	●	●	●	●
14	22	7	0.8		●	●	●	●	●	●	●	●	●	●	●
16	22	7	0.8		●	●	●	●	●	●	●	●	●	●	●
18	24	7	0.8		●	●	●	●	●	●	●	●	●	●	●
20	26	8	1		●	●	●	●	●	●	●	●	●	●	●
25	32	10	1		●	●	●	●	●	●	●	●	●	●	●
32	40	10	1		●	●	●	●	●	●	●	●	●	●	●

Ordering Code (example):

Ejector pin, nitrided, DIN 1530-1 Shape A =237.8.
 Shaft diameter d_1 6.2 mm = 0620.
 Length l_1 100 mm = 100
 Order No =237.8. 0620. 100