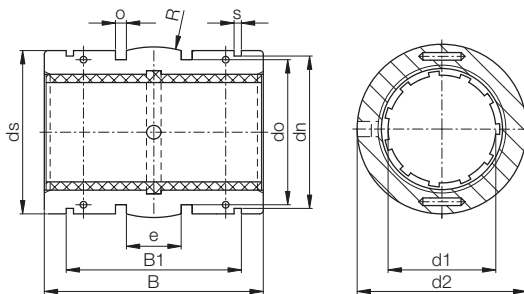




DryLin® R | Linear Plain Bearing TJUM-03 | mm



Structure – part no.
TJUM-03-16



- Diameter
- Self-aligning
- Metric
- Liner
- iglidur®J
- Split

mm

DryLin® R

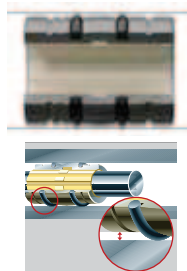
Phone +49 - 22 03 - 96 49-145
Fax +49 - 22 03 - 96 49-334

igus® GmbH
51147 Cologne

Internet www.igus.de
E-mail info@igus.de

Special properties

- Split aluminium housing with spherical area on the outer diameter for self aligning purposes
- Dimensions otherwise equivalent to standard recirculating ball bearings
- Fitted as standard with iglidur® J liners
- Recommended housing bore H7
- Recommended tolerance for the shaft: h6–h10
(see igus® shafts ► **chapter 65**)
- Secured by DIN 471 or 472 circlips (not included in delivery)
- Also available with following liners:
→ JUM-11: with reduced maximum bearing clearance, material iglidur® J – Example: TJUM-13-16



* According to igus® testing method

► **Page 64.37**

Available from stock



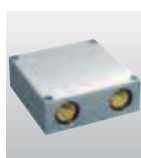
Inner Diameter, Load Capacity and Weight

Part No.	Shaft Ø [mm]	Tolerance* Bearing Inner Diameter [mm]	pmax. [N] Dynamic Load P = 5 MPa	pmax. [N] Static Load P = 35 MPa	Weight [g]
TJUM-03-10	10	0,030-0,092	725	5075	11
TJUM-03-12	12	0,030-0,097	960	6720	17
TJUM-03-16	16	0,030-0,097	1440	10080	23
TJUM-03-20	20	0,030-0,103	2250	15750	44
TJUM-03-25	25	0,030-0,103	3625	25375	92
TJUM-03-30	30	0,040-0,124	5100	35700	145
TJUM-03-40	40	0,040-0,124	8000	56000	311
TJUM-03-50	50	0,050-0,146	12500	87500	542

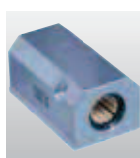
Dimensions [mm]

Part No.	d1 [mm]	d2 [mm]	B [mm]	B1 [mm]	s [mm]	dn [mm]	ds [mm]	do [mm]	o [mm]	e [mm]	R [mm]
			h10	H10	H10	h10	h10		0,4		
TJUM-03-10	10	19 -0,020-0,040	28,9	21,8	1,30	17,5	18,5	15,4	1,86	5,0	13,0
TJUM-03-12	12	22 -0,020-0,040	31,9	22,8	1,30	20,5	21,5	18,4	1,86	6,0	18,0
TJUM-03-16	16	26 -0,020-0,040	35,9	24,9	1,30	24,2	25,5	20,4	2,86	8,0	32,0
TJUM-03-20	20	32 -0,020-0,045	44,8	31,5	1,60	29,6	31,5	26,4	2,86	10,0	50,0
TJUM-03-25	25	40 -0,030-0,055	57,8	44,1	1,85	36,5	39,5	34,4	2,86	12,5	39,0
TJUM-03-30	30	47 -0,030-0,055	67,8	52,1	1,85	43,5	46,0	41,4	2,86	15,0	57,0
TJUM-03-40	40	62 -0,030-0,060	79,8	60,9	2,15	57,8	61,0	56,4	2,86	20,0	100,0
TJUM-03-50	50	75 -0,030-0,060	99,8	78,0	2,65	70,5	74,0	69,4	2,86	25,0	157,0

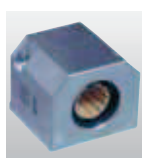
Plain bearings of series TJUM-03 can be combined with:



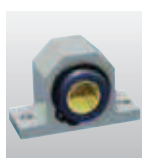
RQA-03:
► P. 64.38



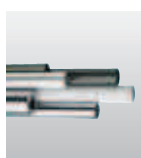
RTA-03:
► P. 64.40



RGA-03:
► P. 64.42



RGAS-03:
► P. 64.44



Shafts:
► Chapter 65