

## dryspin® | Product range

Corrosion-resistant, made from material 1.4301 – Precision / nominal dimension -0.1



Order key

Part number	Thread dimension	Options
-------------	------------------	---------

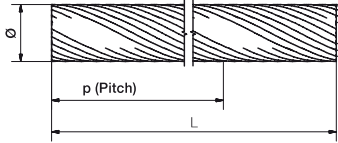
**DST-LS-10x50-R-xx-ES**

dryspin® technology	Lead screw	Outer Ø [mm]	Pitch P [mm]	Hand of rotation	<b>Length</b>	Lead screw material
------------------------	------------	--------------	--------------	------------------	---------------	------------------------

Options

Length in [mm]

Any value up to maximum, see product range



### Dimensions [mm]

Thread	Ø	Pitch P	Max. length L	Part No.
Ds6.35x2.54	6.35	2.54	1,000	DST-LS-6.35x2.54-R-ES
Ds6.35x5.08	6.35	5.08	1,500	DST-LS-6.35x5.08-R-ES
Ds6.35x12.7	6.35	12.7	1,500	DST-LS-6.35x12.7-R-ES
Ds6.35x25.4	6.35	25.4	1,000	DST-LS-6.35x25.4-R-ES
Ds10x12	10	12	3,000	DST-LS-10x12-R-ES
Ds10x25	10	25	3,000	DST-LS-10x25-R-ES
Ds10x25	10	25	3,000	DST-LS-10x25-L-ES
Ds10x50	10	50	3,000	DST-LS-10x50-R-ES
Ds10x50	10	50	3,000	DST-LS-10x50-L-ES
Ds14x25	14	25	3,000	DST-LS-14x25-R-ES
Ds14x30	14	30	3,000	DST-LS-14x30-R-ES
Ds16x35	16	35	3,000	DST-LS-16x35-R-ES
Ds18x40	18	40	3,000	DST-LS-18x40-R-ES
Ds18x80	18	80	3,000	DST-LS-18x80-R-ES
Ds20x60	20	60	3,000	DST-LS-20x60-R-ES
Ds20x90	20	90	3,000	DST-LS-20x90-R-ES

## dryspin® | Product range

Cylindrical design, made from iglidur® J

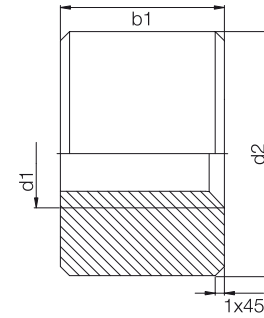


Order key

Part number	d2	b1	Thread
-------------	----	----	--------

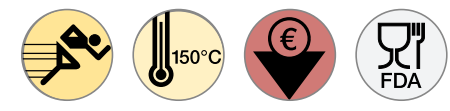
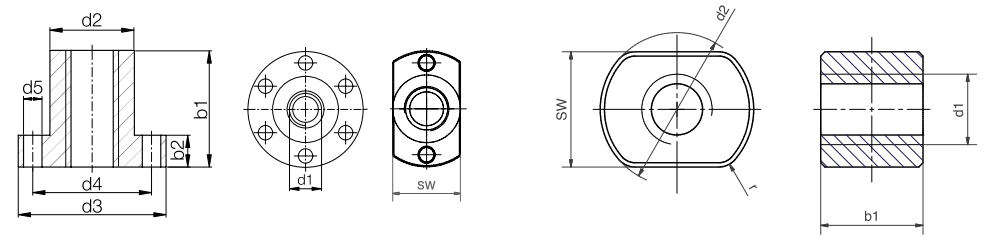
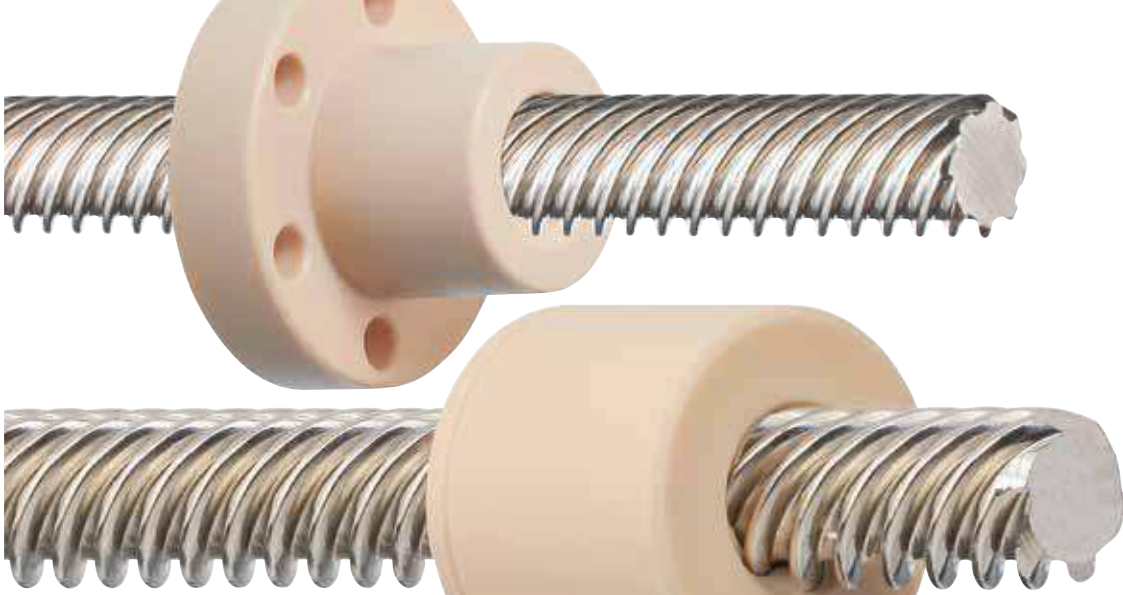
**DST-JSRM-1413DS10x12**

dryspin® technology	igidur® J	Form S	Right-hand thread	Metric	Outer Ø [mm]	Length [mm]	Thread type	Thread Ø [mm]	Pitch P [mm]
------------------------	-----------	--------	-------------------	--------	--------------	-------------	-------------	---------------	--------------



### Technical data and dimensions [mm]

Thread	d1	d2	b1	Effective supporting surface [mm²]	Max. stat. F axial [N]	Part No.
Ds6.35x2.54	6.35	14	13	172	152	DST-JSRM-1413DS6.35x2.54
Ds6.35x5.08	6.35	14	13	201	152	DST-JSRM-1413DS6.35x5.08
Ds6.35x12.7	6.35	14	13	–	–	DST-JSRM-1413DS6.35x12.7
Ds6.35x25.4	6.35	14	13	75	152	DST-JSRM-1413DS6.35x25.4
Ds10x12	10	22	20	302	755	DST-JSRM-2220DS10x12
Ds10x25	10	22	20	249	623	DST-JSRM-2220DS10x25
Ds10x25	10	22	20	249	623	DST-JSLM-2220DS10x25
Ds10x50	10	22	20	146	365	DST-JSRM-2220DS10x50
Ds10x50	10	22	20	146	365	DST-JSLM-2220DS10x50
Ds14x25	14	30	27	448	1,120	DST-JSRM-3027DS14x25
Ds14x30	14	30	27	373	932	DST-JSRM-3027DS14x30
Ds16x35	16	36	32	680	1,700	DST-JSRM-3632SD16x35
Ds18x40	18	40	36	802	2,005	DST-JSRM-4036DS18x40
Ds18x80	18	40	36	601	1,503	DST-JSRM-4036DS18x80
Ds20x60	20	45	40	1,023	2,557	DST-JSRM-4540DS20x60
Ds20x90	20	45	40	682	1,705	DST-JSRM-4540DS20x90



**Verfügbare Werkstoffe Available materials**

- J** Hohe Geschwindigkeiten High speeds
- J350** Temperaturen Temperature bis zu up to +150°C
- R** Günstig cost-effective
- A180** FDA-konform FDA-compliant

[www.igus.de/dryspin](http://www.igus.de/dryspin)  
[www.igus.eu/dryspin](http://www.igus.eu/dryspin)

Lieferbar Available  
**ab Lager from stock**

**Optionen Options**

R = Rechtsgewinde Right-hand thread  
L = Linksgewinde Left-hand thread

# ... 2,5-fache Lebensdauer ...

## Schmierfreie dryspin® Effizienz in 9 neuen Größen

Der leise und vibrationsfreie Lauf der igus® Steilgewindemuttern mit dryspin® Technologie beeindruckt auf den ersten Blick. Immer mehr Anwender in unterschiedlichsten Industrien vertrauen auf robuste und langlebige dryspin® Lösungen. Neun weitere Steilgewindeabmessungen mit effizienter dryspin® Technologie erweitern ab sofort das Lieferprogramm. Schmierfreie Gewindemuttern aus dry-tech® Materialien auf Steilgewindespindeln in Edelstahl und Aluminium, mit Rechts- und Linksgewinde.

- 4 langlebige dry-tech® Materialien zur Auswahl
- Leise und vibrationsfrei
- Robust durch Schmutzunempfindlichkeit

## Lubrication-free dryspin® efficiency in 9 new sizes

The quiet and vibration-free operation of the igus® lead screw nuts with dryspin® technology makes an immediate impression. More and more users in very different industries are placing their trust in robust and long-lasting dryspin® solutions. New additional high-helix thread dimensions with efficient dryspin® technology can now be supplied. Lubrication-free lead screw nuts made of dry-tech® materials on high-helix lead screws made of stainless steel and aluminium, with right-hand and left-hand thread.

- Choice of 4 dry-tech® materials with long service life
- Quiet and vibration-free
- Robust due to insensitivity to dirt

Art.-Nr. Part No.	Gewinde Thread d1 x P	d3	Steigung Pitch P	Max. Länge Max. length
DST-LS-8X15-L-ES	Ds8x15	8	15,0	3.000
DST-LS-10X12-L-ES	Ds10x12	10	12,0	3.000
DST-LS-12X5-R-ES	Ds12x5	12	5,0	3.000
DST-LS-12X25-R-ES	Ds12x25	12	25,0	3.000
DST-LS-14X25-L-ES	Ds14x25	14	25,0	3.000
DST-LS-14X40.6-R-ES	Ds14x40,6	14	40,6	3.000
DST-LS-18X24-R-ES	Ds18x24	18	24,0	3.000
DST-LS-20X80-R-ES	Ds20x80	20	80,0	3.000
DST-LS-20X90-L-ES	Ds20x90	20	90,0	3.000

## Abmessungen Gewindemuttern Dimensions lead screws[mm]

Art.-Nr. Part No.	Gewinde Thread	d2	d3	d4	d5	b1	b2	SW	Flächen- tragenteil Effective supporting surfaces [mm²]	max.stat. F axial Max.stat. F axial [N]
<b>DST-□...</b>		<b>d1 x P</b>								
<b>Mit Flansch With flange – optional mit Schlüsselfläche optional with spanner flat [SW]</b>										
...FLM-202020DS8X15	Ds8x15	20	36	28	4	20	8	20	205	512,5
...FLM-252525DS10X12	Ds10x12	25	42	34	5	25	10	25	343	857,5
...FRM-282835DS12X5	Ds12x5	28	48	38	6	35	12	28	581	1.452,5
...FRM-282835DS12X25	Ds12x25	28	48	38	6	35	12	28	562	1.405,0
...FLM-282835DS14X25	Ds14x25	28	48	38	6	35	12	28	576	1.440,0
...FRM-282835DS14X40.6	Ds14x40,6	28	48	38	6	35	12	28	562	1.417,5
...FRM-282835DS18X24	Ds18x24	28	48	38	6	35	18	28	821	2.053,0
...FRM-323244DS20X80	Ds20x80	32	55	45	7	44	12	32	755	1.887,5
...FLM-323244DS20X90	Ds20x90	32	55	45	7	44	12	32	671	1.677,5
<b>Zylindrisch Cylindrical</b>										
...SLM-1812DS8X15	Ds8x15	18	-	-	-	12	-	-	123	307,5
...SLM-2220DS10X12	Ds10x12	22	-	-	-	20	-	-	274	685,0
...SRM-2624DS12X5	Ds12x5	26	-	-	-	24	-	-	398	995,0
...SRM-2624DS12X25	Ds12x25	26	-	-	-	24	-	-	385	963,0
...SLM-3027DS14X25	Ds14x25	30	-	-	-	27	-	-	444	1.110,0
...SRM-3027DS14X40.6	Ds14x40,6	30	-	-	-	27	-	-	434	1.095,0
...SRM-4036DS18X24	Ds18x24	40	-	-	-	36	-	-	844	2.110,0
...SRM-4540DS20X80	Ds20x80	45	-	-	-	40	-	-	686	1.715,0
...SLM-4540DS20X90	Ds20x90	45	-	-	-	40	-	-	610	1.525,0