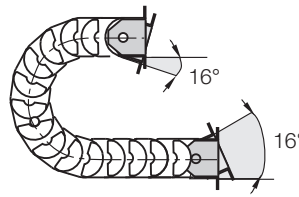


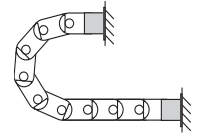
**Flange mounting brackets made of steel**

- Metallic flange brackets with popular hole patterns, easily be replaced by their modern successors, without having to alter the hole pattern
- Bolted connection outside of chain cross-section possible
- Universal mountable with attachment capability on all sides
- Steel, galvanized
- One-piece mounting bracket
- High stability

Moving end (outer link)  
906.463.X.1

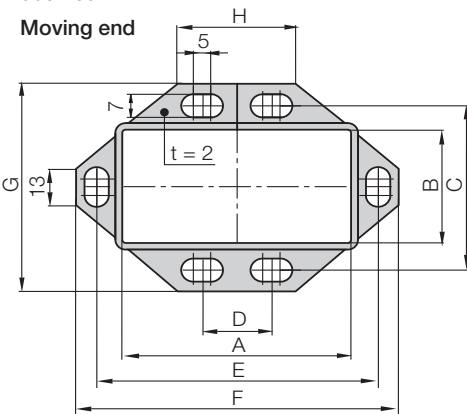


906.463.X.2  
Fixed end (inner link)



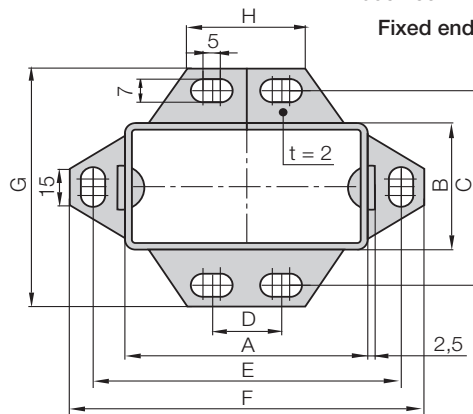
Flush mounting possibilities at both ends of the E-Tube

906.463.X.1  
Moving end



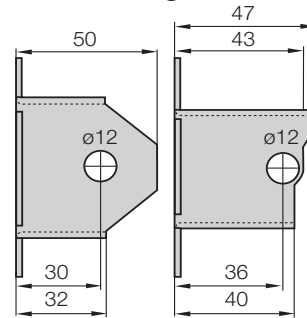
Hole pattern metallic flange  
Moving end 906.463.X.1

906.463.X.2  
Fixed end

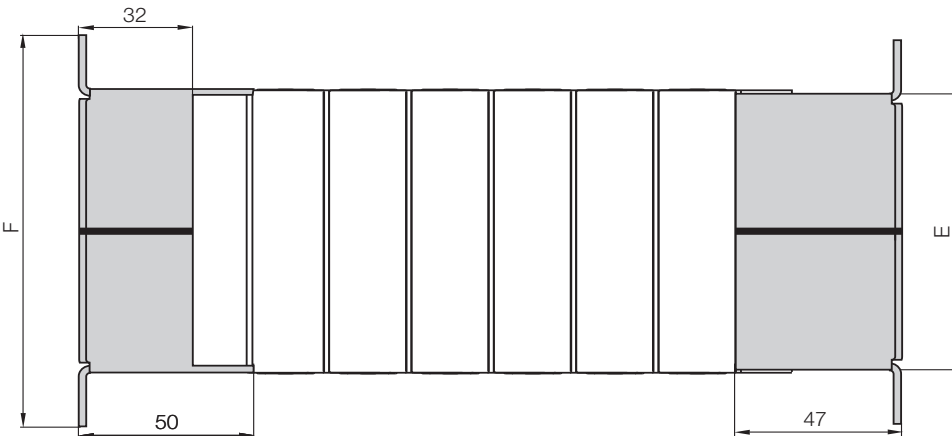


Hole pattern metallic flange  
Fixed end 906.463.X.2

**Dimensions and order configurations**



Moving end 906.463.X.1      Fixed end 906.463.X.2



Full set, for both ends:

906. 463. X. 12.

Single-part order:

906. 463. X. 1

Mounting bracket with bore

906. 463. X. 2.

Mounting bracket with pin

For Series	Hole pattern	Part No. Moving end	Part No. Fixed end	Bi [mm]	Ba [mm]	Dim. A [mm]	Dim. B [mm]	Dim. C [mm]	Dim. D [mm]	Dim. E [mm]	Dim. F [mm]	Dim. G [mm]	Dim. H [mm]
58.050	58.05	906.463.05.1	906.463.05.2	50	66	58,3	48	68	20	78,5	90,5	82	24,5
58.075	58.1	906.463.1.1	906.463.1.2	75	91	83,3	48	68	30	104	116	82	50

Phone +49- (0) 22 03-96 49-800  
Fax +49- (0) 22 03-96 49-222

