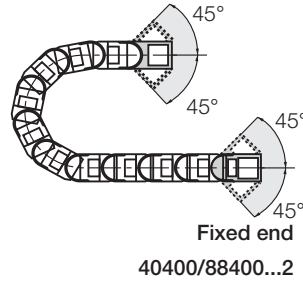


The Standard - Option KMA* - pivoting

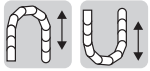
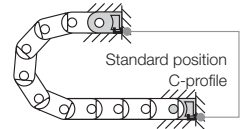
- Recommended for unsupported and gliding applications
- Confined installation conditions
- Option - integrated C-profile strain relief device with Chainfix clip or strain relief tiwrap plates
- Corrosion resistant
- Universal mountable with attachment capability on all sides

*KMA = Polymer Metal Mounting Bracket

Moving end
40400/88400...1



The attachment variants arising automatically by the choice of the KMA mounting bracket



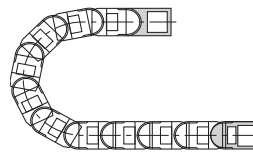
Option KMA - locking

- Recommended for vertical hanging / standing applications

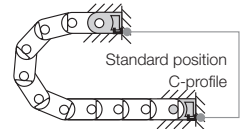
Additionally:

- Universal mountable
- C-profile option
- Corrosion resistant
- Locked connections
- At very high acceleration

Moving end
41400/89400...1

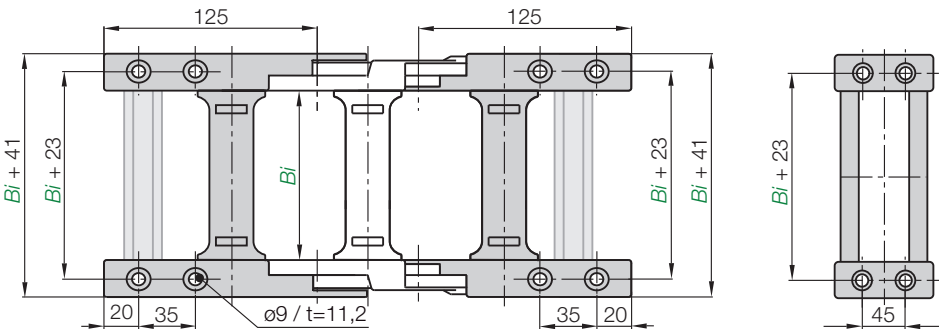


The attachment variants arising automatically by the choice of the KMA mounting bracket



Fixed end
40400/88400...2 (pivoting)
41400/89400...2 (locking)

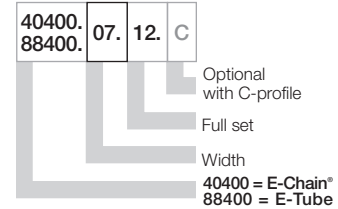
Moving end
(pivoting) 40400/88400...1
(locking) 41400/89400...1



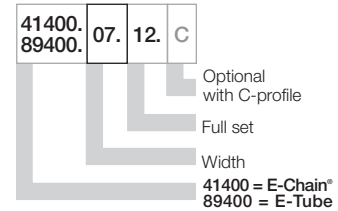
Width index	Part No. full set pivoting	Part No. full set locking	C-profile option [mm]	Width index	Part No. full set pivoting	Part No. full set locking	C-profile option [mm]
.05.	40400	41400	.05.12. C 50	.31.	40400	41400	.31.12. C 312
.06.	40400	41400	.06.12. C 65	.32.	40400	41400	.32.12. C 325
.07.	40400/88400	41400/89400	.07.12. C 75	.33.	40400	41400	.33.12. C 337
.08.	40400	41400	.08.12. C 87	.35.	40400/88400	41400/89400	.35.12. C 350
.10.	40400/88400	41400/89400	.10.12. C 100	.36.	40400	41400	.36.12. C 362
.11.	40400	41400	.11.12. C 112	.37.	40400	41400	.37.12. C 375
.12.	40400/88400	41400/89400	.12.12. C 125	.38.	40400	41400	.38.12. C 387
.13.	40400	41400	.13.12. C 137	.40.	40400/88400	41400/89400	.40.12. C 400
.15.	40400/88400	41400/89400	.15.12. C 150	.41.	40400	41400	.41.12. C 412
.16.	40400	41400	.16.12. C 162	.42.	40400	41400	.42.12. C 425
.17.	40400	41400	.17.12. C 175	.43.	40400	41400	.43.12. C 437
.18.	40400	41400	.18.12. C 187	.45.	40400	41400	.45.12. C 450
.20.	40400/88400	41400/89400	.20.12. C 200	.46.	40400/88400	41400/89400	.46.12. C 462
.21.	40400	41400	.21.12. C 212	.47.	40400	41400	.47.12. C 475
.22.	40400	41400	.22.12. C 225	.48.	40400	41400	.48.12. C 487
.23.	40400	41400	.23.12. C 237	.50.	40400	41400	.50.12. C 500
.25.	40400/88400	41400/89400	.25.12. C 250	.51.	40400	41400	.51.12. C 512
.26.	40400	41400	.26.12. C 262	.52.	40400	41400	.52.12. C 525
.27.	40400/88400	41400/89400	.27.12. C 275	.53.	40400	41400	.53.12. C 537
.28.	440400	41400	.28.12. C 287	.55.	40400	41400	.55.12. C 550
.30.	40400/88400	41400/89400	.30.12. C 300	.60.	40400	41400	.60.12. C 600

Dimensions and order configurations

Part No. structure (pivoting)



Part No. structure (locking)



Full set, for both ends:

40400.05.12

Single-part order:

40400.05.1

Mounting bracket moving end

40400.05.2

Mounting bracket fixed end

