

# iglidur® JATM/VATM – Matching sliding Surfaces



Maintenance-free plain bearing system

For high performance

Matching sliding surfaces

Predictable service life

iglidur® JATM/VATM

Phone +49 - 22 03 - 96 49-145  
Fax +49 - 22 03 - 96 49-334





iglidur® JATM/VATM consists of an anodized aluminium ring combined with an iglidur® bearing ring. This combination of materials results in low friction values and high wear resistance – without lubrication.

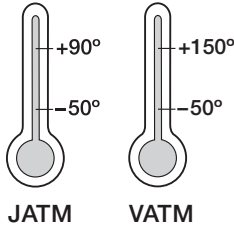
iglidur® JATM/VATM

2 Materials

20mm ex stock,  
other sizes on request



Phone +49 - 22 03 - 96 49-145  
Fax +49 - 22 03 - 96 49-334



igus® GmbH  
51147 Cologne



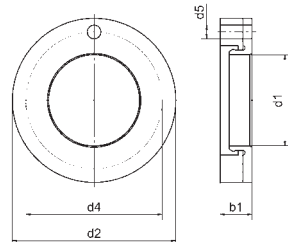
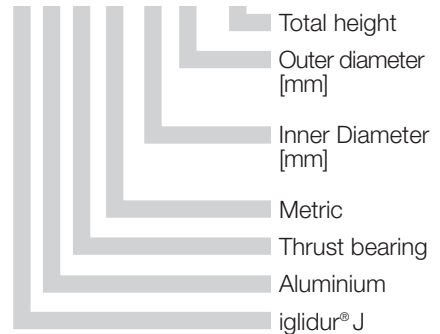
Material:  
iglidur® J  
▶ chapter 3  
iglidur® V400  
▶ chapter 21

### Special properties:

- Maintenance-free bearing system
  - For high performance
  - Matching sliding surfaces
  - Predictable life time
  - Material: iglidur® J ▶ chapter 3
  - High-temperature version available: VATM, iglidur® V400 ▶ chapter 21
- Further dimensions and delivery on request

Data in mm

Structure – part no.  
**J A T M-2036-070**



### Dimensions [mm]

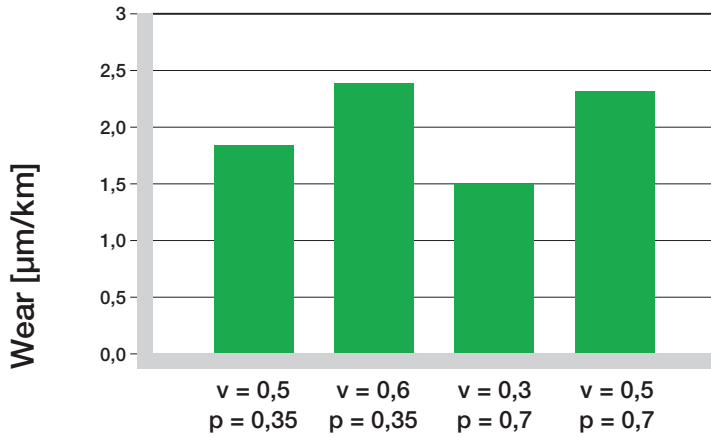
iglidur® JATM/VATM

Part No.	d1 [mm]	d2 [mm]	s [mm]	d4 [mm]	d5 [mm]
JATM-2036-070	20	36	7	30	3
VATM-2036-070	20	36	7	30	3

Internet [www.igus.de](http://www.igus.de)  
E-mail [info@igus.de](mailto:info@igus.de)

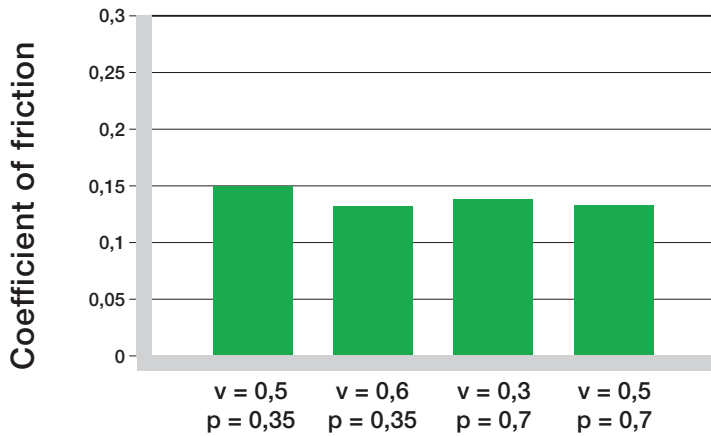


The calculated rates of wear rates of thrust bearing JATM



Graph 37.1: The graph shows the effect of pressure (p in MPa) and speed (v in m/s) on the thrust bearing wear

Calculated friction value of thrust bearing JATM



Graph 37.2: In a test, the friction values of the bearing systems were calculated at different speeds (v) and pressures (p) – (v in m/s, p in MPa)



We welcome your request for a thrust bearing customised for your application.  
 Phone +49 - 22 03 - 96 49-145

iglidur® JATM/VATM

Phone +49 - 22 03 - 96 49-145  
 Fax +49 - 22 03 - 96 49-334

