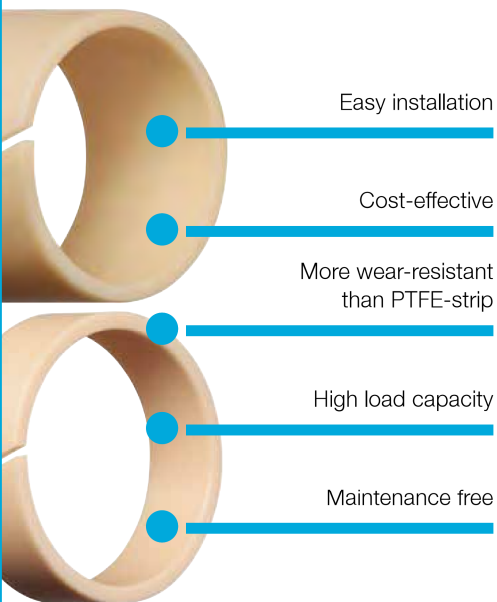


Easy and economic: iglidur® piston rings



iglidur® piston rings

Why complicate things if you do not need to? Some things can actually be very easy: Replace complex stamped PTFE strips with a single clip-on guide ring, for example in cylinders, control valves and fittings. In addition to the standard iglidur® J range, it is also possible to configure your desired piston ring from the entire iglidur® bearing range.



When to use it?

- When piston rings with excellent wear properties are required
- When simple assembly is of great importance
- When high edge loads occur
- When tailor-made solutions based on iglidur® materials are required



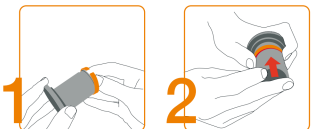
When not to use it?

- When the piston rings should also act as a seal
- When different diameters should be covered by one part

Traditional method:

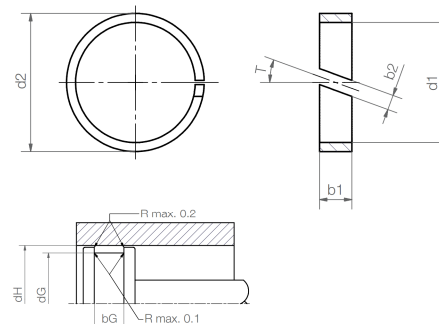


with iglidur®:



iglidur® J piston rings, from stock

iglidur® J is our all-round material when it comes to an outstanding running performance and low coefficients of friction on the broadest range of shafts. The flexibility of iglidur® J enables the typical assembly expected with piston rings using the push over/clip on method. Good media resistance rounds off the range of properties.



Installation recommendation for piston

Dimensions [mm]	dG (h-tolerate)	dH (h-tolerate)	bG
Nominal size	dG = d1	dH = d2	bG = b1 + 0.2

Dimensions [mm]

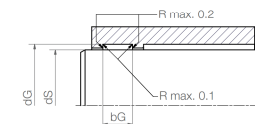
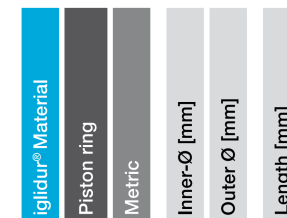
d1	d2	b1 h13	b2 ±0.5	T [°]	Part No.
6	8	6	1.0	0	JPRM-0608-06
8	10	10	1.0	0	JPRM-0810-10
10	12	5.4	2.5	20	JPRM-1012-054
12	14	5.4	2.5	20	JPRM-1214-054
14	16	5.4	2.5	20	JPRM-1416-054
14	16	10	1.0	20	JPRM-1416-10
16	18	5.4	2.5	20	JPRM-1618-054
17	22	5.4	2.5	25	JPRM-1722-054
20	23	5.4	2.5	20	JPRM-2023-054
25	28	5.4	2.5	20	JPRM-2528-054
28	32	10	1.0	20	JPRM-2832-10
28	32	20	1.0	20	JPRM-2832-20
28	33	5.4	2.5	25	JPRM-2833-054
30	34	5.4	2.5	20	JPRM-3034-054
35	39	5.4	2.5	20	JPRM-3539-054
35	40	5.4	2.5	25	JPRM-3540-054
40	44	5.4	2.5	20	JPRM-4044-054
45	50	5.4	2.5	20	JPRM-4550-054



Order key

Type Dimensions

J PR M -06 08-06



Installation recommendation for housing

Dimensions [mm]	dS (h-tolerate)	dG (h-tolerate)	bG
Nominal size	dS = d1	dG = d2	bG = b1 + 0.2

d1	d2	b1 h13	b2 ±0.5	T [°]	Part No.
45	50	10	2.0	0	JPRM-4550-10
50	55	5.4	2.5	20	JPRM-5055-054
50	55	10	2.0	0	JPRM-5055-10
58	63	9.5 (-0.22)	2.5	25	JPRM-5863-095
60	65	5.4	2.5	20	JPRM-6065-054
70	75	5.4	2.5	20	JPRM-7075-054



More Information about iglidur®-Material and technical data
iglidur® J ► page 99



max. +90 °C
min. -50 °C



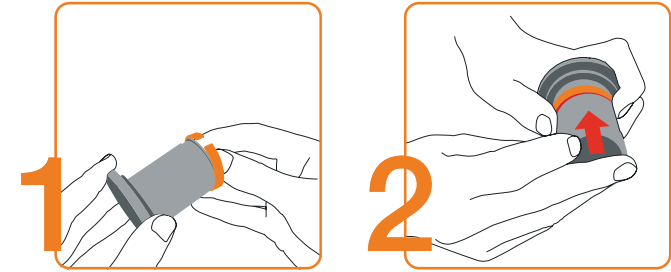
Ø 6–70 mm
more dimensions on request



Available from stock
Detailed information about delivery time online



Fast assembly Schnell montiert



... piston rings ... new sizes ...

New size for lubrication-free standard piston rings made from iglidur® J

- Easy to fit
- Wear-resistant
- Good edge-load resistance
- iglidur® J standard product range
- Configure your desired piston ring from the entire iglidur® bearing range
- Lubrication and maintenance-free

Typical application areas:

Valves, actuators, lifting elements, fixtures, chemicals, medical equipment

Neue Größe für schmierfreie Standard-Kolbenringe aus iglidur® J

- Schnell montierbar
- Verschleißfest
- Gut bei Kantenlasten
- Standardprogramm in iglidur® J
- Weitere Wunschkolbenringe aus dem gesamten Gleitlagerprogramm konfigurierbar
- Schmiermittel- und wartungsfrei

Typische Anwendungsbereiche:

Ventile, Aktuatoren, Hubelemente, Armaturen, Chemie, Medizintechnik

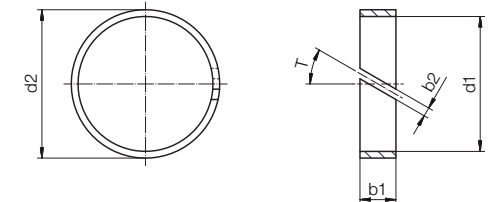
General properties Allgemeine Eigenschaften		igidur® J
Density Dichte		1.49 g/cm ³
Colour Farbe		cream creme
Max. moisture absorption at +23°C and 50% r.h. 0.3 % weight Max. Feuchtigkeitsaufnahme bei +23°C/50% r.F. Gew.-%		1.3 % weight Gew.-%
Max. water absorption Max. Wasseraufnahme		1.3 % weight Gew.-%
Electrical properties Elektrische Eigenschaften		
Specific contact resistance Spezifischer Durchgangswiderstand		> 10 ¹³ Ωcm
Surface resistance Oberflächenwiderstand		> 10 ¹² Ωcm

Mechanical properties Mechanische Eigenschaften		
Modulus of elasticity Biege-E-Modul		2,400 MPa
Flexural strength Biegefestigkeit		73 MPa
Recom. surface pressure Max. empf. Flächenpressung		60 MPa
Hardness Shore D-Härte		74
Thermal properties Thermische Eigenschaften		
Max. long-term application temperature Obere langzeitige Anwendungstemperatur		+90 °C
Max. short-term application temperature Obere kurzzeitige Anwendungstemperatur		+120 °C
Min. application temperature Untere Anwendungstemperatur		-50 °C

Part No. Art.-Nr.	d1	d2	b1	b2	T
JPRM-0608-06	6	8	6	1.0	0
JPRM-0810-10	8	10	10	1.0	0
JPRM-1012-054	10	12	5.4	2.5	20
JPRM-1214-054	12	14	5.4	2.5	20
NEW JPRM-1315-054	13	15	5.4	2.5	20
JPRM-1416-054	14	16	5.4	2.5	20
JPRM-1416-10	14	16	10	1.0	20
JPRM-1618-054	16	18	5.4	2.5	20
JPRM-1722-054	17	22	5.4	2.5	25

Part No. Art.-Nr.	d1	d2	b1	b2	T
JPRM-2023-054	20	23	5.4	2.5	20
JPRM-2528-054	25	28	5.4	2.5	20
JPRM-2832-10	28	32	10	1.0	20
JPRM-2832-20	28	32	20	1.0	20
JPRM-2833-054	28	33	5.4	2.5	25
JPRM-3034-054	30	34	5.4	2.5	20
JPRM-3539-054	35	39	5.4	2.5	20
JPRM-3540-054	35	40	5.4	2.5	25
JPRM-4044-054	40	44	5.4	2.5	20

Part No. Art.-Nr.	d1	d2	b1	b2	T
JPRM-4550-054	45	50	5.4	2.5	20
JPRM-4550-10	45	50	10	2.0	0
JPRM-5055-054	50	55	5.4	2.5	20
JPRM-5055-10	50	55	10	2.0	0
JPRM-5863-095	58	63	9.5 (-0.22)	2.5	25
JPRM-6065-054	60	65	5.4	2.5	20
JPRM-7075-054	70	75	5.4	2.5	20



Available Lieferbar
from stock ab Lager

www.igus.eu/pistonrings
www.igus.de/kolbenringe