

d1	d2	b1	d1 ³⁾		Einpressbohrung		Wellenmaße		Art.-Nr.
			max.	min.	max.	min.	max.	min.	
3/4	7/8	1/2	.7532	.7499	.8755	.8747	.7491	.7479	XSI-1214-08
3/4	7/8	3/4	.7532	.7499	.8755	.8747	.7491	.7479	XSI-1214-12
3/4	7/8	1	.7532	.7499	.8755	.8747	.7491	.7479	XSI-1214-16
7/8	1	1/2	.8782	.8749	1.0005	.9997	.8741	.8729	XSI-1416-08
7/8	1	3/4	.8782	.8749	1.0005	.9997	.8741	.8729	XSI-1416-12
7/8	1	1	.8782	.8749	1.0005	.9997	.8741	.8729	XSI-1416-16
1	1 1/8	1/2	1.0032	.9999	1.1255	1.1247	.9991	.9979	XSI-1618-08
1	1 1/8	3/4	1.0032	.9999	1.1255	1.1247	.9991	.9979	XSI-1618-12
1	1 1/8	1	1.0032	.9999	1.1255	1.1247	.9991	.9979	XSI-1618-16
1	1 1/8	1 1/2	1.0032	.9999	1.1255	1.1247	.9991	.9979	XSI-1618-24
1 1/8	1 9/32	3/4	1.1279	1.1246	1.2818	1.2808	1.1238	1.1226	XSI-1820-12
1 1/8	1 9/32	1	1.1279	1.1246	1.2818	1.2808	1.1238	1.1226	XSI-1820-16
1 1/8	1 9/32	1 1/4	1.1279	1.1246	1.2818	1.2808	1.1238	1.1226	XSI-1820-20
1 1/4	1 13/32	5/8	1.2537	1.2498	1.4068	1.4058	1.2488	1.2472	XSI-2022-10
1 1/4	1 13/32	3/4	1.2537	1.2498	1.4068	1.4058	1.2488	1.2472	XSI-2022-12
1 1/4	1 13/32	1	1.2537	1.2498	1.4068	1.4058	1.2488	1.2472	XSI-2022-16
1 1/4	1 13/32	1 1/4	1.2537	1.2498	1.4068	1.4058	1.2488	1.2472	XSI-2022-20
1 1/2	1 21/32	3/4	1.5037	1.4998	1.6568	1.6558	1.4988	1.4972	XSI-2426-12
1 1/2	1 21/32	1	1.5037	1.4998	1.6568	1.6558	1.4988	1.4972	XSI-2426-16
1 1/2	1 21/32	1 1/2	1.5037	1.4998	1.6568	1.6558	1.4988	1.4972	XSI-2426-24
1 5/8	1 25/32	1	1.6287	1.6248	1.7818	1.7808	1.6238	1.6222	XSI-2629-16
1 5/8	1 25/32	1 1/4	1.6287	1.6248	1.7818	1.7808	1.6238	1.6222	XSI-2629-20
1 5/8	1 25/32	1 1/2	1.6287	1.6248	1.7818	1.7808	1.6238	1.6222	XSI-2629-24
1 3/4	1 15/16	1	1.7536	1.7497	1.9381	1.9371	1.7487	1.7471	XSI-2831-16
1 3/4	1 15/16	2	1.7536	1.7497	1.9381	1.9371	1.7487	1.7471	XSI-2831-32
1 7/8	2 1/16	1	1.8747	1.8786	2.0633	2.0621	1.8737	1.8721	XSI-3033-16
1 7/8	2 1/16	2	1.8747	1.8786	2.0633	2.0621	1.8737	1.8721	XSI-3033-32
2	2 3/16	1	2.0040	1.9993	2.1883	2.1871	1.9981	1.9969	XSI-3235-16
2	2 3/16	1 1/2	2.0040	1.9993	2.1883	2.1871	1.9981	1.9969	XSI-3235-24
2	2 3/16	2	2.0040	1.9993	2.1883	2.1871	1.9981	1.9969	XSI-3235-32
2 1/4	2 7/16	2	2.2577	2.2531	2.4377	2.4365	2.2507	2.2489	XSI-3639-32
2 3/4	2 15/16	2	2.7570	2.7523	2.9370	2.9358	2.7500	2.7490	XSI-4447-32

³⁾ nach dem Einpressen. Messverfahren ► Seite 57

iglidur® Z										Kapitel ► Seite 255	
d1	d2	b1	d1 ³⁾		Einpressbohrung		Wellenmaße		Art.-Nr.		
			max.	min.	max.	min.	max.	min.			
1/8	3/16	3/16	.1266	.1247	.1878	.1873	.1243	.1236	ZSI-0203-03		
3/16	1/4	1/4	.1888	.1869	.2503	.2497	.1865	.1858	ZSI-0304-04		
3/16	1/4	3/8	.1888	.1869	.2503	.2497	.1865	.1858	ZSI-0304-06		
1/4	5/16	3/8	.2518	.2495	.3128	.3122	.2490	.2481	ZSI-0405-06		
1/4	5/16	1/2	.2518	.2495	.3128	.3122	.2490	.2481	ZSI-0405-08		
5/16	3/8	1/4	.3143	.3120	.3753	.3747	.3115	.3106	ZSI-0506-04		
5/16	3/8	3/8	.3143	.3120	.3753	.3747	.3115	.3106	ZSI-0506-06		
5/16	3/8	1/2	.3143	.3120	.3753	.3747	.3115	.3106	ZSI-0506-08		
3/8	15/32	1/4	.3768	.3745	.4691	.4684	.3740	.3731	ZSI-0607-04		
3/8	15/32	3/8	.3768	.3745	.4691	.4684	.3740	.3731	ZSI-0607-06		
3/8	15/32	1/2	.3768	.3745	.4691	.4684	.3740	.3731	ZSI-0607-08		
3/8	15/32	5/8	.3768	.3745	.4691	.4684	.3740	.3731	ZSI-0607-10		
3/8	15/32	3/4	.3768	.3745	.4691	.4684	.3740	.3731	ZSI-0607-12		
7/16	17/32	1/2	.4399	.4371	.5316	.5309	.4365	.4355	ZSI-0708-08		
7/16	17/32	3/4	.4399	.4371	.5316	.5309	.4365	.4355	ZSI-0708-12		
1/2	19/32	1/4	.5024	.4996	.5941	.5934	.4990	.4980	ZSI-0809-04		
1/2	19/32	3/8	.5024	.4996	.5941	.5934	.4990	.4980	ZSI-0809-06		
1/2	19/32	1/2	.5024	.4996	.5941	.5934	.4990	.4980	ZSI-0809-08		
1/2	19/32	5/8	.5024	.4996	.5941	.5934	.4990	.4980	ZSI-0809-10		
1/2	19/32	3/4	.5024	.4996	.5941	.5934	.4990	.4980	ZSI-0809-12		
1/2	19/32	1	.5024	.4996	.5941	.5934	.4990	.4980	ZSI-0809-16		
1/2	5/8	3/4	.5034	.5006	.6260	.6250	.5000	.4990	ZSI-0810-12		
9/16	21/32	1/2	.5649	.5620	.6566	.6559	.5615	.5605	ZSI-0910-08		
9/16	21/32	5/8	.5649	.5620	.6566	.6559	.5615	.5605	ZSI-0910-10		
9/16	21/32	3/4	.5649	.5620	.6566	.6559	.5615	.5605	ZSI-0910-12		
5/8	23/32	1/2	.6274	.6246	.7192	.7184	.6240	.6230	ZSI-1011-08		
5/8	23/32	3/4	.6274	.6246	.7192	.7184	.6240	.6230	ZSI-1011-12		
5/8	23/32	1	.6274	.6246	.7192	.7184	.6240	.6230	ZSI-1011-16		
3/4	7/8	1/2	.7532	.7499	.8755	.8747	.7491	.7479	ZSI-1214-08		
3/4	7/8	3/4	.7532	.7499	.8755	.8747	.7491	.7479	ZSI-1214-12		
3/4	7/8	1	.7532	.7499	.8755	.8747	.7491	.7479	ZSI-1214-16		
7/8	1	1/2	.8782	.8749	1.0005	.9997	.8741	.8729	ZSI-1416-08		
7/8	1	3/4	.8782	.8749	1.0005	.9997	.8741	.8729	ZSI-1416-12		
7/8	1	1	.8782	.8749	1.0005	.9997	.8741	.8729	ZSI-1416-16		
1	1 1/8	1/2	1.0032	.9999	1.1255	1.1247	.9991	.9979	ZSI-1618-08		
1	1 1/8	3/4	1.0032	.9999	1.1255	1.1247	.9991	.9979	ZSI-1618-12		
1	1 1/8	1	1.0032	.9999	1.1255	1.1247	.9991	.9979	ZSI-1618-16		
1	1 1/8	1 1/2	1.0032	.9999	1.1255	1.1247	.9991	.9979	ZSI-1618-24		
1 1/8	1 1/4	3/4	1.1279	1.1246	1.2818	1.2808	1.1238	1.1226	ZSI-1820-12		
1 1/8	1 1/4	1	1.1279	1.1246	1.2818	1.2808	1.1238	1.1226	ZSI-1820-16		
1 1/8	1 1/4	1 1/4	1.1279	1.1246	1.2818	1.2808	1.1238	1.1226	ZSI-1820-20		
1 1/8	1 9/32	1 1/2	1.1279	1.1246	1.2818	1.2808	1.1238	1.1226	ZSI-1820-24		
1 1/4	1 13/32	3/4	1.2537	1.2498	1.4068	1.4058	1.2488	1.2472	ZSI-2022-12		
1 1/4	1 13/32	1	1.2537	1.2498	1.4068	1.4058	1.2488	1.2472	ZSI-2022-16		

³⁾ nach dem Einpressen. Messverfahren ► Seite 57

d1	d2	b1	d1 ³⁾		Einpressbohrung		Wellenmaße		Art.-Nr.
			max.	min.	max.	min.	max.	min.	
1 1/4	1 13/32	1 1/4	1.2537	1.2498	1.4068	1.4058	1.2488	1.2472	ZSI-2022-20
1 1/2	1 21/32	1	1.5037	1.4998	1.6568	1.6558	1.4988	1.4972	ZSI-2426-16
1 1/2	1 21/32	1 1/2	1.5037	1.4998	1.6568	1.6558	1.4988	1.4972	ZSI-2426-24
1 5/8	1 25/32	1	1.6287	1.6248	1.7818	1.7808	1.6238	1.6222	ZSI-2629-16
1 5/8	1 25/32	1 1/2	1.6287	1.6248	1.7818	1.7808	1.6238	1.6222	ZSI-2629-24
1 3/4	1 15/16	1	1.7536	1.7497	1.9381	1.9371	1.7487	1.7471	ZSI-2831-16
1 3/4	1 15/16	2	1.7536	1.7497	1.9381	1.9371	1.7487	1.7471	ZSI-2831-32
1 7/8	2 1/16	1	1.8747	1.8786	2.0633	2.0621	1.8737	1.8721	ZSI-3033-16
1 7/8	2 1/16	2	1.8747	1.8786	2.0633	2.0621	1.8737	1.8721	ZSI-3033-32
2	2 3/16	1	2.0040	1.9993	2.1883	2.1871	1.9981	1.9969	ZSI-3235-16
2	2 3/16	2	2.0040	1.9993	2.1883	2.1871	1.9981	1.9969	ZSI-3235-32
2 1/4	27/16	2	2.2556	2.2519	2.4377	2.4365	2.2507	2.2489	ZSI-3639-32

³⁾ nach dem Einpressen. Messverfahren ► Seite 57

Gleitlager mit Bund

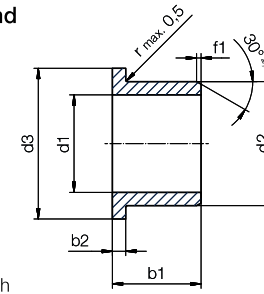


Abbildung exemplarisch

Fase in Abhängigkeit von d1

d1 [Inch]	f [Inch]
Ø 0.040–0.236	0.012
Ø 0.236–0.472	0.019
Ø 0.472–1.18	0.031
Ø > 1.18	0.047

iglidur® A181 Kapitel ► Seite 339

d1	d2	b1	d3	b2	d1 ³⁾		Einpressbohrung		Wellenmaße		Art.-Nr.
					max.	min.	max.	min.	max.	min.	
1/8	3/16	3/16	.3120	.0320	.1269	.1251	.1878	.1873	.1243	.1236	A181FI-0203-03
3/16	1/4	1/4	.3750	.0320	.1892	.1873	.2503	.2497	.1865	.1858	A181FI-0304-04
1/4	5/16	3/8	.5000	.0320	.2521	.2498	.3128	.3122	.2490	.2481	A181FI-0405-06
1/4	5/16	1/2	.5000	.0320	.2521	.2498	.3128	.3122	.2490	.2481	A181FI-0405-08
5/16	3/8	1/4	.5620	.0320	.3148	.3125	.3753	.3747	.3115	.3106	A181FI-0506-04
5/16	3/8	3/8	.5620	.0320	.3148	.3125	.3753	.3747	.3115	.3106	A181FI-0506-06
5/16	3/8	1/2	.5620	.0320	.3148	.3125	.3753	.3747	.3115	.3106	A181FI-0506-08
3/8	15/32	1/4	.6870	.0460	.3773	.3750	.4691	.4684	.3740	.3731	A181FI-0607-04
3/8	15/32	3/8	.6870	.0460	.3773	.3750	.4691	.4684	.3740	.3731	A181FI-0607-06
3/8	15/32	1/2	.6870	.0460	.3773	.3750	.4691	.4684	.3740	.3731	A181FI-0607-08
3/8	15/32	3/4	.6870	.0460	.3773	.3750	.4691	.4684	.3740	.3731	A181FI-0607-12
7/16	17/32	1/2	.7500	.0460	.4406	.4379	.5316	.5309	.4365	.4355	A181FI-0708-08
1/2	19/32	1/4	.8750	.0460	.5030	.5003	.5941	.5934	.4990	.4980	A181FI-0809-04
1/2	19/32	3/8	.8750	.0460	.5030	.5003	.5941	.5934	.4990	.4980	A181FI-0809-06
1/2	19/32	1/2	.8750	.0460	.5030	.5003	.5941	.5934	.4990	.4980	A181FI-0809-08
1/2	19/32	3/4	.8750	.0460	.5030	.5003	.5941	.5934	.4990	.4980	A181FI-0809-12
1/2	19/32	1	.8750	.0460	.5030	.5003	.5941	.5934	.4990	.4980	A181FI-0809-16
5/8	23/32	1/2	.9370	.0460	.6280	.6253	.7192	.7184	.6240	.6230	A181FI-1011-08
5/8	23/32	3/4	.9370	.0460	.6280	.6253	.7192	.7184	.6240	.6230	A181FI-1011-12
5/8	23/32	1	.9370	.0460	.6280	.6253	.7192	.7184	.6240	.6230	A181FI-1011-16
3/4	7/8	1/2	1.1250	.0620	.7541	.7505	.8755	.8747	.7491	.7479	A181FI-1214-08
3/4	7/8	3/4	1.1250	.0620	.7541	.7505	.8755	.8747	.7491	.7479	A181FI-1214-12
3/4	7/8	1	1.1250	.0620	.7541	.7505	.8755	.8747	.7491	.7479	A181FI-1214-16
7/8	1	1/2	1.2500	.0620	.8791	.8757	1.0005	.9997	.8741	.8729	A181FI-1416-08
7/8	1	3/4	1.2500	.0620	.8791	.8757	1.0005	.9997	.8741	.8729	A181FI-1416-12
7/8	1	1	1.2500	.0620	.8791	.8757	1.0005	.9997	.8741	.8729	A181FI-1416-16
1	1 1/8	1/2	1.3750	.0620	1.0041	1.0007	1.1255	1.1247	.9991	.9979	A181FI-1618-08
1	1 1/8	3/4	1.3750	.0620	1.0041	1.0007	1.1255	1.1247	.9991	.9979	A181FI-1618-12
1	1 1/8	1	1.3750	.0620	1.0041	1.0007	1.1255	1.1247	.9991	.9979	A181FI-1618-16
1 1/4	1 13/32	1	1.6870	.0780	1.2548	1.2508	1.4068	1.4058	1.2488	1.2472	A181FI-2022-16
1 1/4	1 13/32	1 1/4	1.6870	.0780	1.2548	1.2508	1.4068	1.4058	1.2488	1.2472	A181FI-2022-20
1 1/2	1 21/32	1	2.0000	.0780	1.5048	1.5008	1.6568	1.6558	1.4988	1.4972	A181FI-2426-16
1 1/2	1 21/32	1 1/2	2.0000	.0780	1.5048	1.5008	1.6568	1.6558	1.4988	1.4972	A181FI-2426-24

³⁾ nach dem Einpressen. Messverfahren ► Seite 57