

# xirodur® B180 Polymer Ball Transfer Unit | Product Range



BB-515-B180-POM



**New!** BB-522-B180-POM

Made of xirodur® B180

POM balls



+80 °C

-40 °C



Order key

## BB-515-B180-POM

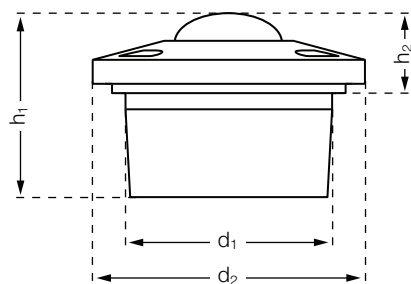


xiros® polymer ball transfer unit made of xirodur® B180 for the lubricant-free transport of sensitive product.

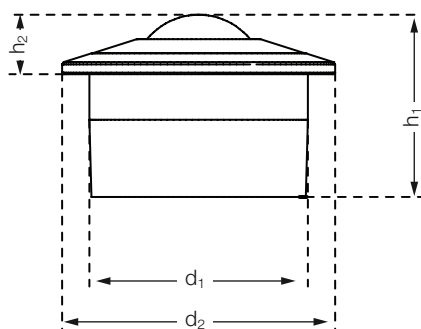
The support ball is mounted inside the housing on many smaller balls, in order to optimize the running behavior.

The entire structure of the polymer ball caster consists of plastic components.

- Lubrication- and maintenance-free
- Low coefficient of friction
- Corrosion-resistant and non-magnetic
- Temperature resistant up to +80 °C
- Electrically insulating



BB-515-B180-POM

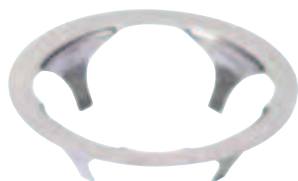


BB-522-B180-POM

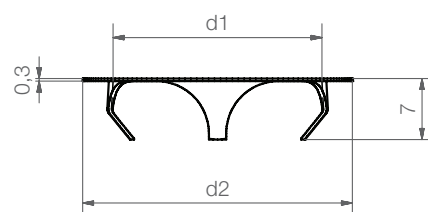
## Dimensions [mm]

Part number	Ball	d1	d2	h1	h2	Max. stat. bearing load axial [N]	Weight [g]
		-0,30			±0.20		
BB-515-B180-POM	POM	24	31	21	9.8	80	8.7
BB-522-B180-POM <b>New!</b>	POM	36	45	30	9.8	110	28.8

## **New!** Clamp rings for xiros®-polymer ball transfer units



xiros® clamp rings offer the possibility to install the xiros® ball transfer unit in another orientation than the standard horizontal position. Both assembly and disassembly are very easy.



BB-515-CR

## Dimensions [mm]

Part number	For ball transfer unit	d1	d2	Housing bore
BB-515-CR <b>New!</b>	BB-515-B180-POM	24	31	25 -0.2
BB-522-CR <b>New!</b>	BB-522-B180-POM	36	41	37.3 -0.3

# Polymer ball transfer unit | Product range

Made from xirodur® B180, for axial loads



Polymer ball transfer unit



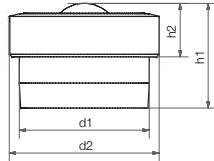
Polymer ball transfer unit



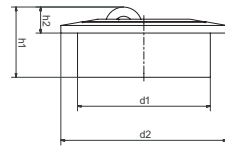
Axial polymer ball transfer unit for high loads (HH)



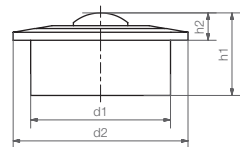
Axial polymer ball transfer unit with soft roller made from xirodur® D180 (HS)



BB-505-B180-POM



BB-515A-B180-HH/HS  
BB-522A-B180-HH/HS



BB-522-B180-POM  
BB-515-B180-POM

## Order key

Type xirodur® Options

BB-522A-B180-HS

- Ball bearing
- Type
- Axial ball bearings
- Material
- Ball transfer unit

Options:

**Polymer ball transfer unit:**  
POM ball

POM = POM

**Axial polymer ball transfer unit:**

B180 = HH (hard roller) or

D180 = HS (soft roller)

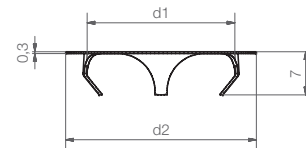
## Technical data and dimensions [mm]

Size	Max. stat. bearing load axial [N]	Inner Ø		Height		Weight [g]	Part No.
		d1	d2	h1	h2		
505	35	10.4	12.0	8.4	4.3	0.9	BB-505-B180-POM
515	80	24.0	31.0	21.0	9.8	8.7	BB-515-B180-POM
515A	150	24.0	31.0	14.3	5.3	15.6	BB-515A-B180-□
522	110	36.0	45.0	30.0	9.8	28.8	BB-522-B180-POM
522A	300	36.0	45.0	21.25	7.05	21.7	BB-522A-B180-□

## Clamp rings for xiros®-polymer ball transfer units



xiros® clamp rings made from stainless steel offer the possibility to install xiros® ball transfer units in another orientation than the standard horizontal position. Easy assembly and disassembly.



## Dimensions [mm]

Part No.	For ball transfer unit	d1	d2	Housing bore
BB-515-CR	BB-515-B180-POM/BB-515A-B180-□	24	31	25.0 -0.2
BB-522-CR	BB-522-B180-POM/BB-522A-B180-□	36	41	37.3 -0.3

# Slewing ring bearings | Product range

Made from xirodur® B180, low coefficients of friction



Stainless steel balls



Glass balls



Stainless steel balls, with gear teeth

## Order key

Type Options

BB-RT-01-60-ES

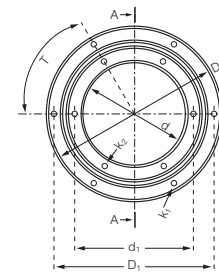
- Ball bearing
- Slewing ring bearing
- Type 01
- Inner Ø
- Ball material

Options:

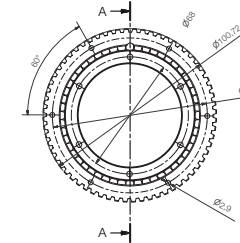
**Ball material**

ES = stainless steel

GL = glass



Standard version



Version with gear teeth

## Technical data

Type	Bearing load		Max. speed [rpm]	Weight	
	stat. [N]	dyn. [N]		ES [g]	GL [g]
RT-01-60	800	1,000	250	111.9	98.3
RT-01-60-HDT5	800	1,000	860	110.0	-
RT-01-100	1,250	1,500	250	250.8	231.1

## Dimensions [mm]

D	D1	d	d1	H	h	T	K1	K2	Part No.
100	90.0	60	68	17.5	2.5	60	3.3	3.3	BB-RT-01-60-□
100	90.0	60	68	17.5	2.5	60	3.3	3.3	BB-RT-01-60-HDT5-B180-ES
160	150.0	100	110	20	5	60	5.2	5.2	BB-RT-01-100-□

## Order example:

BB-RT-01-60-ES = slewing ring bearing with stainless steel balls