

# Mubux®-Z – press-in threaded inserts ...



Mubux®-Z is a press-in threaded insert made of hardened and zinc-plated steel with helical annular gear around the outside.

### Application range

For screw fasteners in cast components made of NF metal – primarily light alloy, for through holes and blind holes.

### Mounting

Mubux®-Z is simply pressed into a normal borehole. The retaining hole is drilled or provided for during the casting processes.

Mubux®-Z is inserted with the guiding shoulder pointing downwards into the borehole. The press die should be smooth (if applicable polished) in order not to impede the rotary movement of the Mubux®-Z during the pressin process.

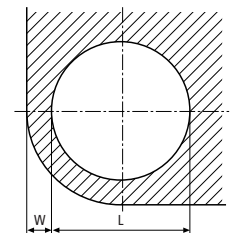
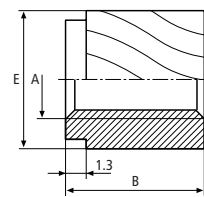
### Product features

- simple assembly
- limited assembly costs thanks to press-in operations
- wear-resistant female thread
- no reaming

	<b>Press-in threaded insert</b>	<b>Mubux®-Z</b> Works Standard 890
--	---------------------------------	--

### Application

For the creation of wear-resistant screw joints with high load capability in cast alloy components. Suitable for through holes and blind holes.



Dimensions in mm

Article number	Internal thread A	External diameter E	Length B	Recommended retaining hole <sup>1)</sup> L +0,1	Minimum spacing W
890 000 040.112	M 4	7,7	6,9	7,2	2,4
890 000 050.112	M 5	7,7	6,9	7,2	2,4
890 000 060.112	M 6	10,3	9,5	9,6	3,0

<sup>1)</sup> Reference values only. Trials on the resp. materials are recommended.

### Example for finding the article number

Press-in threaded insert Mubux®-Z with internal thread A = M4 made of hardened, zinc plated and transparent thick film passivated steel: Mubux®-Z 890 000 040.112

### Material

Hardened steel, zinc plated, transparent thick film passivated

### Tolerances

ISO 2768-m

### Thread

Internal thread: ISO 6H