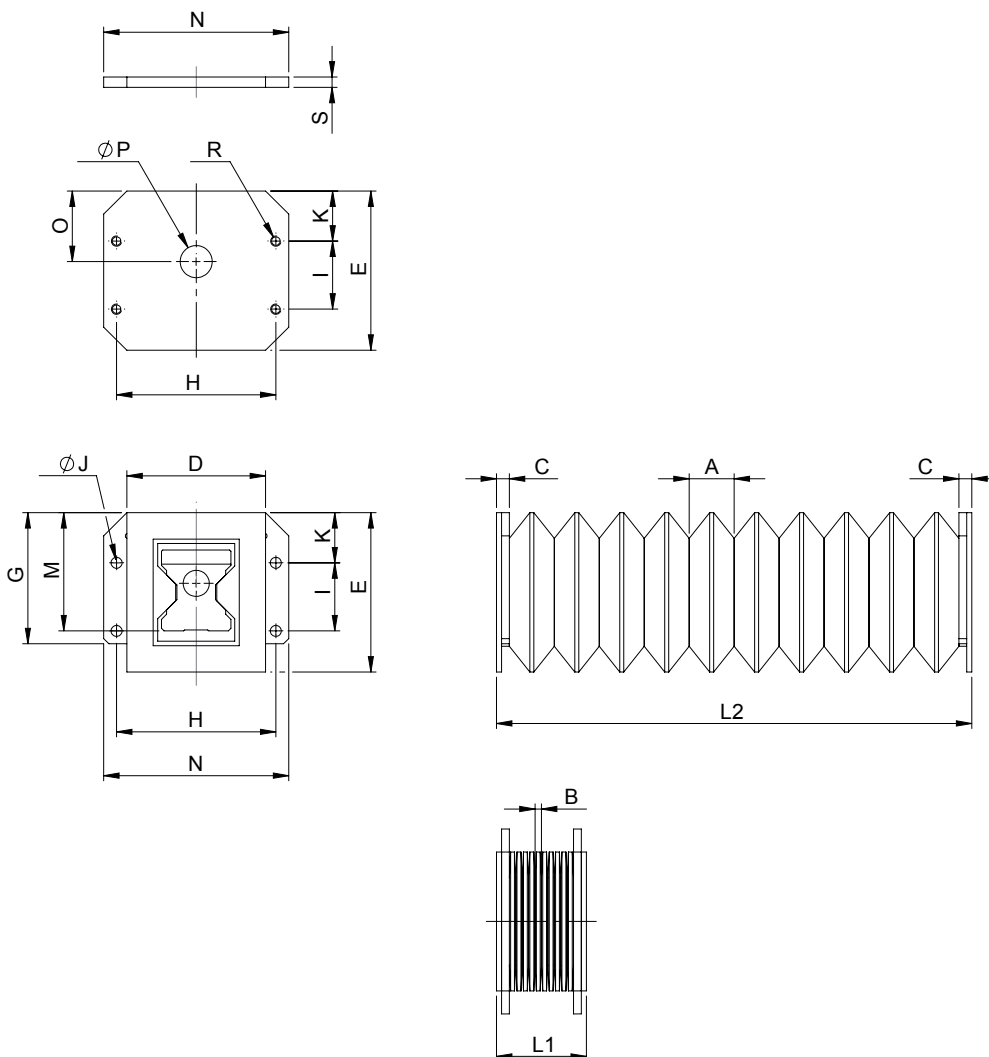
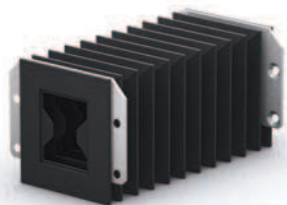


3.1.3.2 lifgo® gear rack protection & end plate • Dimension sheet

This gear rack protection is not suitable for use in welding areas. The end plate is used for mounting the gear rack protection on the lifgo® gear rack.



! Check whether the operating conditions require a gear rack protection.
 This gear rack protection is **not suitable for use in welding areas**.
 It is shipped with retaining plates and screws.

The gear rack protection is silicone-free.

Always add the number of folds "F = _ _ _" to the article number.

lifgo® gear rack protection		Unit	5.0	5.1	5.3
Stroke per fold	A	mm	17,5	17,5	27,5
	B	mm	2,5	2,5	2,5
	(A - B)	mm	15	15	25
	C	mm	5	5	5
	D	mm	50	54	92
Number of folds	E	mm	54	62	94
	F	each	as per customer data		
	G	mm	44,5	51	84
	H	mm	58	62	100
	I	mm	21	26,5	51,5
Stroke	J	mm	∅ 4,3 √8,5 x 90°	∅ 4,3 √8,5 x 90°	∅ 4,3 √8,5 x 90°
	K	mm	18,5	19,5	23,5
	L	mm	$L = L2 - L1 = F \times (A - B)$		
	L1	mm	$L1 = 2 \times C + F \times B$		
	L2	mm	$L2 = 2 \times C + F \times A$		
	M	mm	40	46	71,5
	N	mm	68	72	112
	O	mm	24	27,5	45
	P	mm	∅ 10,5	∅ 12,5	∅ 20,5
	R	mm	M4	M4	M4
S	mm	4	4	4	

Article number	5.0	5.1	5.3
lifgo® gear rack protection	500 121	500 122	500 123
lifgo® end plate	500 539	500 541	500 543